



**Pembroke Crescent  
Hove, BN3 5DE**

**FERMERS**



- 5 
- 3 
- 2 


**TENURE**  
Freehold

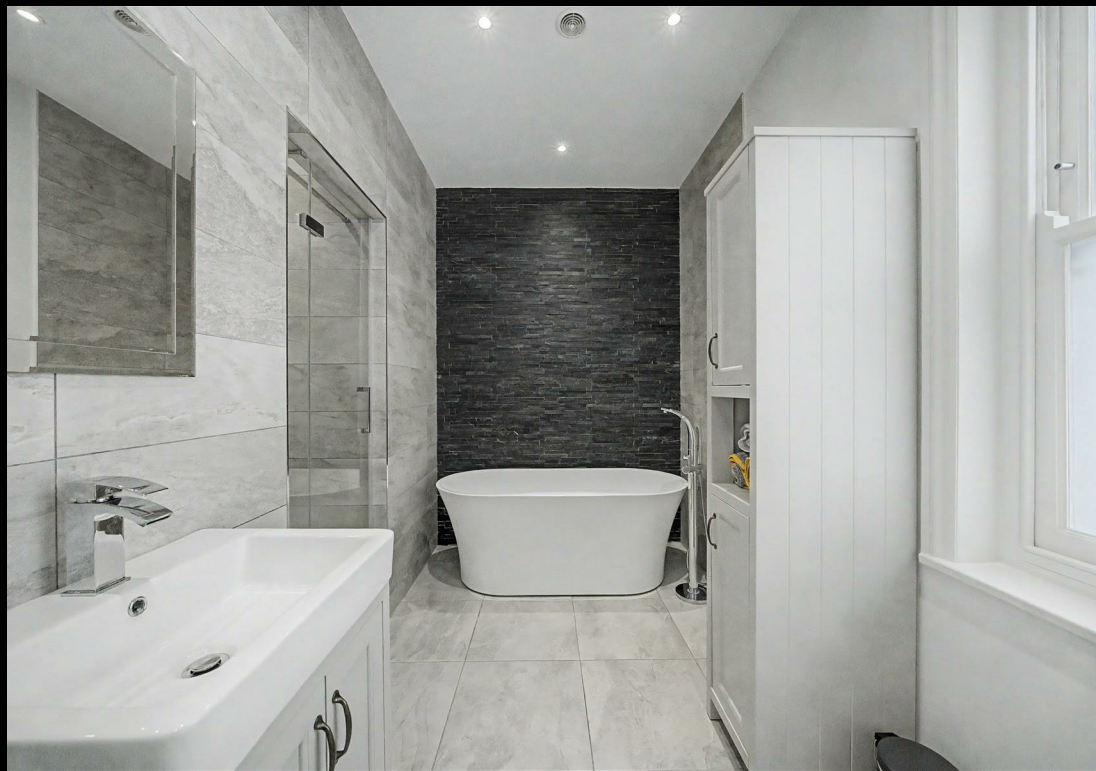
**EPC RATING**  
D

**COUNCIL TAX BAND**  
G



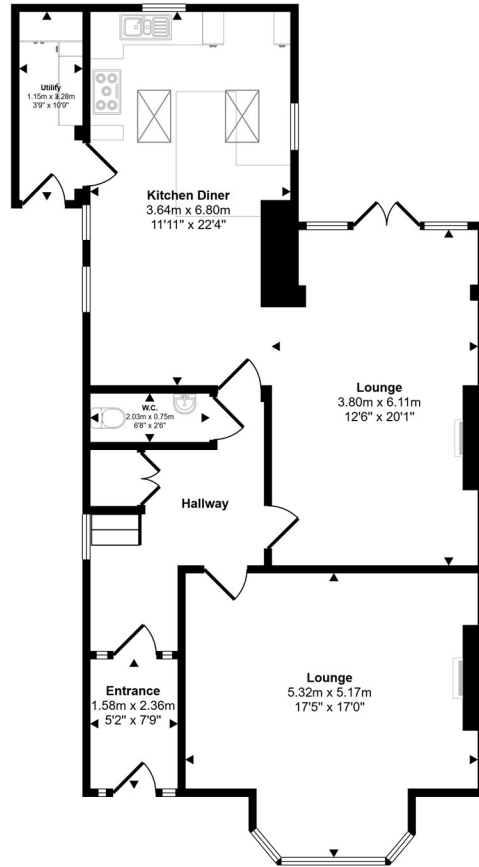
| Energy Efficiency Rating                    |           |           |
|---|-----------|-----------|
|   | Current   | Potential |
| Very energy efficient - lower running costs |           |           |
| (92 plus) <b>A</b>                          |           |           |
| (81-91) <b>B</b>                            |           | <b>81</b> |
| (69-80) <b>C</b>                            |           |           |
| (55-68) <b>D</b>                            | <b>68</b> |           |
| (39-54) <b>E</b>                            |           |           |
| (21-38) <b>F</b>                            |           |           |
| (1-20) <b>G</b>                             |           |           |
| Not energy efficient - higher running costs |           |           |

**England & Wales** EU Directive 2002/91/EC 

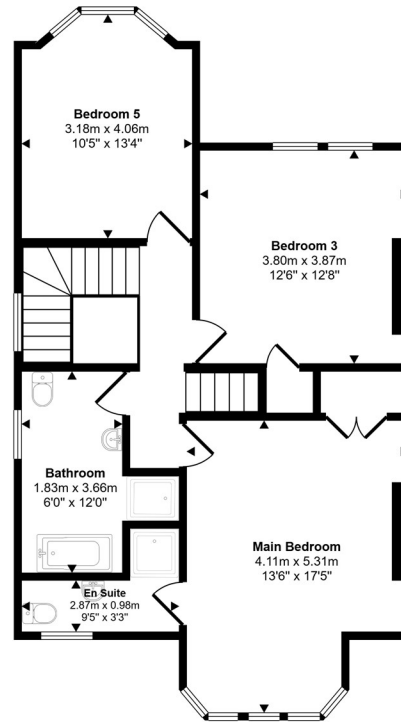


# Pembroke Crescent

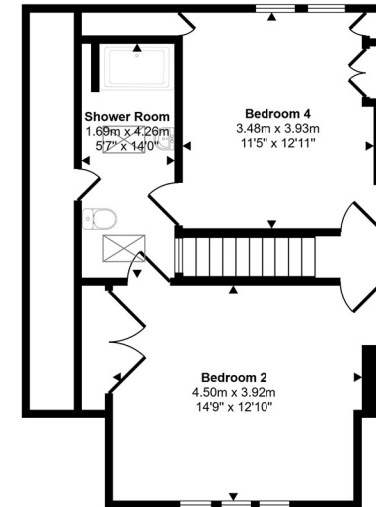
Approx Gross Internal Area  
220 sq m / 2368 sq ft



Ground Floor  
Approx 93 sq m / 997 sq ft



First Floor  
Approx 73 sq m / 790 sq ft



Second Floor  
Approx 54 sq m / 581 sq ft

This floorplan is only for illustrative purposes and is not to scale. Measurements of rooms, doors, windows, and any items are approximate and no responsibility is taken for any error, omission or mis-statement. Icons of items such as bathroom suites are representations only and may not look like the real items. Made with Made Snappy 360.

# FERMERS

## OFFICE ADDRESS

67 Queen Victoria Avenue  
Hove  
East Sussex  
BN3 6XA

## OFFICE DETAILS

01273 541 177  
sales@fermers.co.uk  
www.Fermers.co.uk

Agents Note: Whilst every care has been taken to prepare these particulars, they are for guidance purposes only. All measurements are approximate and are for general guidance purposes only and whilst every care has been taken to ensure their accuracy, they should not be relied upon and potential buyers/tenants are advised to recheck the measurements