



Flat 8, 39 Bramham Gardens, London | Earls Court | London | SW5 0JE

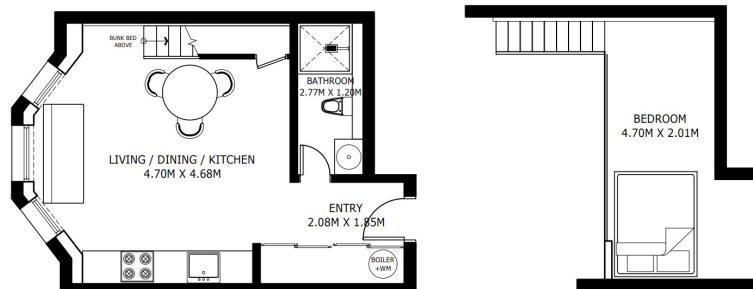
£2,700 Per Month

SÉJOUR

**Flat 8, 39 Bramham Gardens,
London | Earls Court
London | SW5 0JE**

Situated on the raised ground floor of a brand-new, high-specification development, this stunning loft-style studio apartment offers contemporary urban living in the heart of one of West London's most sought-after neighbourhoods.

- Beautifully refurbished studio apartment
- Bright open-plan living area
- Access to communal gardens
- Modern, well-equipped kitchen
- Contemporary bathroom
- Raised ground floor position



UNIT 8

GROSS INTERNAL AREA
48.10 SQ.M. / 517.74 SQ.FT.

*SIZES AND DIMENSIONS ARE APPROXIMATE, ACTUAL MAY VARY.

Energy Efficiency Rating		Current	Potential
Very energy efficient - lower running costs			
(92 plus)	A		
(81-91)	B		
(69-80)	C	80	86
(55-68)	D		
(39-54)	E		
(21-38)	F		
(1-20)	G		
Not energy efficient - higher running costs			
England & Wales		EU Directive 2002/91/EC	

**Council Tax Band C
EPC Rating C**

**10 Cromwell Pl
South Kensington
London
SW7 2JN**

**020 3865 0611
lettings@cityrelay.com**