

Parkheath

Sold on Service

Ariel Road NW6

£1,925 PCM (£444 per week) - Camden Band C



Well-presented one-bedroom flat

Neutral décor throughout

Separate modern fitted kitchen

Walking distance to West Hampstead & Kilburn transport links

First floor period conversion

Bright and spacious reception room

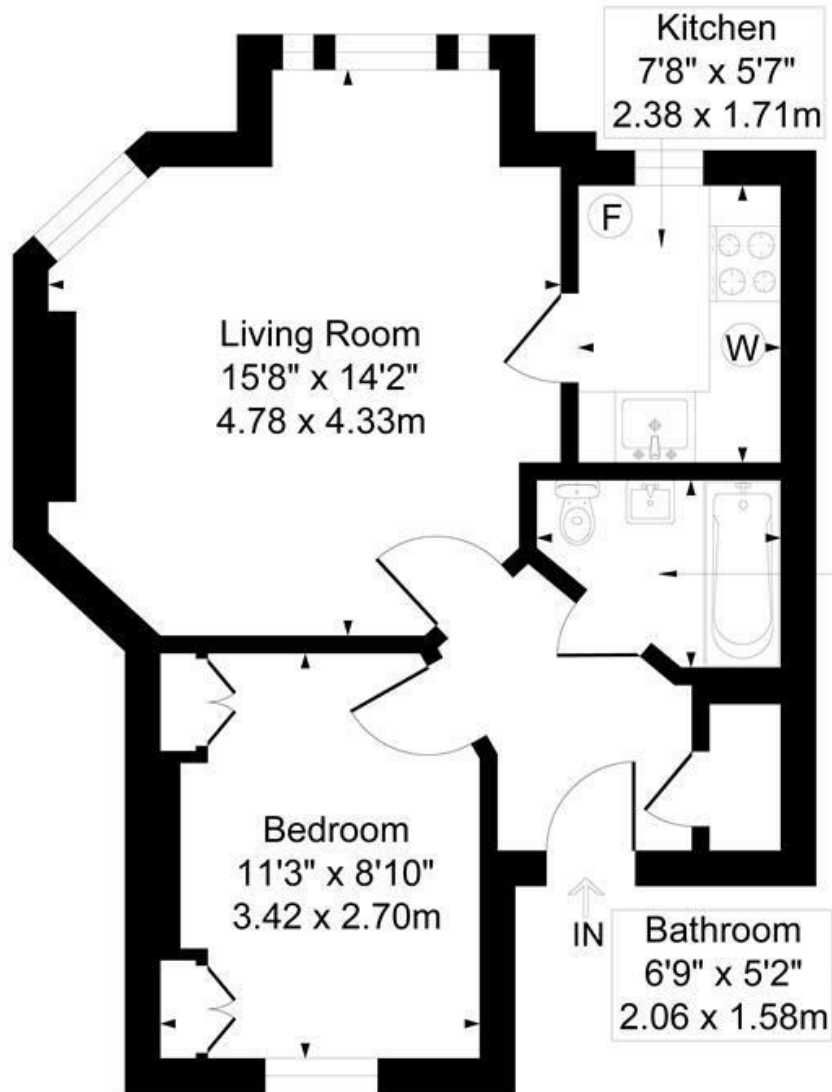
Contemporary bathroom/WC

EPC: Rating D, Council Tax: Camden band C

West Hampstead Office 020 7794 7111

Ariel Road

Approximate Gross Internal Area = 39 sq m / 422 sq ft



First Floor

Measured in accordance with RICS guidelines. Every attempt is made to ensure accuracy
However all measurements are approximate.
The Floor plan is illustrative purposes Only and is not to scale
ELLIE CLAIRE PHOTOGRAPHY LTD

The particulars do not constitute part of an offer or contract. The particulars, including text, photographs and plans, are for the guidance only of prospective purchasers/tenants and must not be relied upon as statements of fact. The descriptions provided therein represent the opinion of the author and whilst given in good faith should not be construed as statements of fact. Nothing in these particulars shall be deemed a statement that the property is in good condition or otherwise or that any services or facilities are in good working order. All measurements are approximate