



## Manchester Road, E14

**£403** Per week

A bright two bedroom apartment on the first floor of this residential development. This large apartment has been recently refurbished, open plan reception and is available furnished.

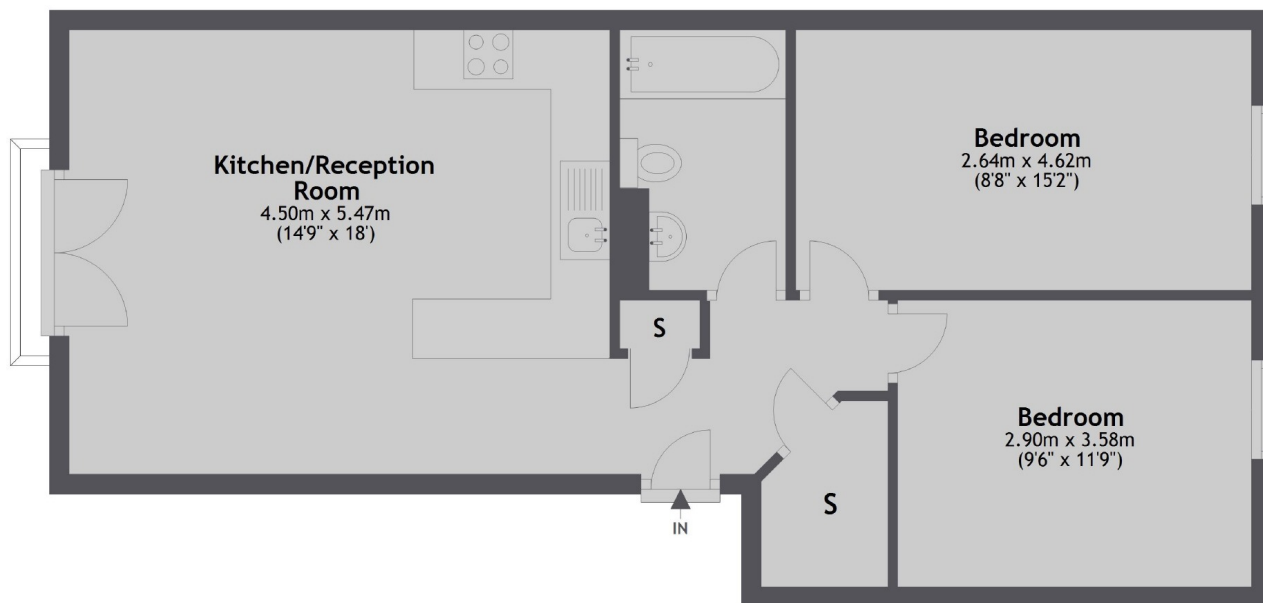
Verwood Lodge is within walking distance of Mudchute DLR providing direct links to Canary Wharf and City Airport.

### Features

- Two Bedrooms
- One Bathrooms
- Gated Development
- Newly Refurbished
- Great Location
- Ample Storage

# Manchester Road, London, E14

## First Floor



Main area: Approx. 59.5 sq. metres (640.9 sq. feet)  
Plus balconies, approx. 0.8 sq. metres (8.9 sq. feet)