



Quarrymans View, Worsley, M28

£1,460 Per Month

Welcome to Our Lady's, a stunning development offering a mix of 2, 3 & 4 bedroom homes exclusively for rent.

The welcoming central hallway of the Grantham sits in between the living room and the kitchen. A house designed with you in mind, the spacious lounge provides the perfect area to relax, whilst the dining/kitchen area provides a great place to spend time and entertain with its French windows opening on to the garden. A WC is conveniently situated off the hallway, completing the downstairs.

Upstairs, the house has a large master bedroom with fitted, mirrored wardrobes, and a further two bedrooms. A stylish family bathroom with a separate bath and shower provides the best of both worlds, whilst a storeroom on the landing provides a space to store bits and pieces.

Our Lady's development is well located; situated less than 1 mile from the A6, one of the main arterial routes into Manchester city centre. The site is also close to the A580 providing access to the motorway network including the M61, M60 and M62.

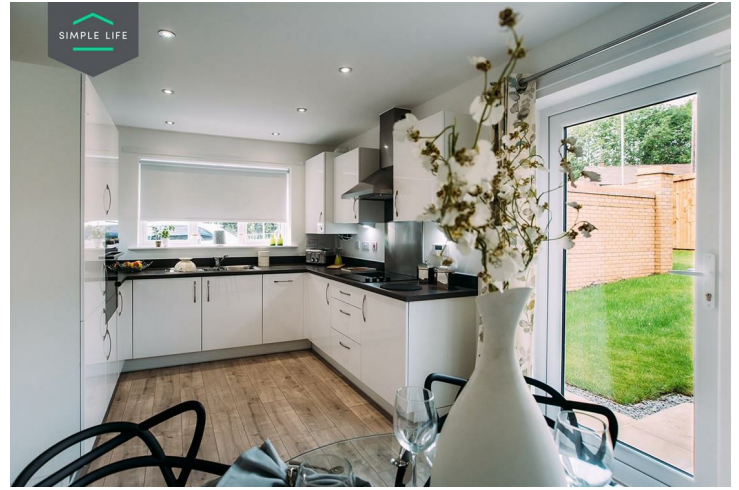
The towns of Worsley, Walkden, Bolton and Swinton are all nearby. The site is also approximately 1 mile away from Walkden train station which provides a regular service into Manchester city centre, with a travel time of just 15 minutes into Manchester Victoria station.

A large number of local primary schools are also located close to the development.

To visit this site, please use postcode M28 0HF in your satnav.

Deposit: £1680
Holding deposit: £330
Unfurnished
Council tax: B
Available 10th August 2026





Key Features

- Private driveway
- Fitted wardrobes to master bedroom
- Fridge freezer
- Oven and hob
- Dark ash style worktops
- Security alarm system
- Dishwasher
- Washing/drying machine
- Light wash wood effect flooring
- Modern, white kitchen units

Location

