



262 Mierscourt Road

Rainham, ME8 8JW

£280,000



An immaculately presented 2 bedroom terrace house boasting a modern and contemporary ambiance throughout. Downstairs comprises of a welcoming porch, good sized lounge with a modernised staircase for ease of use and a stylish kitchen/diner with solid wood worktops. Upstairs provides 2 double bedrooms with fitted wardrobes and a neutral bathroom. The rear garden is an ample size with a patio for entertaining and rear access for convenience. A garage en bloc and parking alongside is located closeby. A popular farm shop is a short walk away with Rainham Station and shops just over a mile in distance. Motorway links can easily be reached in minutes by car. Numerous local schools, both primary and secondary are within easy reach. Must be viewed!



Door To

Porch

5'4 x 4'3 (1.63m x 1.30m)

Lounge

15'2 x 13'0 (4.62m x 3.96m)

Kitchen

12'9 x 9'7 (3.89m x 2.92m)

Stairs To Landing

Bedroom 1

10'8 x 9'7 (3.25m x 2.92m)

Bedroom 2

10'7 x 8'3 (3.23m x 2.51m)

Garden Approx.

30'0 (9.14m)

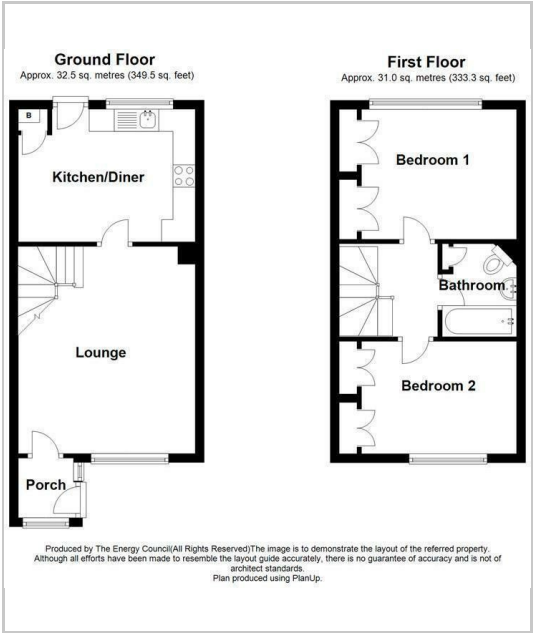
Garage en bloc

Important Notice -

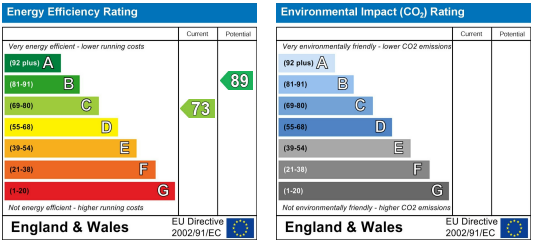
Area Map



Floor Plans



Energy Efficiency Graph



These particulars, whilst believed to be accurate are set out as a general outline only for guidance and do not constitute any part of an offer or contract. Intending purchasers should not rely on them as statements of representation of fact, but must satisfy themselves by inspection or otherwise as to their accuracy. No person in this firms employment has the authority to make or give any representation or warranty in respect of the property.