



**Bramley Court, Marden, Tonbridge, TN12 9QN**  
**Price £215,000**

**\*\*\*NO FORWARD CHAIN\*\*\*BEAUTIFULLY RENOVATED TWO-BEDROOM RETIREMENT BUNGALOW IN THE HEART OF MARDEN**

This superb two-bedroom bungalow has been tastefully renovated and is ideally located within easy walking distance of Marden's village amenities, including a convenience store, post office, and cafe. Marden train station is also close by, offering frequent direct mainline services to London.

The accommodation comprises an entrance hall, a bright lounge/dining room with doors opening on the garden, a fitted kitchen, two well-proportioned bedrooms and a modern shower room. Outside, there is a private rear patio, a useful external storage cupboard, and attractive gardens and residents' parking. Residents also benefit from a communal lounge, laundry room, and the reassurance of an on-House Manager.

With its excellent presentation and peaceful setting, this property is ideal for those seeking a low-maintenance lifestyle within a welcoming village community. Early viewing is strongly advised—contact Page & Wells Loose Office today to arrange your appointment.



Lounge/Dining Room 17'10" x 14'7" (5.45m x 4.45m)


Kitchen 10'11" x 8'0" (3.35m x 2.45m)

Bedroom 1 13'5" x 11'3" (4.10m x 3.43m)

Bedroom 2 8'11" x 8'2" (2.72m x 2.49m)

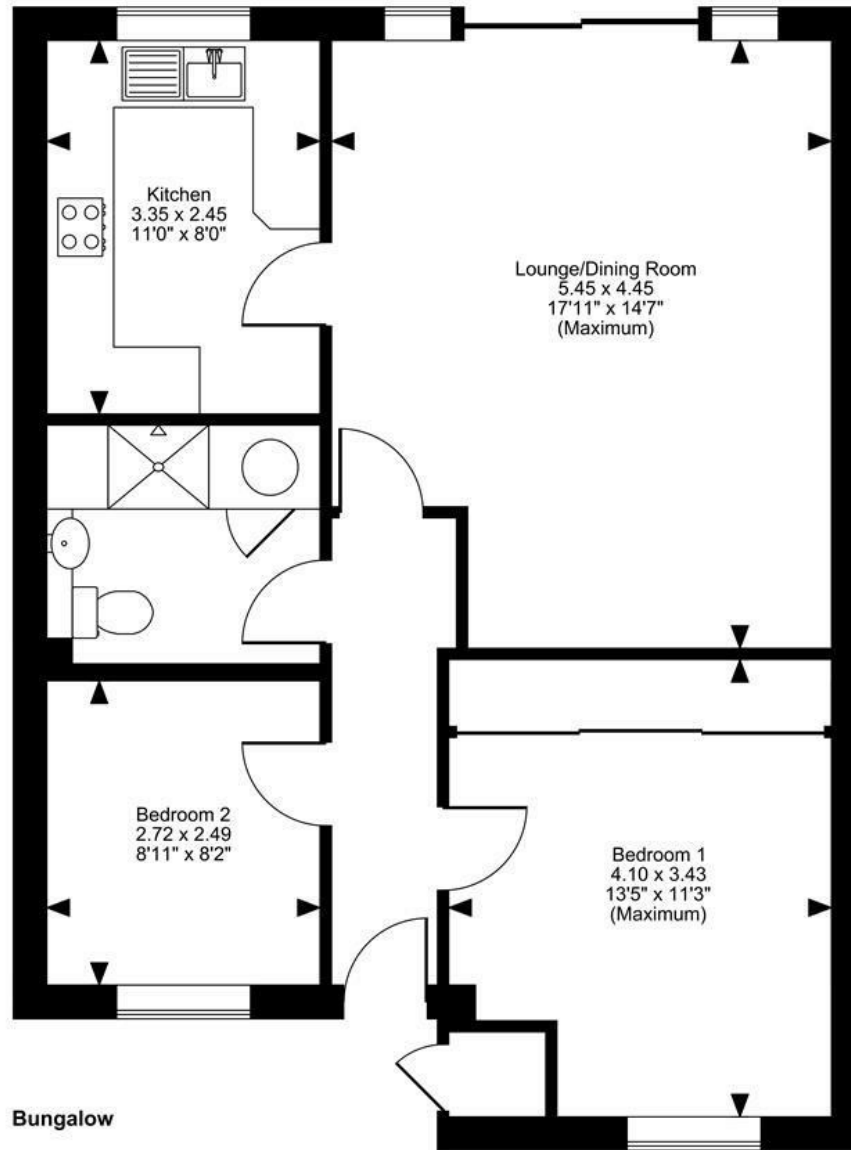
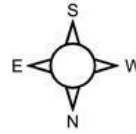
Bathroom

### Energy Efficiency Rating

	Current	Potential
<i>Very energy efficient - lower running costs</i>		
(92 plus) <b>A</b>		
(81-91) <b>B</b>		<b>87</b>
(69-80) <b>C</b>		
(55-68) <b>D</b>	<b>60</b>	
(39-54) <b>E</b>		
(21-38) <b>F</b>		
(1-20) <b>G</b>		
<i>Not energy efficient - higher running costs</i>		
<b>England &amp; Wales</b>	EU Directive 2002/91/EC	

Page & Wells limited for themselves and for the vendors of this property whose agents they are give notice that: 1. These particulars do not constitute any part of, an offer or a contract. 2. All statements contained in these particulars as to this property are made without responsibility on the part of Page & Wells Limited or the Vendor. 3. None of the statements contained in these particulars as to the property is to be relied on as statements or representations of fact. 4. Any intending purchaser must satisfy himself by inspection or otherwise as to the correctness of each of the statements contained in these particulars. 5. The vendor does not make or give, and neither Page & Wells Limited nor any person in their employment has any authority to make or give any representation whatsoever in relation to this property. These particulars are supplied on the understanding that all negotiations are carried out throughout Page & Wells Limited. Properties with a reference prefixes EAA are those which Page & Wells Limited disclose an interest in accordance with the provisions of the Estates Agents Act 1979

**Bramley Court, Marden, Tonbridge**  
Approximate Gross Internal Area  
**675 Sq Ft/63 Sq M**  
Quoted Area Excludes 'External C/B'



**FOR ILLUSTRATIVE PURPOSES ONLY - NOT TO SCALE**

The position & size of doors, windows, appliances and other features are approximate only.

© ehouse. Unauthorised reproduction prohibited. Drawing ref. dig/8670813/LCO

