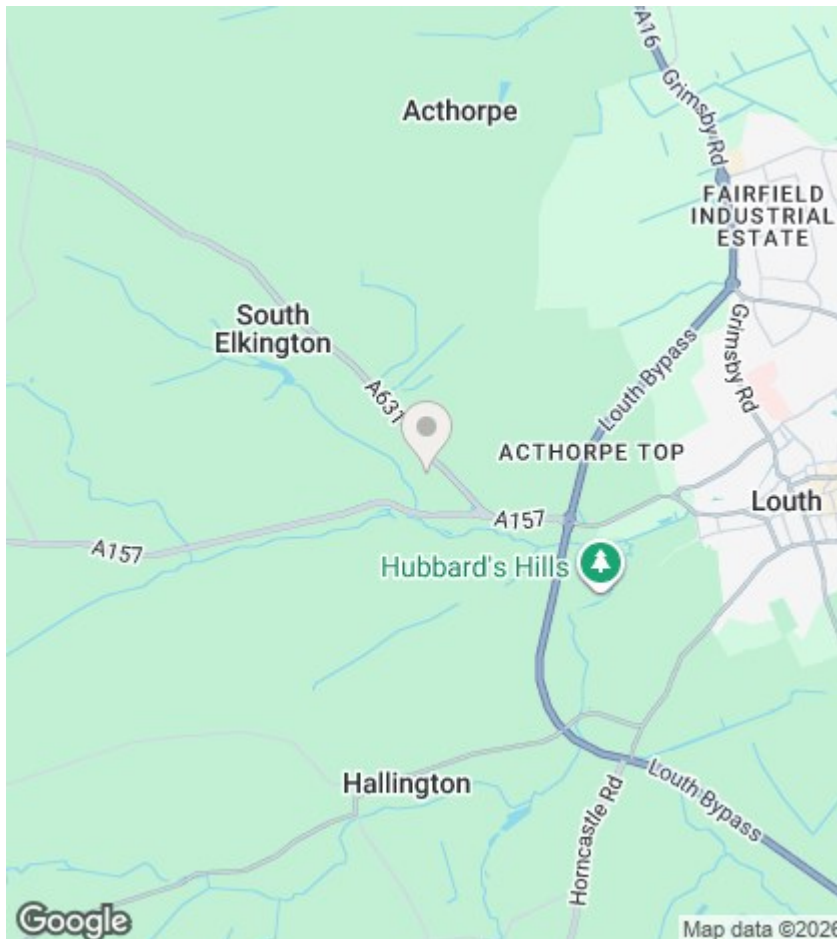




Four Trees Main Road, South Elkington, Louth, LN11 0RU

£1,750 PCM

- Large countryside property
- Uninterrupted views of the open countryside
- Triple garage
- Standard, Superfast and Ultrafast broadband speeds available here.
- Four bedrooms main with en-suite
- Water rates included in rent
- GCH, Mains Drainage, FTTC



Directions

Viewings

Viewings by arrangement only. Call 01507 605 721 to make an appointment.

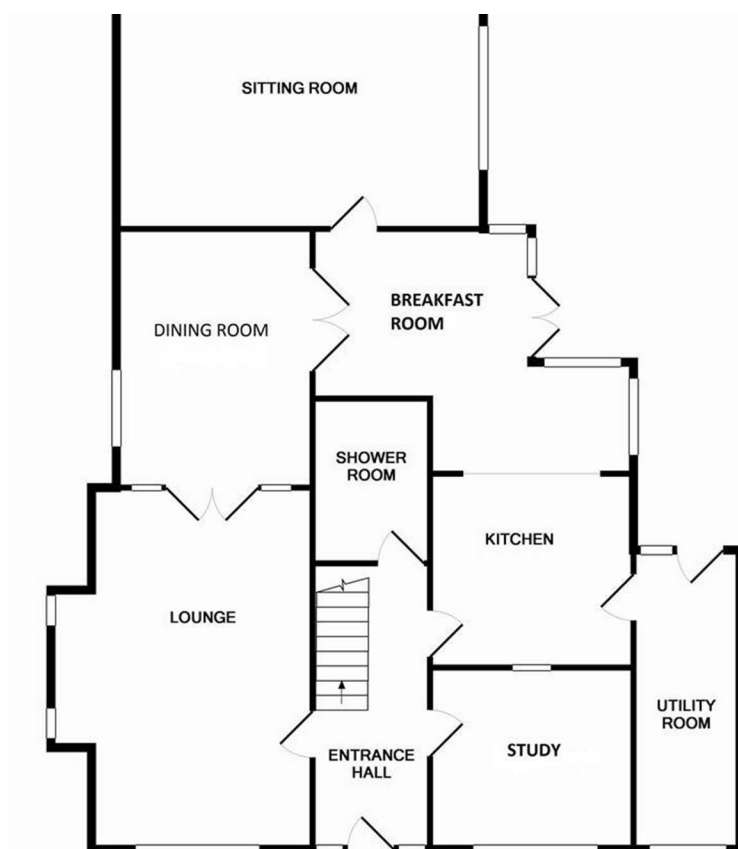
Council Tax Band:

F

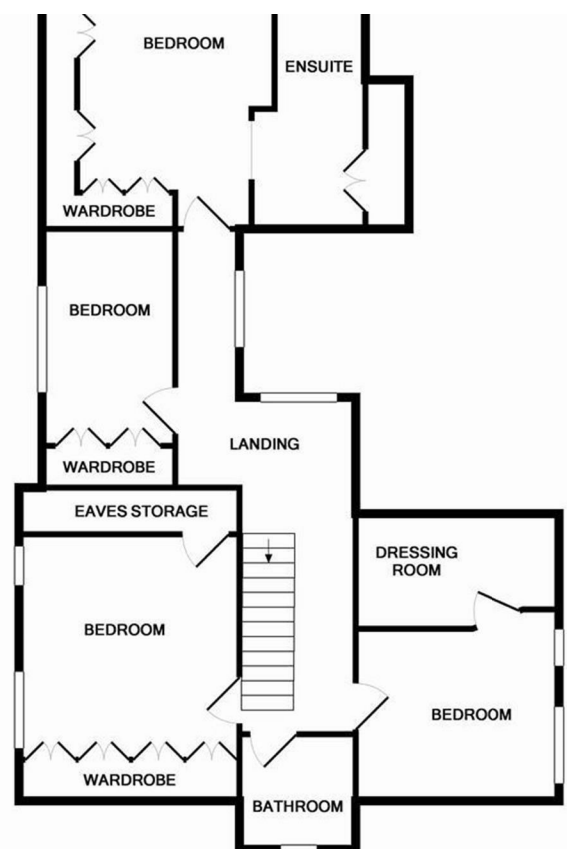
EPC Rating:

C

Energy Efficiency Rating		
	Current	Potential
Very energy efficient - lower running costs		
(92 plus) A		
(81-91) B		
(69-80) C	70	78
(55-68) D		
(39-54) E		
(21-38) F		
(1-20) G		
Not energy efficient - higher running costs		
England & Wales		
EU Directive 2002/91/EC		



GROUND FLOOR



1ST FLOOR