



2 Bridgend Place

Whitburn EH47 8LA

Offers Over £147,000

Caesar & Howie

Solicitors & Estate Agents



2 Bridgend Place

Whitburn EH47 8LA

An excellent first time buy is offered from this well presented and popular style terraced villa, located in a central position. It is ideally placed for schools and amenities. Bright lounge/diner with picture window to front and access to modern conservatory at the rear. The kitchen has a wide range of modern units and both bedrooms are generous in size and have excellent storage facilities. Sizable low maintenance garden to rear, with shed and sunny position. Well placed for town centre, public transport and most amenities.

- Entrance hall/storage
- Lounge/dining room
- Fitted kitchen
- Conservatory
- Two double bedrooms
- Shower room
- GCH & DG
- Solar panels (front elevation)
- Gardens
- On street parking
- Floor area: 69 m2

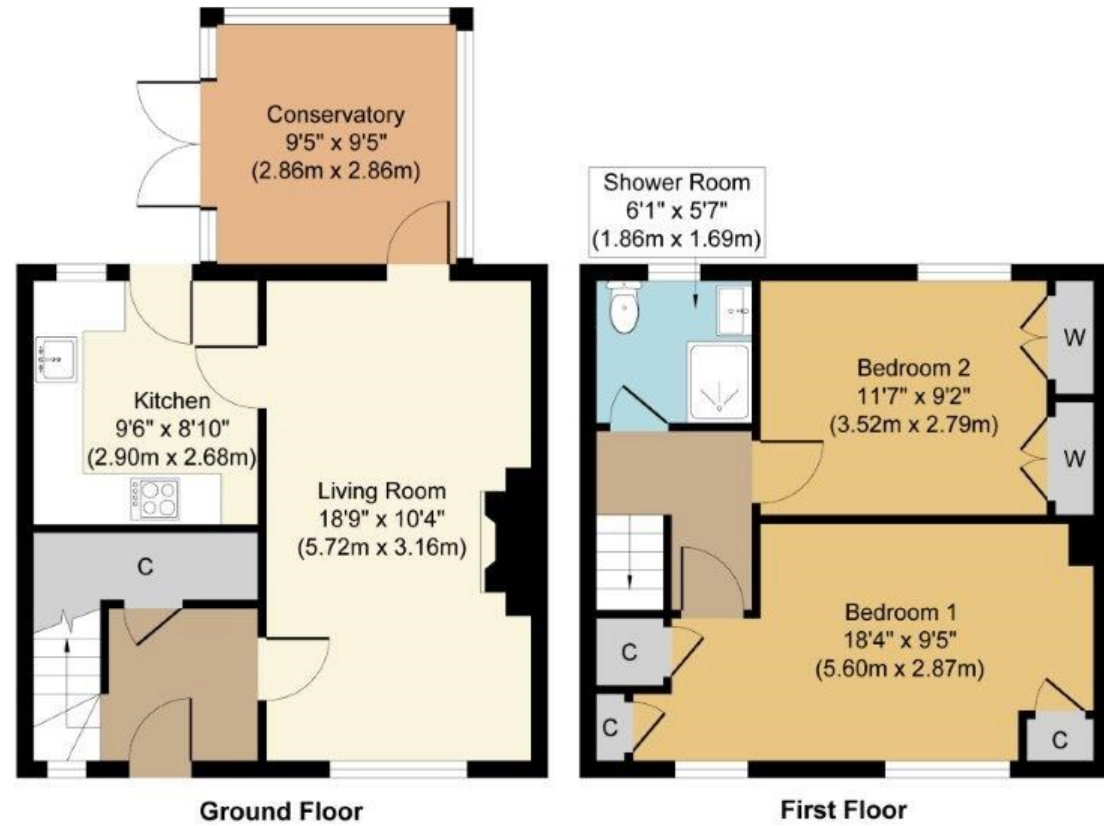


Viewings: Strictly by appointment through Caesar & Howie on 01506 435306 or email property@caesar-howie.co.uk



2 Bridgend Place

2 Bridgend Place



Whilst every attempt has been made to ensure the accuracy of the floor plan contained here, measurements of doors, windows, rooms and any other items are approximate and no responsibility is taken for any error, omission, or mis-statement. The measurements should not be relied upon for valuation, transaction and/or funding purposes. This plan is for illustrative purposes only and should be used as such by any prospective purchaser or tenant. The services, systems and appliances shown have not been tested and no guarantee as to their operability or efficiency can be given.

Copyright V360 Ltd 2026 | www.houseviz.com