



Tollington Park, N4

£2,200 Per week

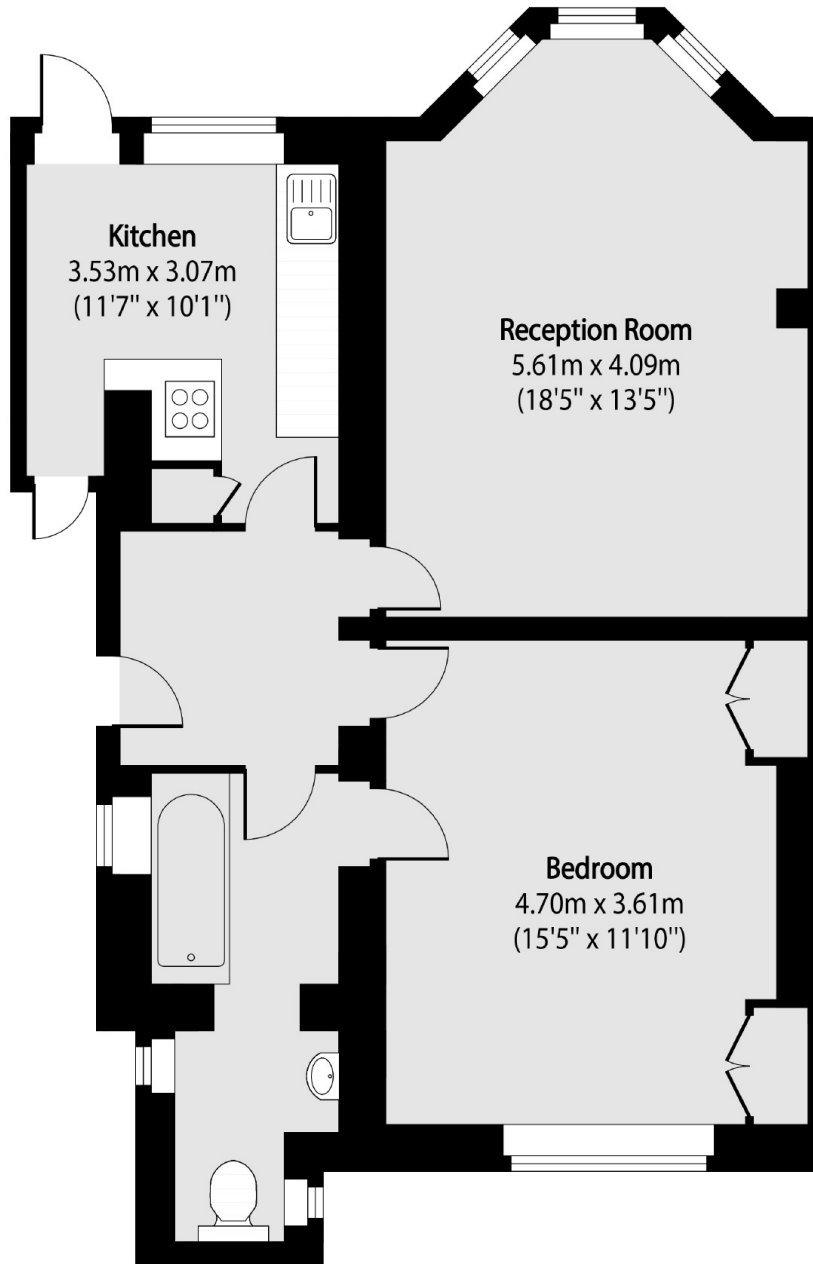
A larger than average one bedroom flat on Tollington Park. Measuring in excess of 700 sq ft, the flat has a spacious reception, doubled bedroom with fitted storage and separate kitchen leading to garden.

Located on Tollington Park and within easy reach of the local shops and cafes on both Stroud Green and Hornsey Road. Finsbury Park underground station is a short distance away for access to Victoria, Piccadilly and mainline services.

Features

- One Bedroom Flat
- In Excess of 700sq Ft
- High Ceilings
- Garden
- Great Location
- Close To Finsbury Park Station

Tollington Park, London, N4



Total area (approx): 68.28 sq m (735 sq. ft)