



Timber Lane, Woburn, Milton Keynes

£380,000



Timber Lane, Woburn, Milton Keynes

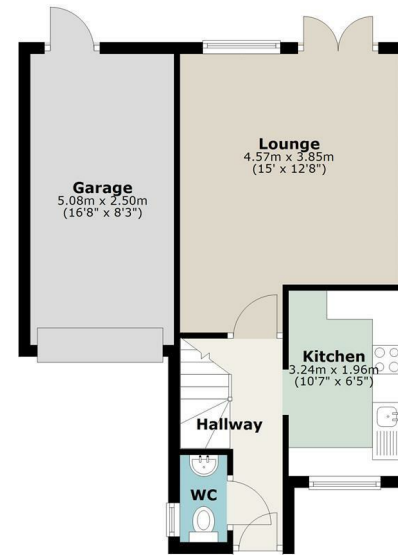
- NO UPPER CHAIN
- Rarely Available Woburn Location
- Driveway Parking and Garage
- Short Stroll to Woburn High Street
- Cul-De-Sac Position Neatly Tucked Away
- Close to Woburn Deer Park & Safari Park
- Brand New Decking Installed 2025
- Overlooking Greenery & Fields To Front
- Three Double Bedrooms
- Downstairs Cloakroom



Floor Plan



Ground Floor



First Floor



Total area: approx. 83.5 sq. metres (898.6 sq. feet)

This floorplan is for illustrative purposes only. Room sizes and layout are approximate and should not be relied upon as exact. Buyers should verify measurements and details independently before making any decisions.
Plan produced using PlanUp.

Viewing

Please contact our Leighton Buzzard Office on 01525 377733.

If you wish to arrange a viewing appointment for this property or require further information.

IMPORTANT: Whilst we aim to make our details accurate and reliable, if there is any point of particular concern to you, please contact the office. The apparatus, equipment, fittings and services have not been checked and therefore it is in the purchaser's interest to establish the working condition of the appliance included. Personal items such as furnishings which may be shown in the photographs are not included in the asking price. No survey has been carried out by M & M Properties. Measurements have a tolerance of +/- 3". Please note that this floorplan has not been drawn to scale and is therefore for room layout purposes only. It does not constitute or form part of a contract. Doors may be hung in opposite directions.

27/29 Hockliffe Street, Leighton Buzzard - LU7 1EZ

Sales: 01525 377733 - Lettings: 01525 371997

sales@mandmproperties.co.uk - lettings@mandmproperties.co.uk

LOCAL PEOPLE WORKING FOR YOU