



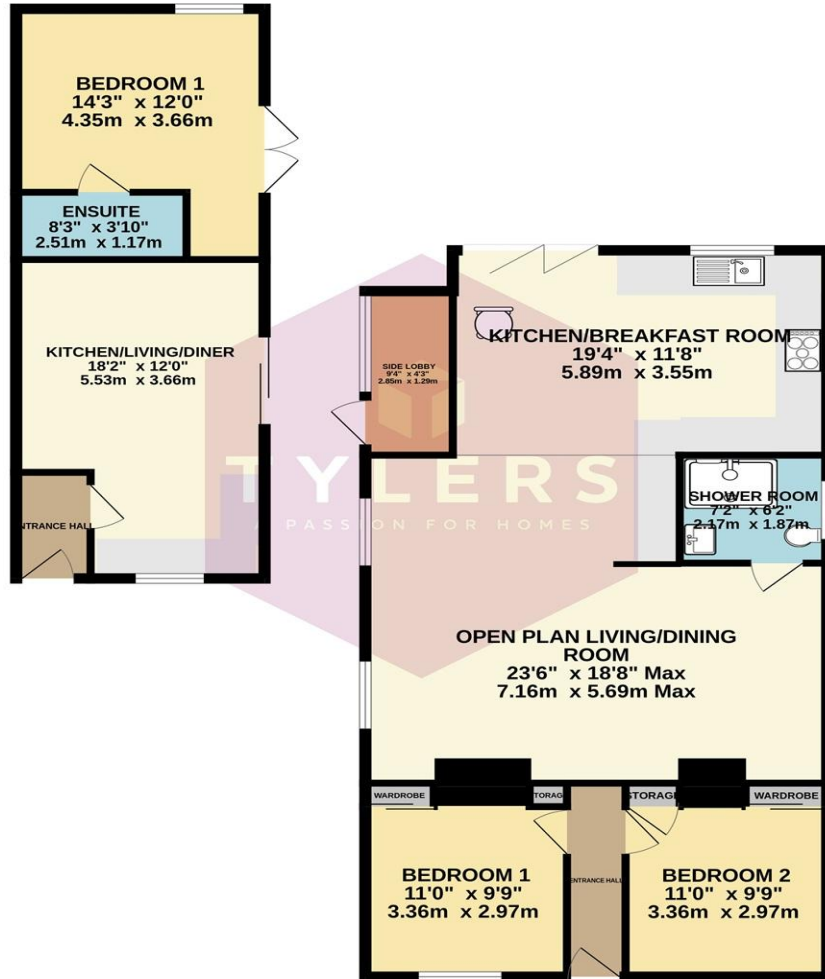
**Ditton Walk, Cambridge, CB5 8QD**

## welcome to Ditton Walk, Cambridge

An exceptionally well-presented detached bungalow extended and modernised in recent years to create a comfortable and contemporary home. The property further benefits from a self-contained one-bedroom annexe, ideal for a dependent relative or offering potential for additional income.



GROUND FLOOR  
1282 sq.ft. (119.1 sq.m.) approx.



**Accommodation -**

**Entrance Hall**

**Bedroom 1**

**Bedroom 2**

**Open Plan Living/Dining Area**

**Kitchen/Breakfast**

**Side Lobby**

**Shower Room**

**Outside**

**Detached Self-Contained Annex**

**Entrance Lobby**

**Open Plan Kitchen/Living/Diner**

**Double Bedroom**

**En-Suite Shower Room**

## welcome to Ditton Walk, Cambridge

- Detached Bungalow
- Two Bedrooms
- Shower Room
- Large Open Plan Kitchen/Living/Diner
- Detached One Bedroom Self-contained Annex

Tenure: Freehold EPC Rating: Awaiting

Council Tax Band: D

# £600,000



Please note the marker reflects the postcode not the actual property

**view this property online** [sequencehome.co.uk/Property/CBE100046](https://www.sequencehome.co.uk/Property/CBE100046)



Property Ref:  
CBE100046 - 0002

1. MONEY LAUNDERING REGULATIONS Intending purchasers will be asked to produce identification documentation at a later stage and we would ask for your co-operation in order that there is no delay in agreeing the sale. 2. These particulars do not constitute part or all of an offer or contract. 3. The measurements indicated are supplied for guidance only and as such must be considered incorrect. Potential buyers are advised to recheck measurements before committing to any expense. 4. We have not tested any apparatus, equipment, fixtures or services and it is in the buyers interest to check the working condition of any appliances. 5. Where an EPC, or a Home Report (Scotland only) is held for this property, it is available for inspection at the branch by appointment. If you require a printed version of a Home Report, you will need to pay a reasonable production charge reflecting printing and other costs. 6. We are not able to offer an opinion either written or verbal on the content of these reports and this must be obtained from your legal representative. 7. Whilst we take care in preparing these reports, a buyer should ensure that his/her legal representative confirms as soon as possible all matters relating to title including the extent and boundaries of the property and other important matters before exchange of contracts.



**01223 214400**



[cambridge@tylers.net](mailto:cambridge@tylers.net)



104 Cherry Hinton Road, CAMBRIDGE,  
Cambridgeshire, CB1 7AJ



[sequencehome.co.uk](https://www.sequencehome.co.uk)