

Greenfield Gardens, NW2

£500,000

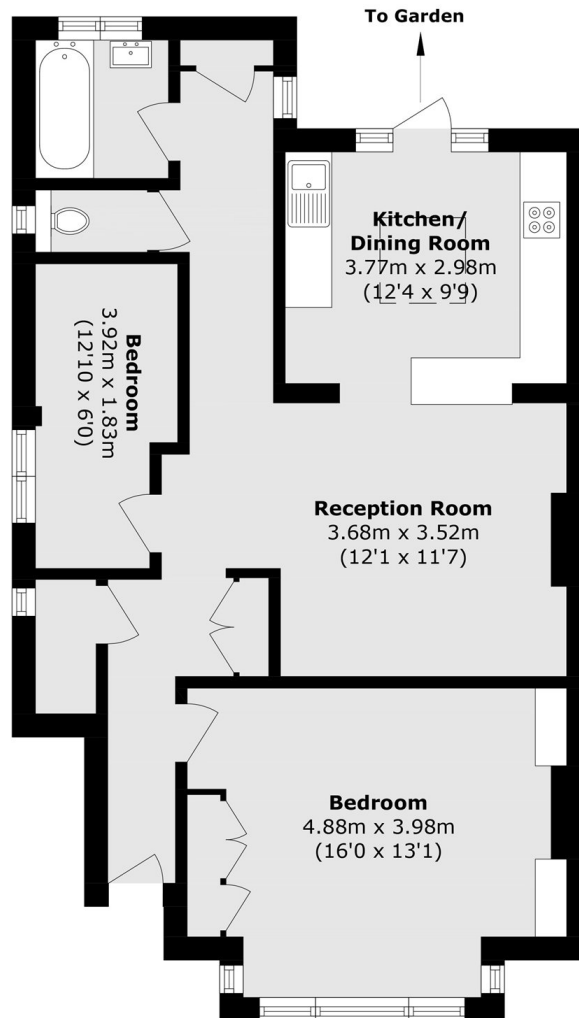
A beautifully presented two bedroom ground floor garden flat offering the benefit of a private entrance. In ready to move condition, the property features a private garden, a lease in excess of 950 years, no service charge or ground and is being offered chain free.

Greenfield Gardens is a residential tree lined road offering fantastic transport links and amenities due to its proximity to Golders Green and Hampstead. Cricklewood station (Thameslink), Golders Green station (Northern Line) and Hampstead Heath are all within a mile of the property.

Features

Ground Floor Garden Flat
Two Bedrooms
Private Entrance
Ready To Move Condition
Lease In Excess Of 950 Years
Chain Free

Greenfield Gardens, London, NW2



Total area (approx.): 72.4 sq. m (779.3 sq. ft)