



3 Lawson Grove, Watford
£900,000





3 Lawson Grove

Watford, Watford

BEAUTIFULLY PRESENTED, THIS SUPERB LOFT AND REAR-EXTENDED DETACHED BUNGALOW HAS UNDERGONE A SUBSTANTIAL PROGRAMME OF IMPROVEMENTS, RESULTING IN A CONTEMPORARY HOME OFFERING GENEROUS SPACE, HIGH-QUALITY FINISHES, AND A QUIET POSITION WITHIN THIS SOUGHT-AFTER RESIDENTIAL CLOSE.

STUNNING MODERN KITCHEN

17'1 BEDROOM WITH EN-SUITE

18,18 BEDROOM 2 WITH EN-SUITE WET ROOM

13'1 X 12'2 DINING ROOM

UPVC DOUBLE GLAZING AND GAS CENTRAL HEATING

FITTED WARDROBES

LOW MAINTENANCE GARDEN

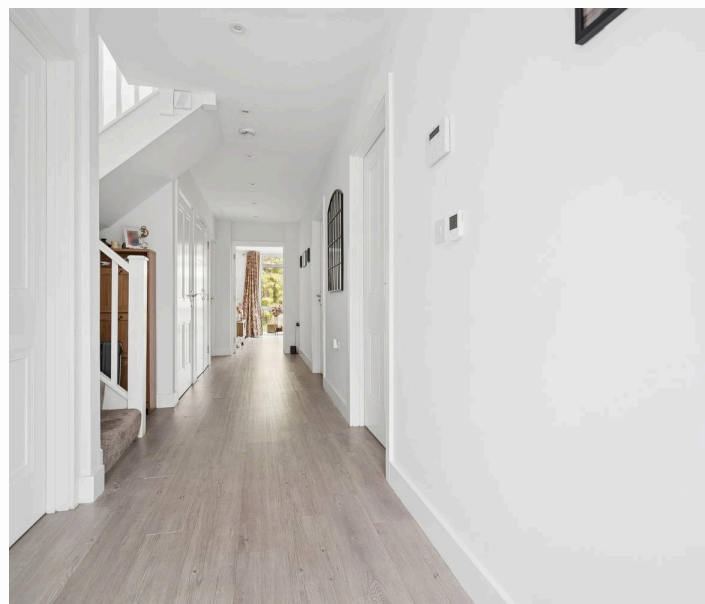
GARAGE OWN DRIVE

Council Tax band: E

Tenure: Freehold

EPC Energy Efficiency Rating: D

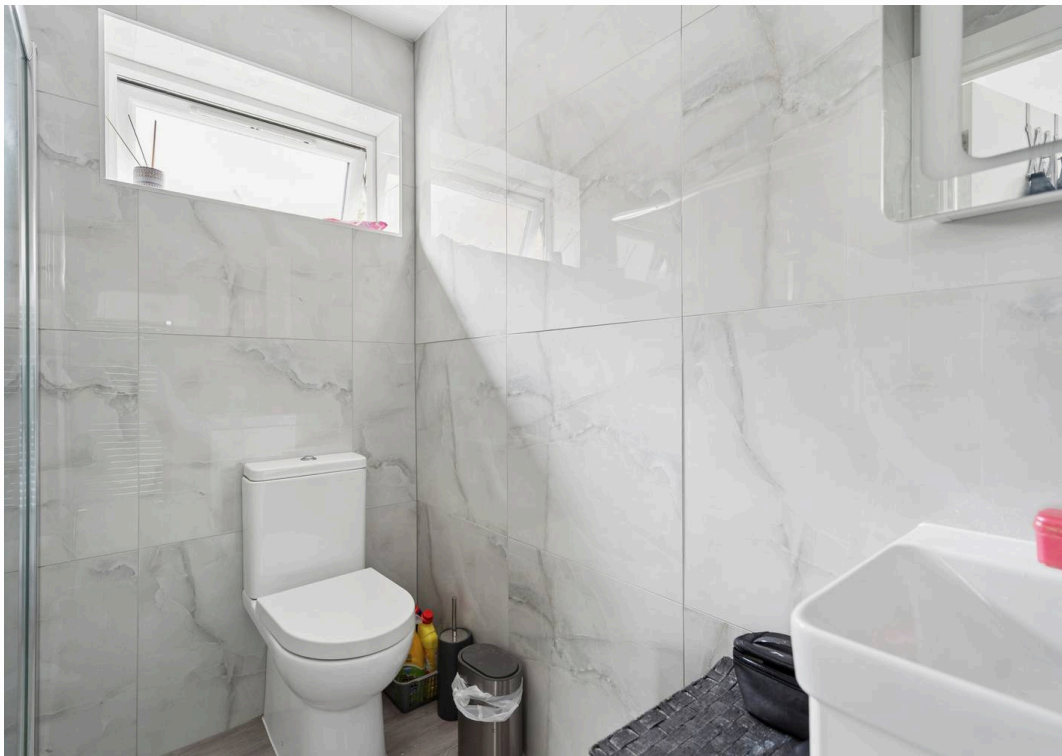
EPC Environmental Impact Rating: D





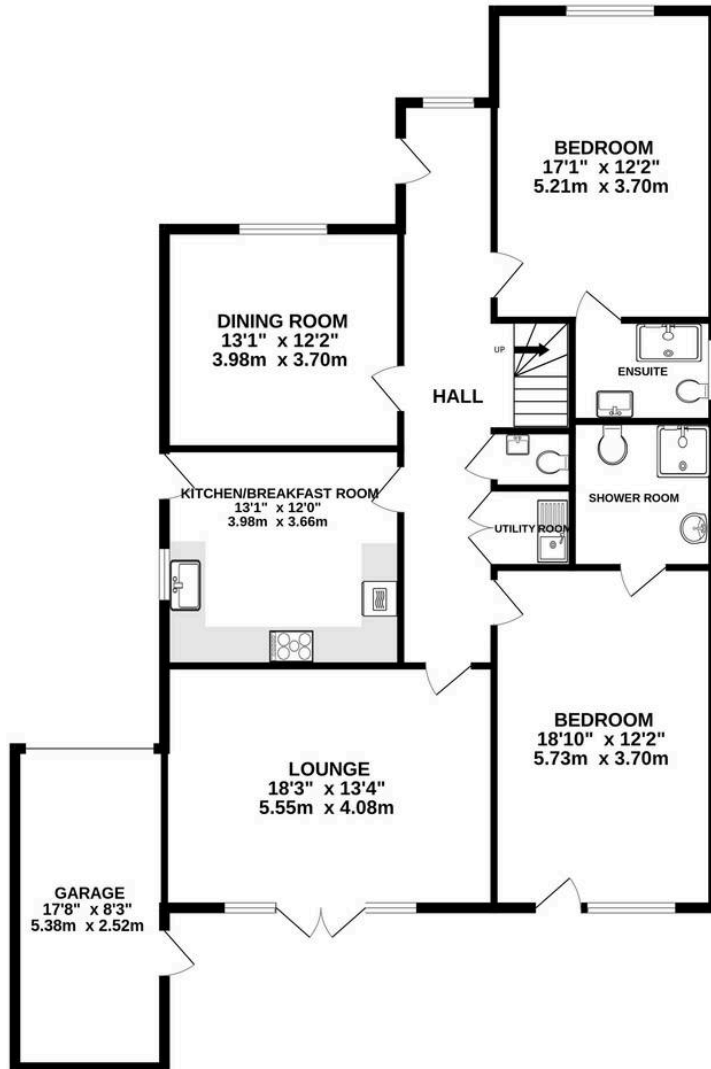




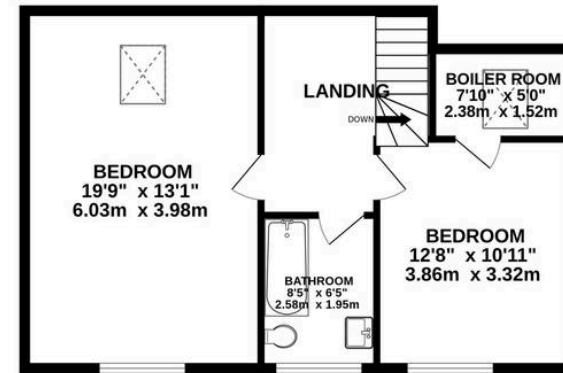




GROUND FLOOR
1467 sq.ft. (136.3 sq.m.) approx.



1ST FLOOR
584 sq.ft. (54.2 sq.m.) approx.



TOTAL FLOOR AREA : 2050 sq.ft. (190.5 sq.m.) approx.

Whilst every attempt has been made to ensure the accuracy of the floorplan contained here, measurements of doors, windows, rooms and any other items are approximate and no responsibility is taken for any error, omission or mis-statement. This plan is for illustrative purposes only and should be used as such by any prospective purchaser. The services, systems and appliances shown have not been tested and no guarantee as to their operability or efficiency can be given.
Made with Metropix ©2026





Fairfield – Oxhey

1 Station Approach, Watford – WD19 7DT

020 8428 0540 • rob@fairfieldstates.co.uk • fairfieldstates.co.uk/

We have prepared these particulars as a general guide of the property and they are not intended to constitute part of an offer or contract. We have not carried out a detailed survey of the property and we have not tested any apparatus, fixtures, fittings, or services. All measurements and floorplans are approximate, and photographs are for guidance only. These should not be relied upon for the purchase of carpets or any other fixtures or fittings. Lease details, service