



Bow Green

, E3

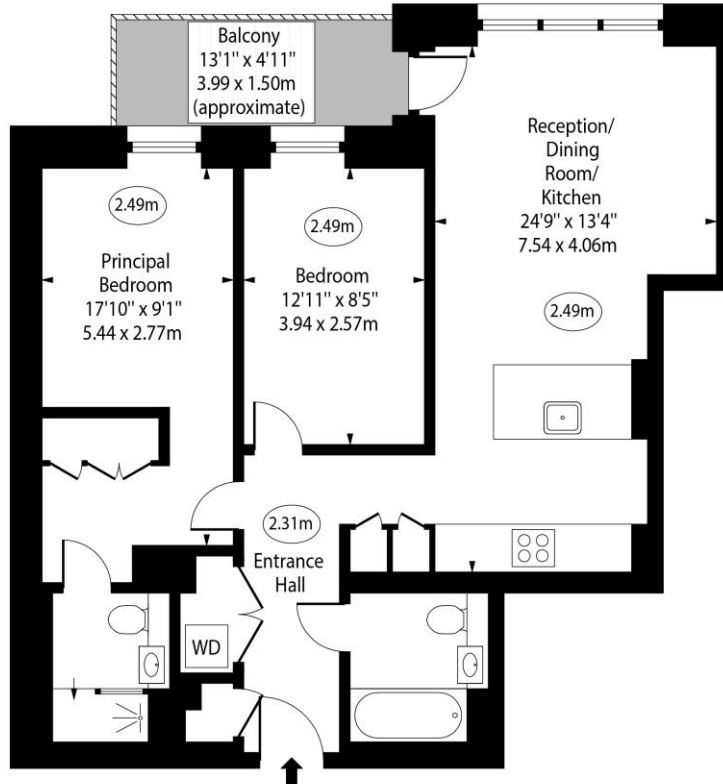
£3,400 per month
(£784.62 per week)

A bright, contemporary two-bedroom apartment featuring an open-plan living/kitchen area, private balcony, two double bedrooms, and a stylish bathroom. Set within a well-maintained development close to local amenities and transport links.

CHESTERTONS

Bow Common,
Bow Green, E3

○ - Ceiling Height



Fourth Floor

Approx Gross Internal Area 817 Sq Ft - 75.90 Sq M

Every attempt has been made to ensure the accuracy of the floor plan shown. However, all measurements, fixtures, fittings, and data shown are approximate interpretations and for illustrative purposes only. Measured according to the RICS. Not To Scale.
www.goldlens.co.uk
Ref. No. 031464.1M

Minimum Term:
Deposit Required:
Local Authority:
Council Tax Band:
EPC Rating: B

Score	Energy rating	Current	Potential
92+	A		
81-91	B	85 B	85 B
69-80	C		
55-68	D		
39-54	E		
21-38	F		
1-20	G		

Chestertons Canary Wharf & Greenwich Lettings

Harbour Island
28 Harbour Exchange Square
Canary Wharf & Docklands
London
E14 9GE
canarywharflettingsusers@chestertons.co.uk

Additional tenant charges apply (fees apply to non-AST tenancies only)
Tenancy Agreement Fee: £300
References per Tenant/Guarantor: £60
Inventory check (approx. £100 – £250 inc. VAT)
chestertons.co.uk/property-to-rent/applicable-fees

Chesterton UK Services Limited trading as Chestertons for themselves and for the vendor of this property whose agents they are, give notice that (i) these particulars do not constitute any part of an offer or contract, (ii) all statements contained within these particulars are made without responsibility on the part of Chestertons or the vendor, (iii) whilst made in good faith, none of the statements contained within these particulars are to be relied upon as a statement or representation of fact, (iv) any intending purchasers must satisfy themselves by inspection or otherwise as to the correctness of each of the statements contained within these particulars, (v) the vendor does not make or give either Chestertons or any person in their employment any authority to make or give representation or warranty whatsoever in relation to this property. Wide angle lenses may be used. ©Copyright Chestertons | Chesterton Global Ltd | Registered Office 5th Floor, The Lantern, 75 Hampstead Road, London, NW1 2PL Registered Company Number 05334580.



This paper is
100% recyclable