



Price

£390,000

Leasehold

5x  2x  3x 

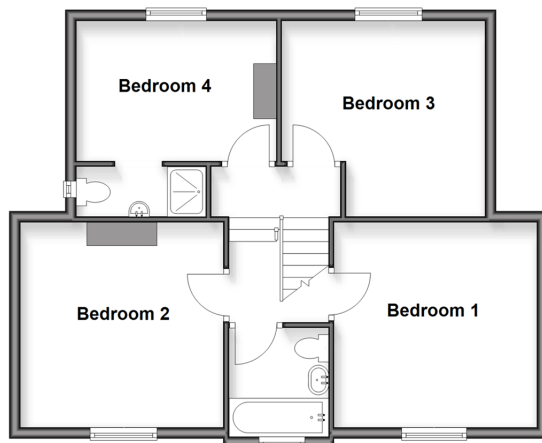
**Crescent Road,
Sandown, Isle of Wight,
PO36**

Pittis 
Helping you move forwards

Ground Floor
Approx. 122.1 sq. metres (1313.8 sq. feet)



First Floor
Approx. 62.8 sq. metres (676.1 sq. feet)



Accommodation

GROUND FLOOR

Hallway

Sitting Room used as Bedroom: 14'5 x 12'2
(4.40m x 3.71m)

Lounge: 14'8 x 12'5 (4.47m x 3.79m)

Bedroom 5: 12'4 x 12'1 (3.76m x 3.69m)

Family Room: 15'11 x 12'2 (4.85m x 3.71m)

Kitchen/Dining Room

Cloakroom

Store Room

FIRST FLOOR

Landing

Bedroom 1: 17'4 x 12'2 (5.29m x 3.71m)

Bedroom 2: 12'2 x 12'0 (3.71m x 3.66m)

Bedroom 3: 12'2 x 12'2 (3.71m x 3.71m)

Bedroom 4: 12'3 x 8'7 (3.74m x 2.62m)

En Suite Shower Room

Bathroom

OUTSIDE

Front & Rear Gardens

Garage & Driveway



Main features

- Beautifully presented throughout with character features
- A stone's throw away from the sea front and town centre
- Private gardens and garage with driveway
- Open plan kitchen/living room ideal for entertaining
- Perfect holiday let or residential home for multi-generational living



Nearest Schools

The Bay CE School
Broadlea Primary School
Shanklin C of E Primary Schools
Gatten & Lake Primary School
Shanklin Pre-School & Nursery



Transport Information

Local buses providing Island wide connections plus local train station with direct links to Ryde Pier Head.



Address

Crescent Road, Sandown, Isle of Wight, PO36



Directions

For directions to this property please contact us.

