



**BEAUCHAMP
ESTATES**

De Vere Gardens

KENSINGTON





A premier four bedroom apartment moments from Hyde Park.



Exterior

Situated on the raised ground floor of a distinguished stucco-fronted Victorian building, this 1,888 sq ft apartment on De Vere Gardens is set along one of Kensington's most desirable residential streets, just moments from Hyde Park and Kensington Palace.

Highlights

- Victorian stucco-fronted building
- Integrated AV and Sonos systems
- RAKO lighting control
- Marble and hardwood finishes





Interiors

The apartment has been meticulously refurbished to a high specification, featuring a spacious reception, an open plan modern kitchen with integrated appliances and a dining area, and bespoke joinery throughout. The principal suite includes a dressing room and ensuite bathroom adorned with book-matched marble. Additional features comprise air conditioning in each room, RAKO lighting control, electric blinds, and integrated AV systems. High-quality finishes, such as custom hardwood flooring and luxury stone surfaces, enhance the property's sophisticated ambiance.

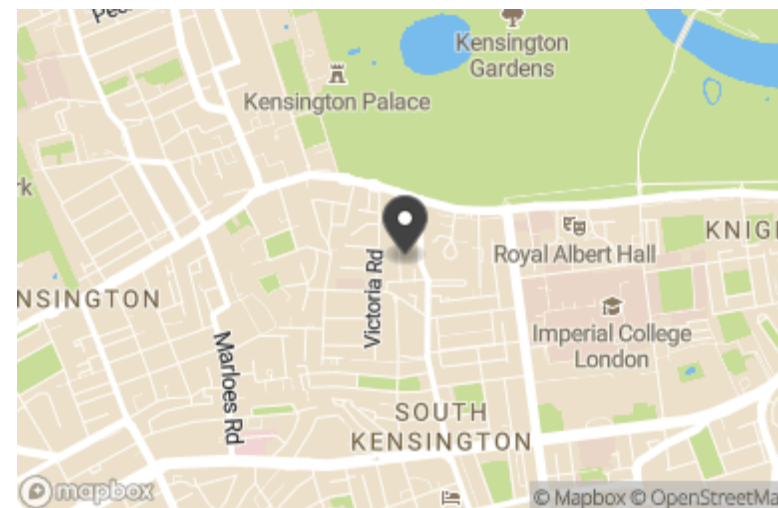


Features

- Air Conditioning
- Lateral Living

Location

De Vere Gardens is a prestigious street in Kensington, located just moments from Kensington Gardens and Kensington High Street. The area offers a range of shops, cafés, and restaurants, with excellent schools such as Thomas's Kensington and Le Lycée Français nearby. Cultural landmarks like The Royal Albert Hall and major museums are close, and transport links are easily accessible via High Street Kensington & Gloucester Road stations.



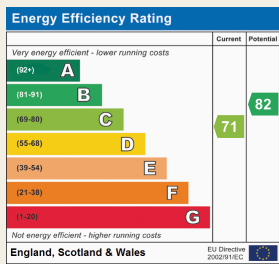
Terms

Price: £4,950,000

Tenure: Share of Freehold

Local Authority: Kensington & Chelsea

Council Tax: H



Beauchamp Estates, their clients and any joint agents give notice that: 1. They are not authorised to make or give any representation or warranties in relation to the property either here or elsewhere, either on their own behalf or on behalf of their client or otherwise. They assume no responsibility for any statement that may be made in these particulars. These particulars do not form part of any offer or contract and must not be relied upon as statements or representations of fact. 2. Any Areas, measurements or distances are approximate. The text photographs and plans are for guidance only and are not necessarily comprehensive. It should not be assumed that the property has all necessary planning, building regulation or other consents and Beauchamp Estates have not tested any services, equipment or facilities. Purchasers must satisfy themselves by inspection or otherwise.

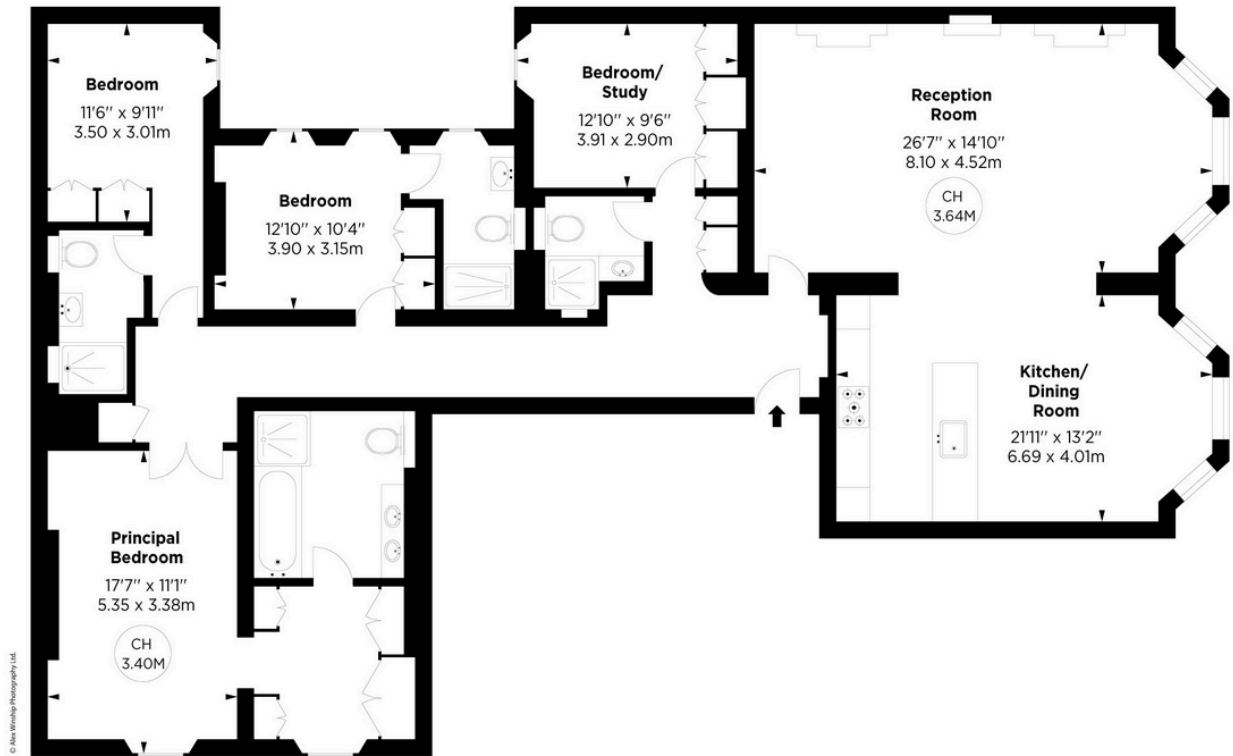
De Vere Gardens, W8

APPROX. GROSS INTERNAL AREA *
1888 Sq Ft - 175.40 Sq M



This floorplan is for GUIDANCE ONLY and NOT FOR VALUATION purposes.

Key :
CH - Ceiling Height



RAISED GROUND FLOOR



*Floorplan for guidance only, not to scale or valuation purposes. It must not be relied upon as a statement of fact. All measurements and areas are approximate and have been prepared in accordance with the current edition of the RICS Code of Measuring Practice.





**BEAUCHAMP
ESTATES**

Beauchamp Estates - Mayfair

24 Curzon Street,
London, W1J 7TF

020 7499 7722

londoninformation@beauchampestates.com

www.beauchampestates.com