



TO LET

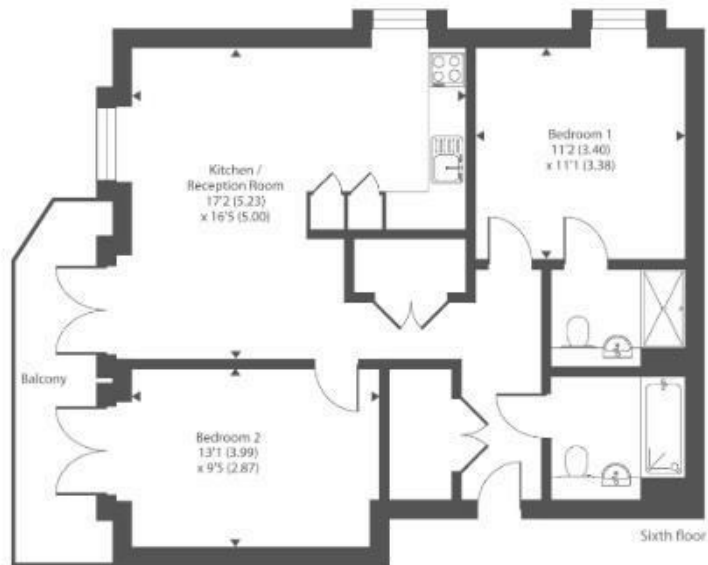
5 New Road, Feltham, TW14 9DB
£1,800 Per Calendar Month

DBK
ESTATE AGENTS

- Available To Rent Immediately!
- Modern Gated Development
- Open Plan Kitchen + Living Area
- Stunning Family Bathroom/ WC + Additional Shower Room/ WC
- Lift Servicing All Floors + Secure Video Entry System
- 12th Floor Apartment with Scenic Views
- Two Double Bedrooms
- Chic Kitchen Complete with Integrated Appliances
- Two Balconies + Ample Internal Storage Options
- Moments Walk From Feltham Station



Approximate Area = 742 sq ft / 68.9 sq m
For identification only - Not to scale



THE PROPERTY

Available to Rent Immediately!

This newly refurbished apartment showcases exceptional interiors completed to an impressive standard and enjoys attractive outlooks. Thoughtfully designed for contemporary living, the property offers two generously sized bedrooms, including a master bedroom with a modern ensuite, as well as plentiful storage throughout.

The spacious open plan kitchen and living area is filled with natural light, creating a welcoming environment ideal for both everyday living and entertaining. The stylish kitchen is fitted with integrated appliances and finished with quality materials, while the living space opens onto a private balcony, providing a pleasant outdoor retreat.

Residents benefit from a secure access system with video entry, lift access to all floors, energy-efficient heating and cooling, and well kept shared outdoor areas that include a children's play space. Feltham Railway Station is just 0.2 miles away, offering excellent transport connections to London Waterloo, Windsor, Weybridge, and Reading, along with convenient links to Heathrow Airport via frequent bus services. Oyster and contactless payment options are also accepted.

The area is well served by local bus routes such as the 285, 117, and H25. A pedestrian route from the station leads over the Longford River and into Feltham town centre, where residents can enjoy a wide range of shops, amenities, and leisure facilities, including The Centre and Leisure West. For those who appreciate green open spaces, the vast parkland and nature reserve of Hounslow Heath is within easy reach, either by bus or around a 30-minute walk.