

Gilbert Close, SE18

£415,000

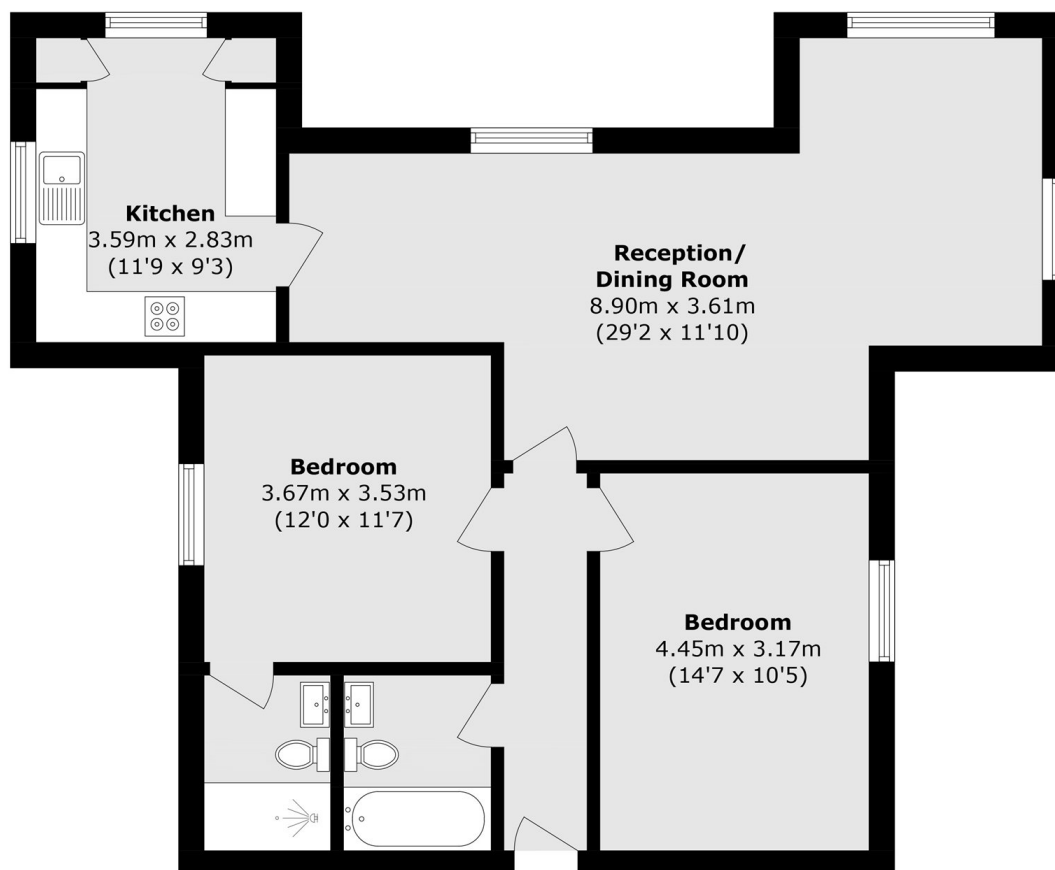
Set within a stunning Victorian development, this beautifully refurbished two double bedroom, two bathroom ground floor flat is offered with a share of freehold. The property has been finished to an exceptional standard throughout and offers well balanced accommodation with a bright reception room and a newly fitted kitchen complete with integrated appliances and underfloor heating. There are two generous double bedrooms, with the principal bedroom benefitting from an en suite shower room, in addition to a modern family bathroom.

Situated in the beautifully maintained Royal Herbert Pavilions, close to Woolwich DLR and Elizabeth Line and regular buses to North Greenwich Jubilee line and within easy access of Blackheath Village.

Features

- Two Bedroom Apartment
- On-Site Gym & Swimming Pool
- Parking
- Refurbished Throughout
- Share Of Freehold
- Close To Transport

Gilbert Close, LONDON, SE18



Total area (approx.): 81.1 sq. m (873.1 sq. ft)