



Cambridge Heath Road, E2 £500,000

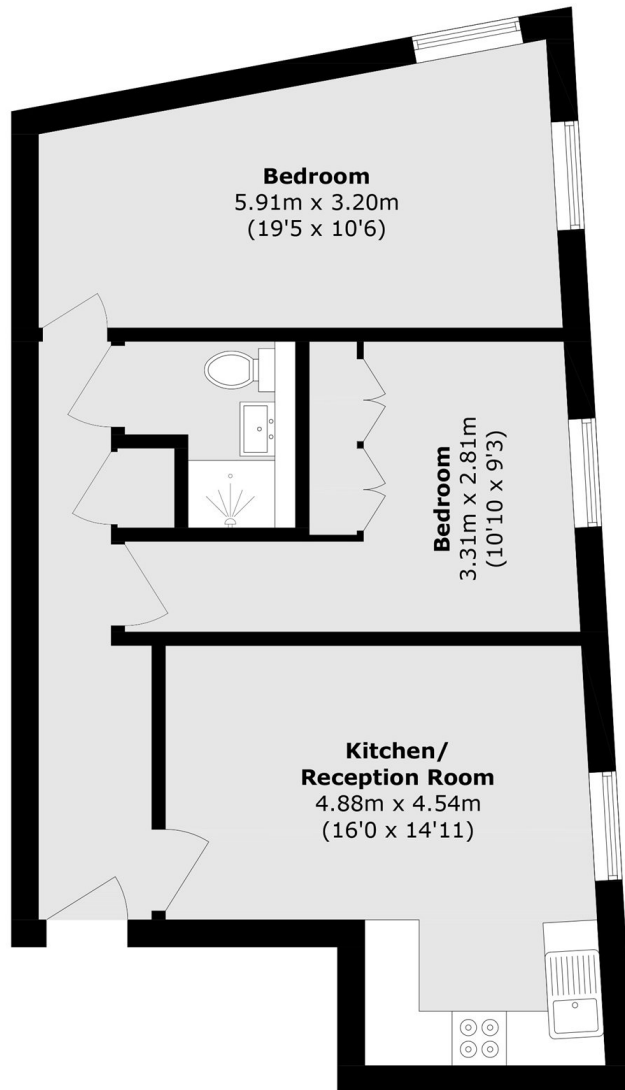
Two bedroom apartment set within a popular industrial inspired development with concrete floors and ceiling and exposed brickwork. The apartment has a spacious open plan living room with ample space to dine and a modernised, fully integrated, kitchen. The apartment has two double bedrooms, one of which in-built storage and a modernised bathroom and plenty more storage in the hallway. The development has lift access and also has a private, landscaped communal roof terrace.

Located a short distance Cambridge Heath (Overground) and Bethnal Green (Windrush, Central) stations this property provides easy access to all corners of the City, as well as the local popular green spaces of Museum Park Gardens, the famed Victoria Park and amenities found in nearby hotspots such as Broadway Market, Columbia Road and Brick Lane.

Features

- Two bedrooms
- One bathroom
- Sought after location
- Modernised throughout
- Great transport links

Cambridge Heath Road, London, E2



Total area (approx.): 58.5 sq. m (629.6 sq. ft)