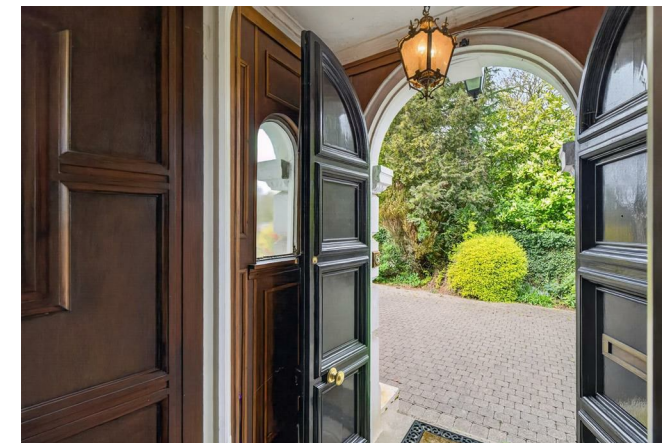
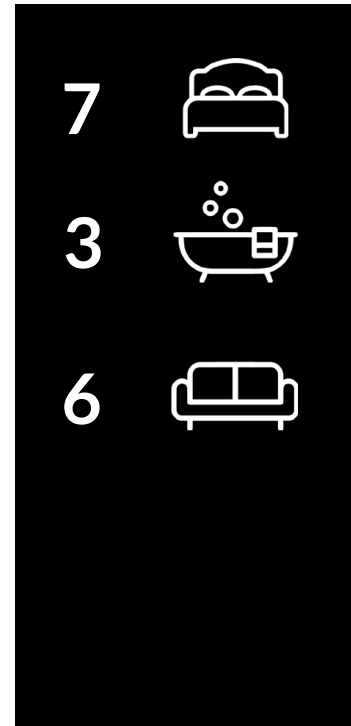
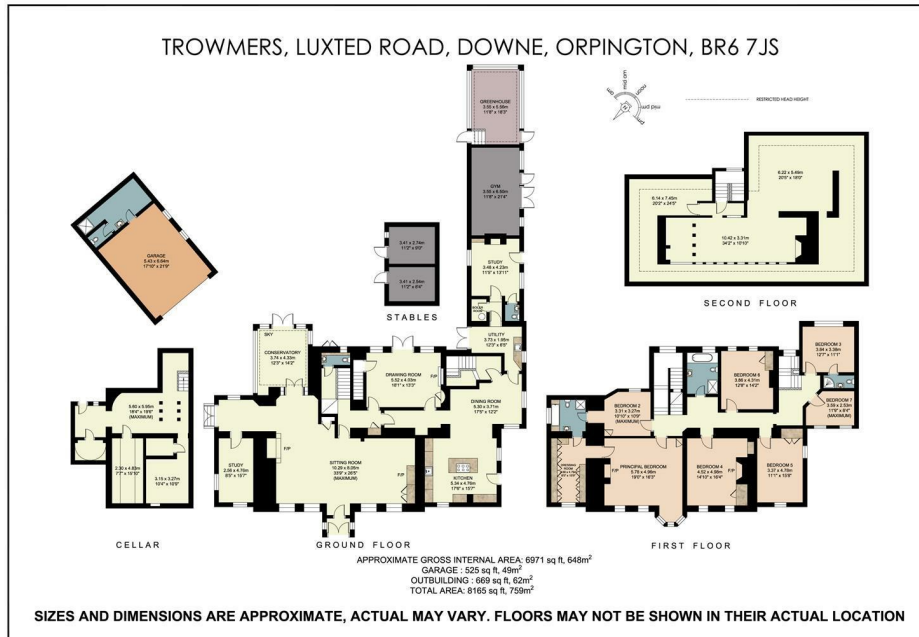




£2,500,000
Luxted Road
Orpington, BR6 7JS

FINE & COUNTRY



Energy Efficiency Rating		Current	Potential
Very energy efficient - lower running costs			
(92 plus)	A		
(81-91)	B		
(69-80)	C		
(55-68)	D		
(39-54)	E	51	
(21-38)	F		
(1-20)	G		
Not energy efficient - higher running costs			
England & Wales		EU Directive 2002/91/EC	

Agents Note: Whilst every care has been taken to prepare these particulars, they are for guidance purposes only. All measurements are approximate and are for general guidance purposes only and whilst every care has been taken to ensure their accuracy, they should not be relied upon and potential buyers/tenants are advised to recheck the measurements



OFFICE ADDRESS
 47B Great Guildford Street
 London Bridge
 SE1 0ES

OFFICE DETAILS
 02076352063
 southeastlondon@fineandcountry.
<https://www.fineandcountry.co.uk>