



EB

17 Kelly Way, Chadwell Heath

Chadwell Heath

£500,000



17 Kelly Way

Chadwell Heath

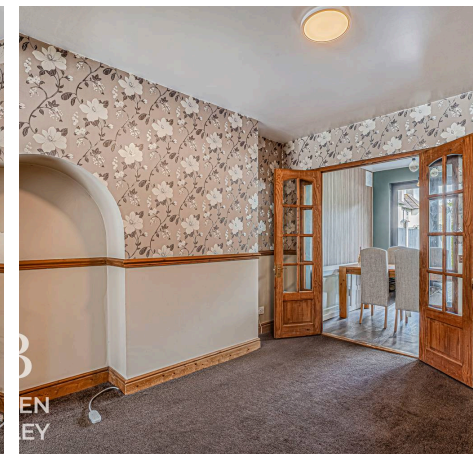
Council Tax band: D

Tenure: Freehold

EPC Energy Efficiency Rating: D

EPC Environmental Impact Rating:

- 4 Bedroom Mid Terrace Home
- Chain Free
- Boasting Loft Conversion & Rear Extension
- Great Condition Throughout
- Plenty Of Amenities Nearby
- Chadwell Heath Elizabeth Line Station In Close Proximity
- Perfect For Young Families
- Quiet Cul-De-Sac





B
BOWDEN
BRADLEY

Reception Room

13' 5" x 11' 0" (4.09m x 3.35m)

Living Room

11' 5" x 9' 6" (3.48m x 2.90m)

Kitchen/Diner

16' 4" x 16' 8" (4.98m x 5.07m)

Bedroom

13' 2" x 11' 0" (4.01m x 3.35m)

Bedroom

11' 6" x 10' 7" (3.51m x 3.23m)

Bedroom

8' 8" x 6' 0" (2.64m x 1.83m)

Bathroom

6' 3" x 5' 9" (1.91m x 1.75m)

Bedroom

17' 0" x 13' 6" (5.18m x 4.12m)

Shower Room

4' 7" x 5' 6" (1.40m x 1.68m)



B
VDEN
DLEY

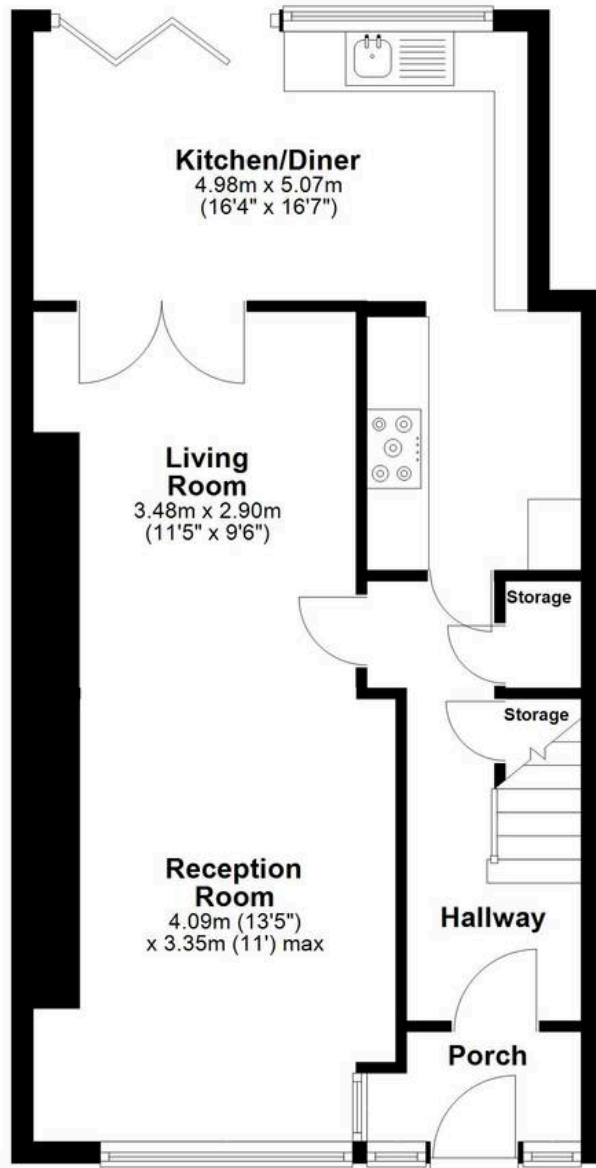


B
VDEN
DLEY



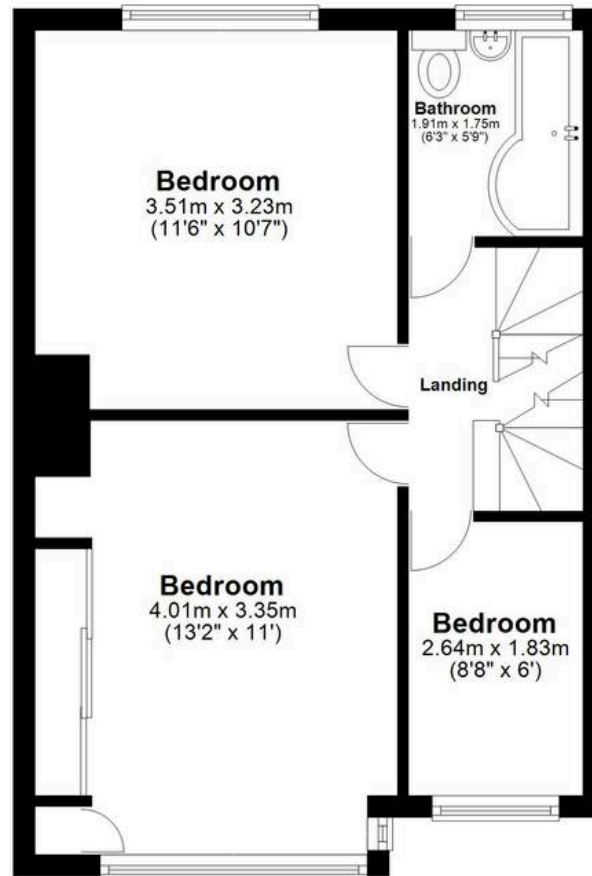
Ground Floor

Approx. 51.0 sq. metres (549.1 sq. feet)



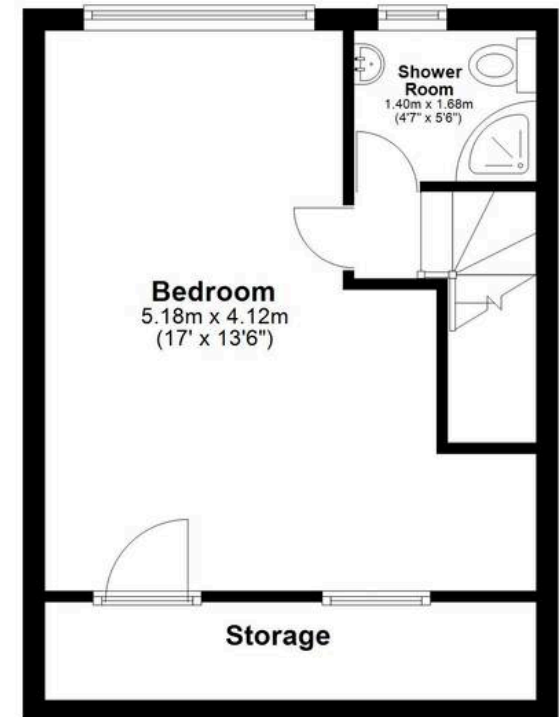
First Floor

Approx. 38.4 sq. metres (412.9 sq. feet)



Second Floor

Approx. 28.0 sq. metres (300.9 sq. feet)



Total area: approx. 117.3 sq. metres (1263.0 sq. feet)



Bowden Bradley

Bansal House, Bracken Industrial Estate, 185 Forest Road - IG6 3HX

02080593593 · info@bowdenbradley.co.uk · bowdenbradley.co.uk/