



Jefferson Plaza, E3

£576 Per week

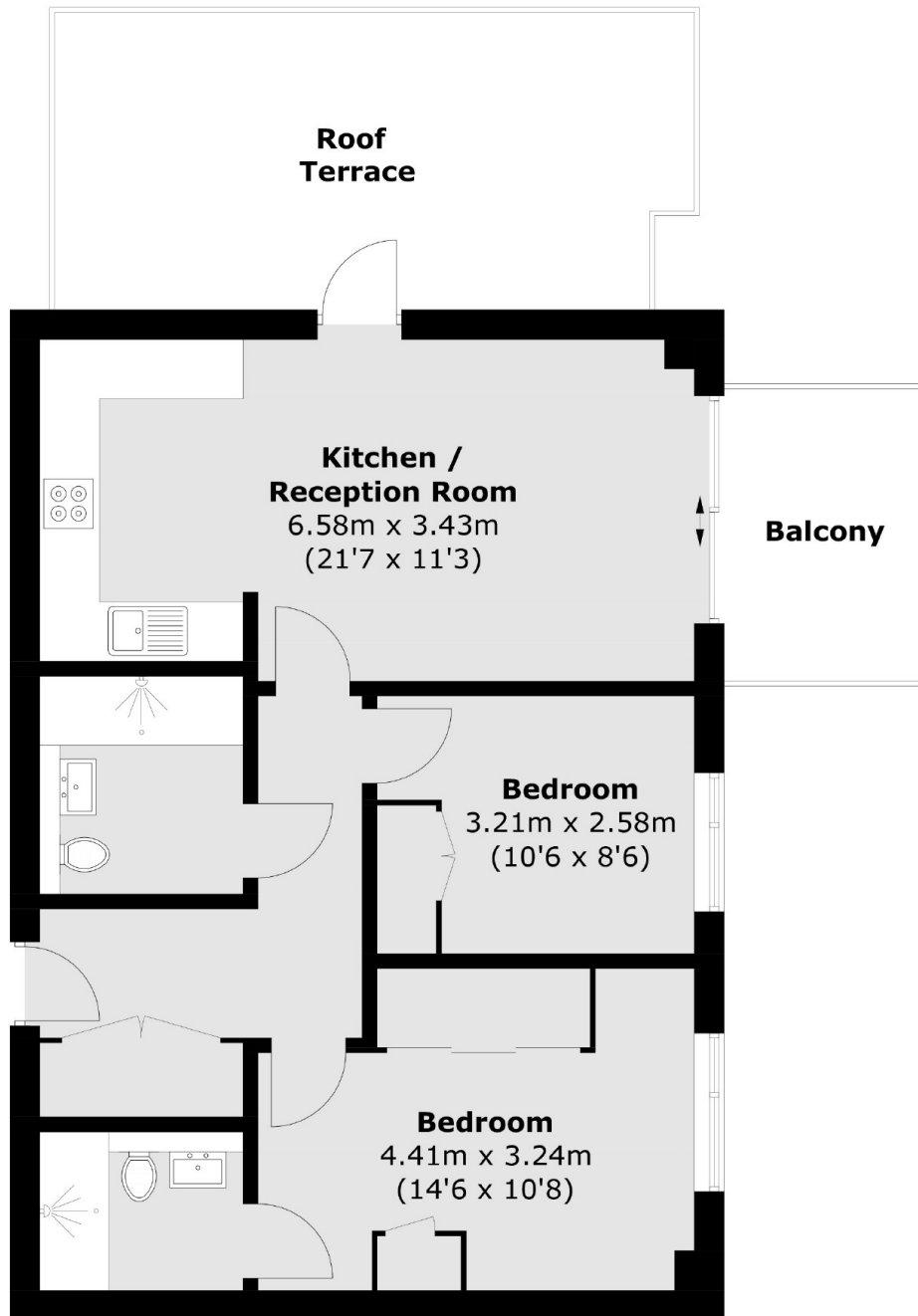
A large two double bedroom apartment in the ever popular Marner Point. This 18th floor apartment has skyline views, Large open plan reception leading on private sky garden and balcony which comes furnished.

Central location within easy reach of Bromley by Bow and Stratford for all local shops, bars and restaurants.

Features

- Two Double Bedrooms
- Two Bathrooms
- Private Sky Garden
- South Facing
- Concierge
- Gym

Jefferson Plaza, London, E3



Total area (approx.): 64.0 sq. m (688.9 sq. ft)
Balcony area : 6.0 sq. m (64.6 sq. ft)
Roof Terrace area : 18.9 sq. m (203.4 sq. ft)