



## CAMDEN ROAD, NW1

£750,000

Split level maisonette  
Two double bedrooms  
Two bathrooms  
Two terraces  
Residents roof garden  
Concierge

@marshandparsons  
marshandparsons.co.uk

MARSH &  
PARSONS



# ABOUT THE PROPERTY

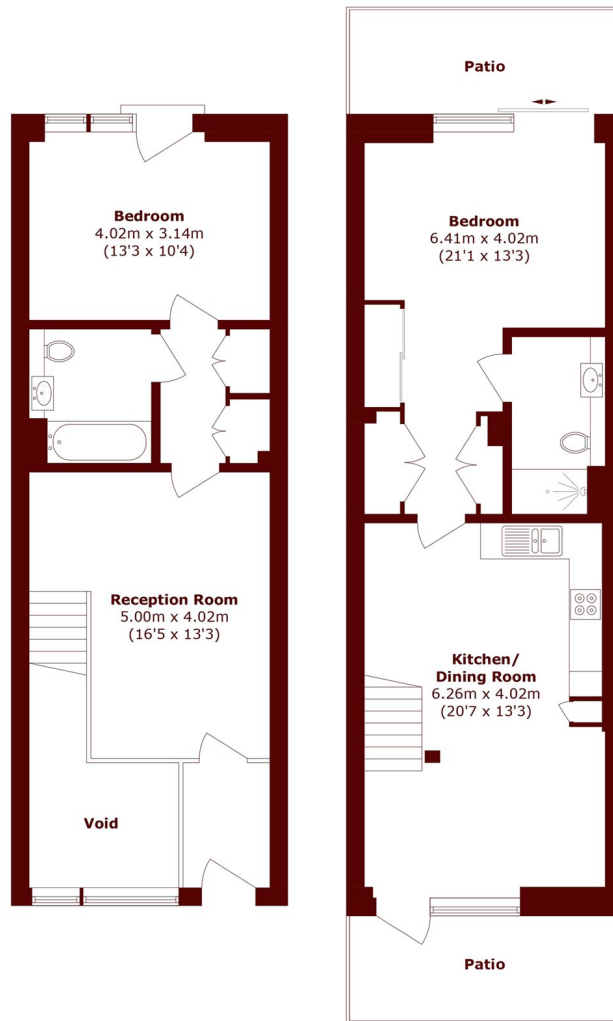
Located on Camden Road, this well-presented two double bedroom, two bathroom split-level maisonette offers contemporary living in a highly convenient setting.

With its own private entrance, the property provides over 1,000 sq ft of internal living space arranged across two levels. The layout offers flexibility, with the bedrooms positioned on separate floors, making it suitable for sharers, guests, or those working from home.

The accommodation includes a bright open-plan living area with modern finishes, two generously sized double bedrooms, an en-suite to the principal bedroom, and a second bathroom. Further benefits include two private



# STEP INSIDE CAMDEN ROAD



**Ground Floor**

**Lower Ground Floor**

Total area (approx.): 95.0 sq m (1,022.6 sq ft)  
(Excluding Void)

Patios (approx.): 16.7 sq m (179.8 sq ft)

Camden  
020 7244 2200

Energy Rating: We aim to make our particulars both accurate and reliable. However, they are not guaranteed; nor do they form part of an offer or contract. If you require clarification on any points then please contact us, especially if you're traveling some distance to view. Please note that appliances and heating systems have not been tested and therefore no warranties can be given as to their good working order

**MARSH &  
PARSONS**