



TK International
020 7794 8700
www.t-k.co.uk

Residential Sales
Residential Lettings
Property Management

Sales Office:
9 Heath Street
Hampstead
London NW3 6TP
E: sales@t-k.co.uk

Lettings Office:
16-18 Heath Street
Hampstead
London NW3 6TE
E: lettings@t-k.co.uk

tk.international
TK International
TK International

Est.
1998



Willow Road Hampstead Village NW3

Tucked away on a peaceful, tree-lined turning just moments from the vast greenery of Hampstead Heath, this beautifully presented two bedroom, two bathroom patio apartment offers an exceptional lifestyle in one of Hampstead's most coveted settings.

Positioned within an elegant red brick Victorian residence, the home spans approximately 840 sq ft and has been thoughtfully designed to maximise light and space. A stylish reception room forms the heart of the property, complemented by a sleek, fully integrated kitchen perfect for both everyday living and entertaining. Doors open directly onto a private patio, creating a seamless indoor outdoor flow.

The principal bedroom features a contemporary en-suite, while a second generously sized bedroom is served by a modern family bathroom. High quality wood flooring and a calm, neutral palette run throughout, enhancing the sense of understated sophistication.

What truly sets this home apart is its unrivalled location. The sweeping landscapes, ancient woodlands, and iconic bathing ponds of Hampstead Heath are quite literally on your doorstep, offering a rare connection to nature in the capital. Meanwhile, the boutiques, cafés, and historic charm of Hampstead Village are just a short stroll away, delivering the perfect balance of tranquillity and vibrant village living.

Excellent transport links are close at hand, with South End Green and Belsize Park both within easy reach, providing access to the Northern Line and Overground for swift connections across London.

£999,950

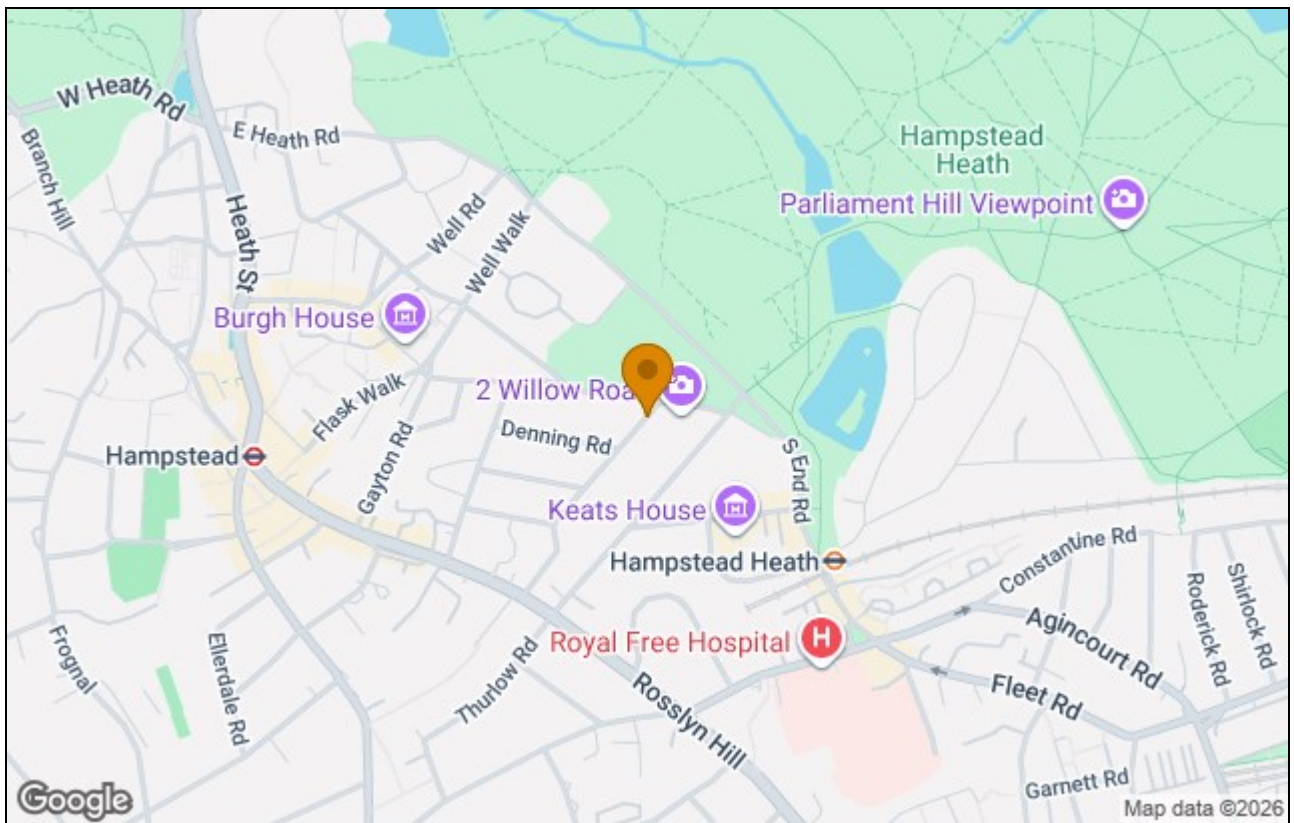
Share of Freehold



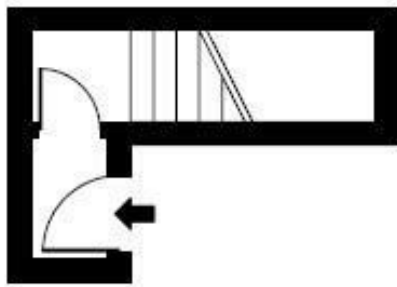




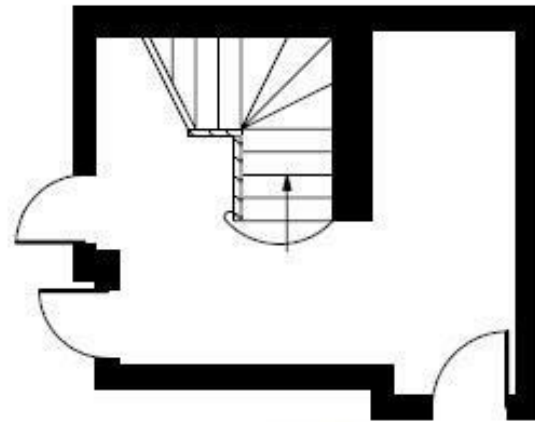




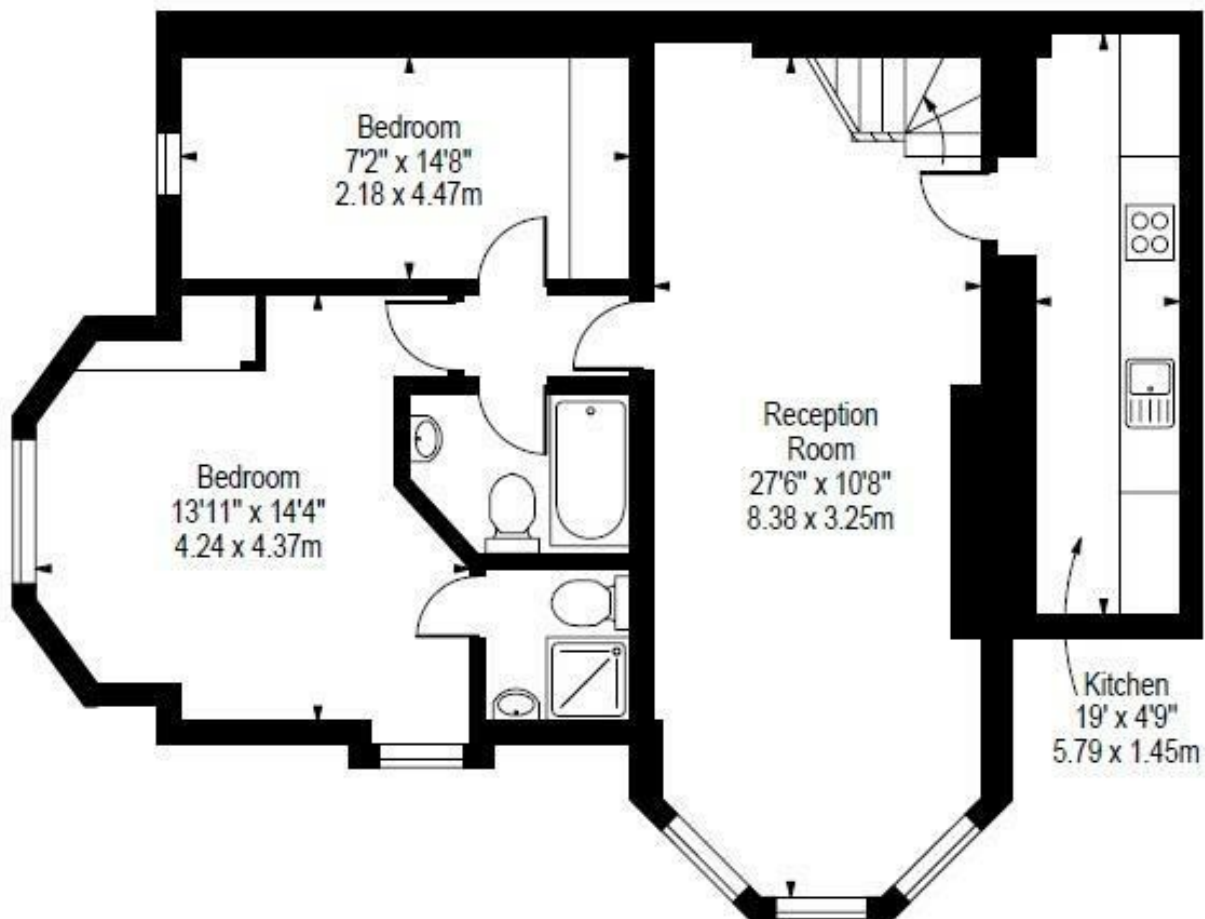
Willow Road,
Hampstead, NW3 1TH



Ground Floor
Stairwell



Ground Floor
Communal Entrance Hall



Lower Ground Floor

Approx Gross Internal Area 840 Sq Ft - 78.04 Sq M
(Excluding Ground Floor Communal Entrance Hall)

For Illustration Purposes Only - Not To Scale

Floor Plan by www.bpmmediagroup.com

Ref. No. P45594