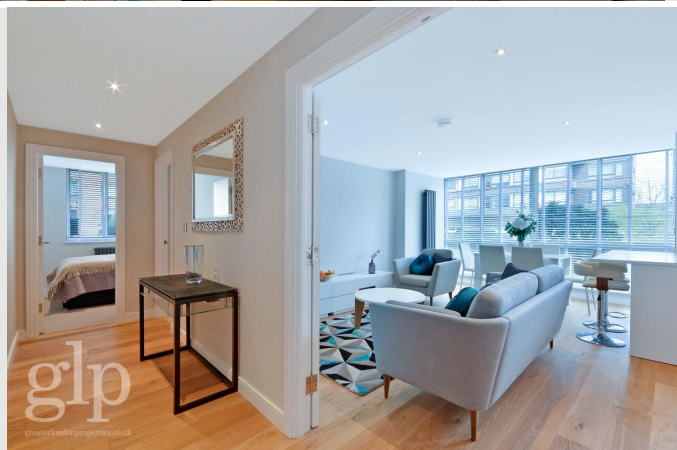
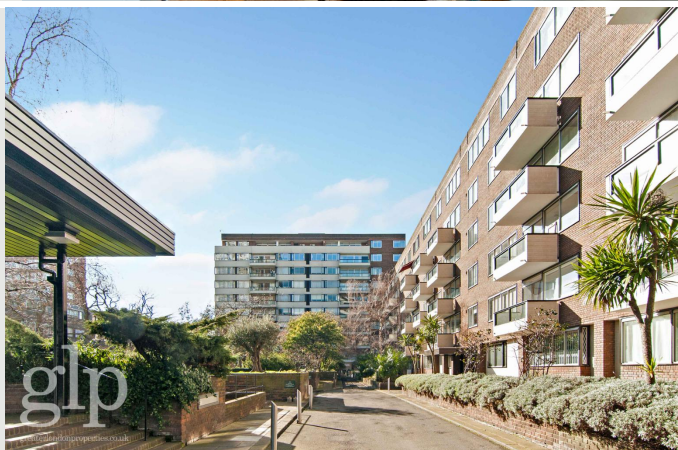
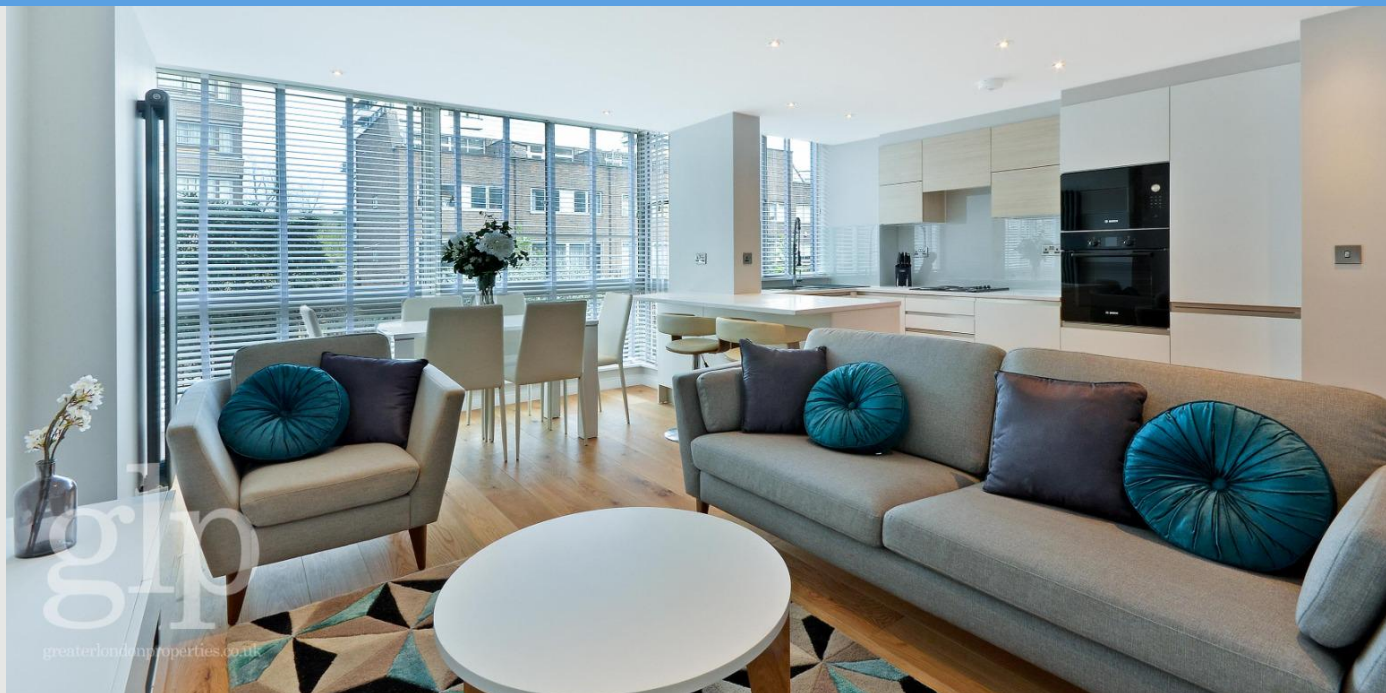


Cambridge Square
Greater London

Guide Price £800,000
Sales



Greater London Properties Presents...

- Two Great Sized Double Bedrooms
- Gated Complex With Gardens Throughout And 24 Hour Porter
- Generating In Excess Of 40,000 Per Annum In Rent
- Recently Extended Lease
- Excellently Located For Local Amenities And Parks
- Hyde Park



VIEW ONLINE



CALL NOW 0207 113 1066

www.glp.co.uk

@greaterlondonproperties

Twitter Facebook LinkedIn Instagram

glp
greaterlondonproperties.co.uk