



Stile Hall Gardens, London, W4

Guide Price £1,000,000

WHITMAN & CO.

SALES · LETTINGS · COMMERCIAL

- Large entrance hall
- Kitchen/breakfast room
- Four bedrooms

- Two reception rooms
- 80' south facing garden
- No onward chain

Tenure - Freehold
Local Authority - Hounslow
Council Tax - Band F

THE PROPERTY

An unmodernised Edwardian Terraced House offering exceptional scope with the added benefit of an 80' south-facing garden, and ideally located in this sought-after residential street.

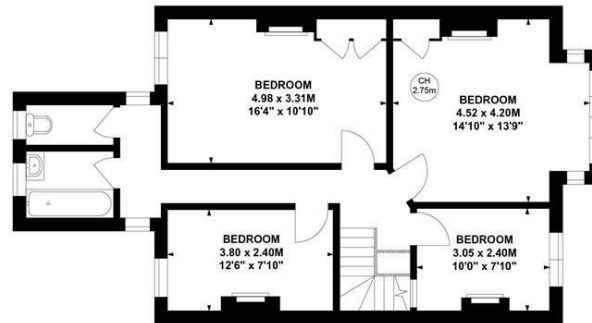
In need of complete refurbishment, the property comprises four bedrooms, large loft, bathroom and separate WC, large entrance hall, two reception rooms, kitchen/breakfast room, scullery, and a spacious cellar.

The house is situated within close proximity of numerous transport links and the extensive range of shops, bars and restaurants on Chiswick High Road. Offered for sale with no onward chain.

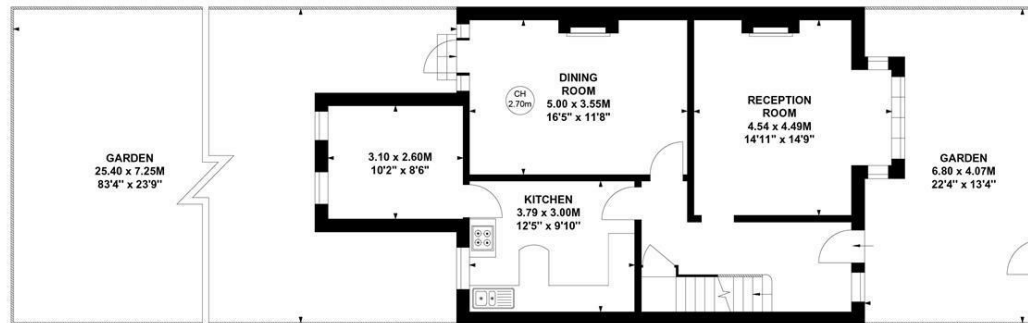
Stile Hall Gardens, W4

Approximate Gross Internal Area
149.35 sq m / 1607 sq ft

Key :
CH - Ceiling Height



First Floor



Ground Floor



Lower Ground Floor

Not to scale, for guidance only and must not be relied upon as a statement of fact.
All measurements and areas are approximate only

SITUATION



5-7 Turnham Green Terrace, Chiswick, London, W4 1RG

Tel 020 8747 8800

E-mail sales@whitmanandco.com

Website www.whitmanandco.com