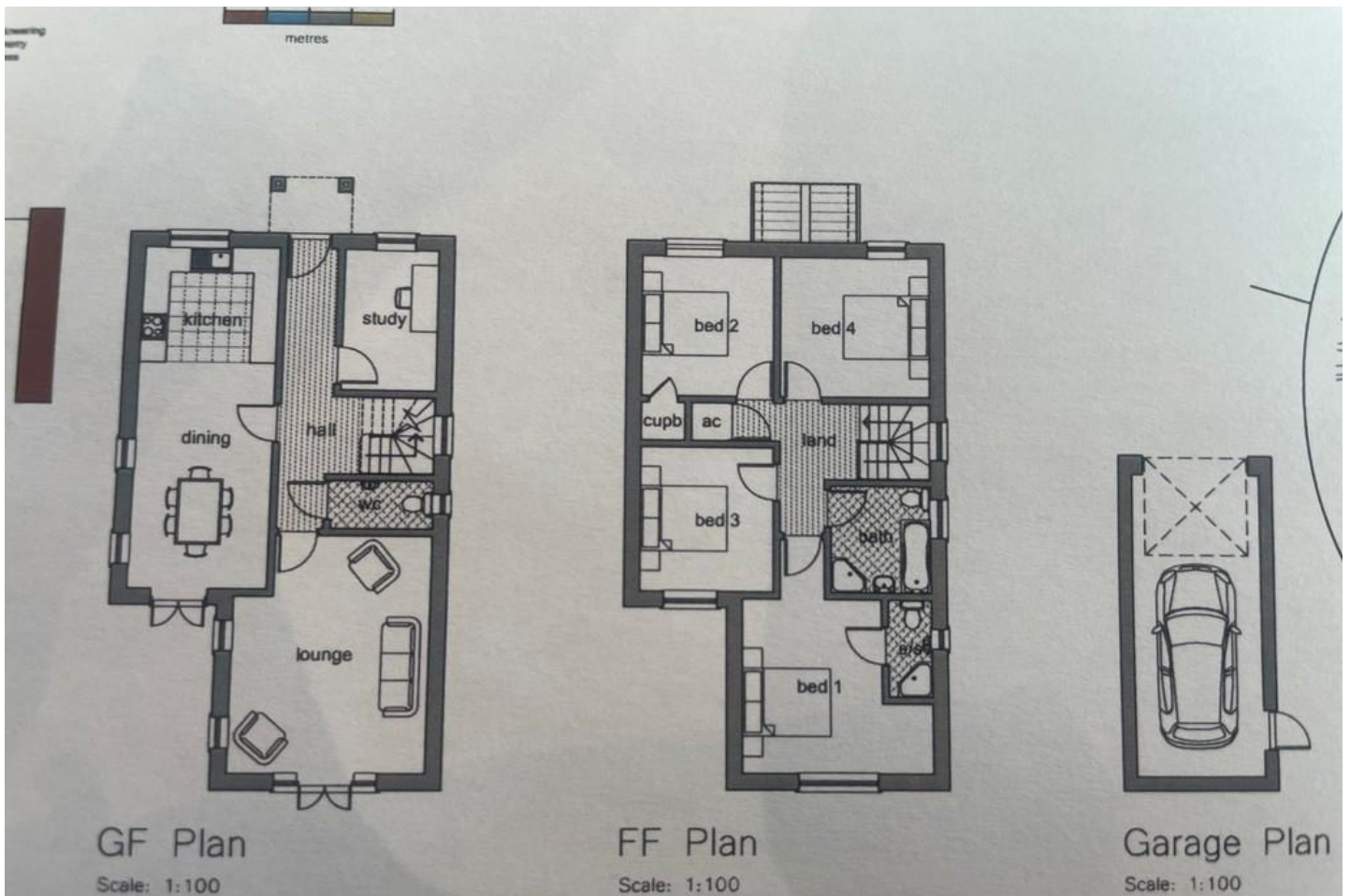


# £120,000

29 Mill Road, Murrow, PE13 4HF



**To arrange a viewing call us now on 01354 701000**

Boasting a village location with field views this building plot measuring approx 40m x 10m (STS) and has planning for a four bedroom detached house with garage and must be viewed to fully appreciate all that is on offer including mobile home on site with two bedrooms and LPG central heating, south facing garden and so much more! Call to view today! Planning reference F/YR19/0293/F



# £120,000

29 Mill Road, Murrow, PE13 4HF



Boasting a village location with field views this building plot has planning for a four bedroom detached house with garage and must be viewed to fully appreciate all that is on offer including mobile home on site, south facing garden and so much more! Call to view today! Planning reference F/YR19/0293/F

The mobile has LPG heating and is on mains drainage which has been signed off to retain the planning permission.



#### Buyer ID Checks

To meet legal requirements, we must verify the identity of all buyers. Our partner, Simplify, will handle this process and will contact you directly once your offer is accepted, subject to contract, to collect the necessary details and payment. The cost is £40 + VAT (£48) per transaction, payable upon offer acceptance. A memorandum of sale can only be issued once these checks are complete.



Our team will guide you through the process when you make an offer on a property.

#### Disclaimer

All property details, photographs, floorplans, and other marketing materials produced by Ellis Winters are for general guidance only and do not form part of any contract. While we strive for accuracy, measurements, descriptions, and other information are provided in good faith but should be independently verified. We recommend that prospective buyers conduct their own due diligence before making any decisions.



ellis winters 52 High Street, March, Cambridgeshire, PE15 9JR

Tel: 01354 701000 Email: [info@elliswinters.co.uk](mailto:info@elliswinters.co.uk) [www.elliswinters.co.uk](http://www.elliswinters.co.uk)

**ellis winters**  
sales & lettings since 2001

