

Ashtons

Apartment 20 Castle Chambers 5 Clifford Street YO1 9RG

£1,850 PCM

2



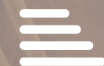
2



1



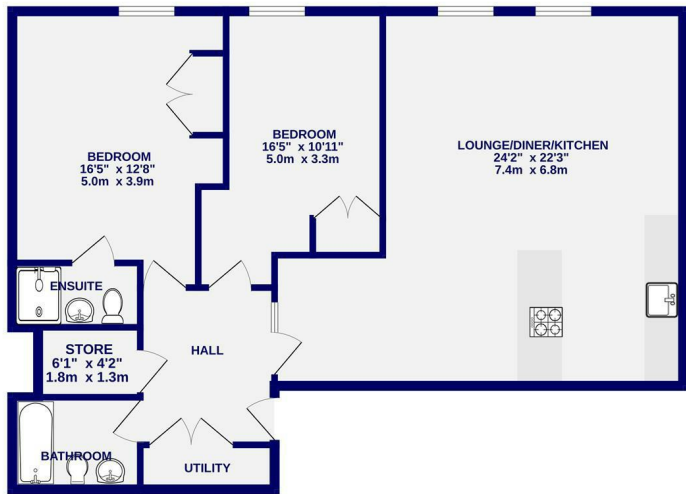
C



Located in the heart of the city centre is this large two bedroom apartment. Castle Chambers occupies a prime position on Clifford Street, just moments from Clifford's Tower, King's Staith, and a wealth of shops, restaurants, and cultural attractions. This luxurious apartment is offered on a furnished basis and is located on the top floor top the building. Enter via spacious entrance hall with utility cupboard housing washer/dryer, leading to large open plan living/kitchen with appliances including induction hob, oven, fridge/freezer and dishwasher and breakfast bar; main bathroom with shower over bath and two large double bedrooms with fitted wardrobes, one with ensuite shower room. No onsite parking. Bike storage.

Available Now.

Council Tax Band D / Initial 6 month tenancy / EPC Rating C / Deposit £1950



TOTAL FLOOR AREA: 972 sq.ft. (90.3 sq.m.) approx.
Whilst every attempt has been made to ensure the accuracy of the foregoing measurements of areas and any other items are approximate. It is included in the plan the measurements will form part of the overall offer and we accept no responsibility for any errors, omissions or misstatements. This plan is for illustrative purposes only and should be used as such by any prospective purchaser. The services, systems and appliances shown have not been tested and no guarantee as to their operation.
Made with Metropix C2025

