

FLETCHERS

ESTATE AGENTS



Chiswick High Road, W4

£625,000

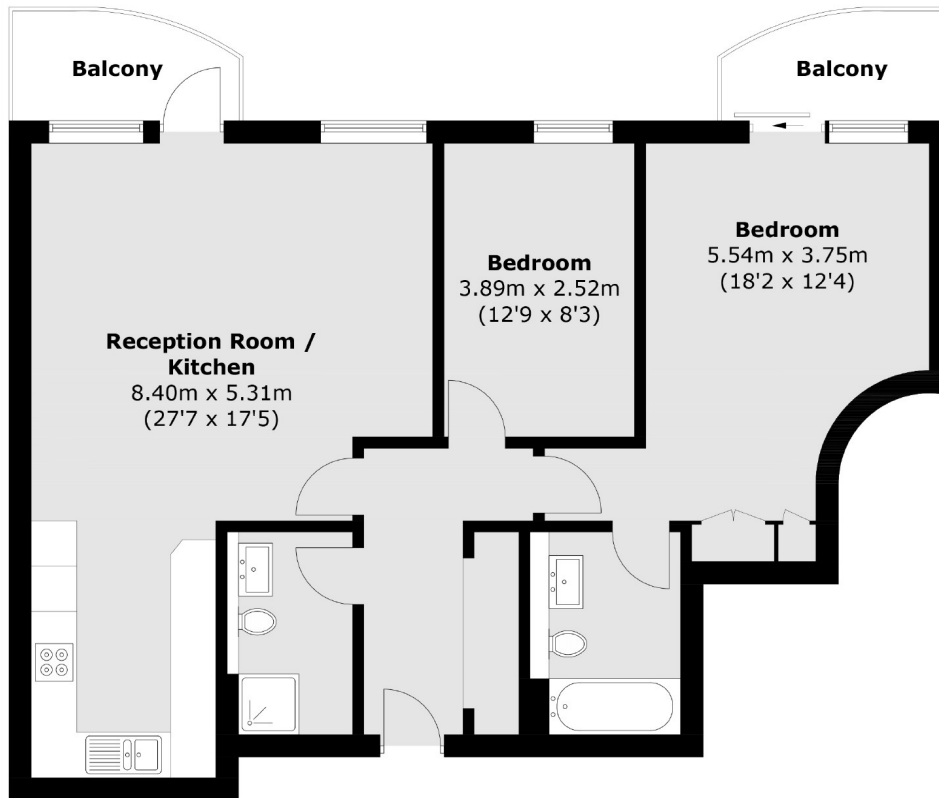
Accessed via lift with secure entry and underground parking, a spacious two bedroom apartment with fantastic entertaining space in a large open plan kitchen / dining / reception room. Two double bedrooms are accompanied by a family bathroom and an en suite. Two private balconies have superb views over the protected nature reserve behind.

Chiswick High Road offers a brilliant array of shops, restaurants and cafés to choose from, as well as being serviced by Gunnersbury and Chiswick Park stations. The Thames riverside and Gunnersbury Park are popular spots nearby.

- Two Bedrooms • Two Bathrooms • Gated Parking Space • Lift Access • Two Balconies • No Onward Chain •

FLETCHERS

ESTATE AGENTS



Total area (approx.): 84.0 sq. m (904.2 sq. ft)
Balcony area : 7.9 sq. m (85.0 sq. ft)

Fletchers Chiswick Turnham Green Sales
58 Turnham Green Terrace, London, W4 1QP
020 8987 3000
chiswicksales@fletcherestates.com

Energy Rating: B. We aim to make our particulars both accurate and reliable. However they are not guaranteed; nor do they form part of an offer or contract. If you require clarification on any points then please contact us, especially if you're traveling some distance to view. Please note that appliances and heating systems have not been tested and therefore no warranties can be given as to their good working order.