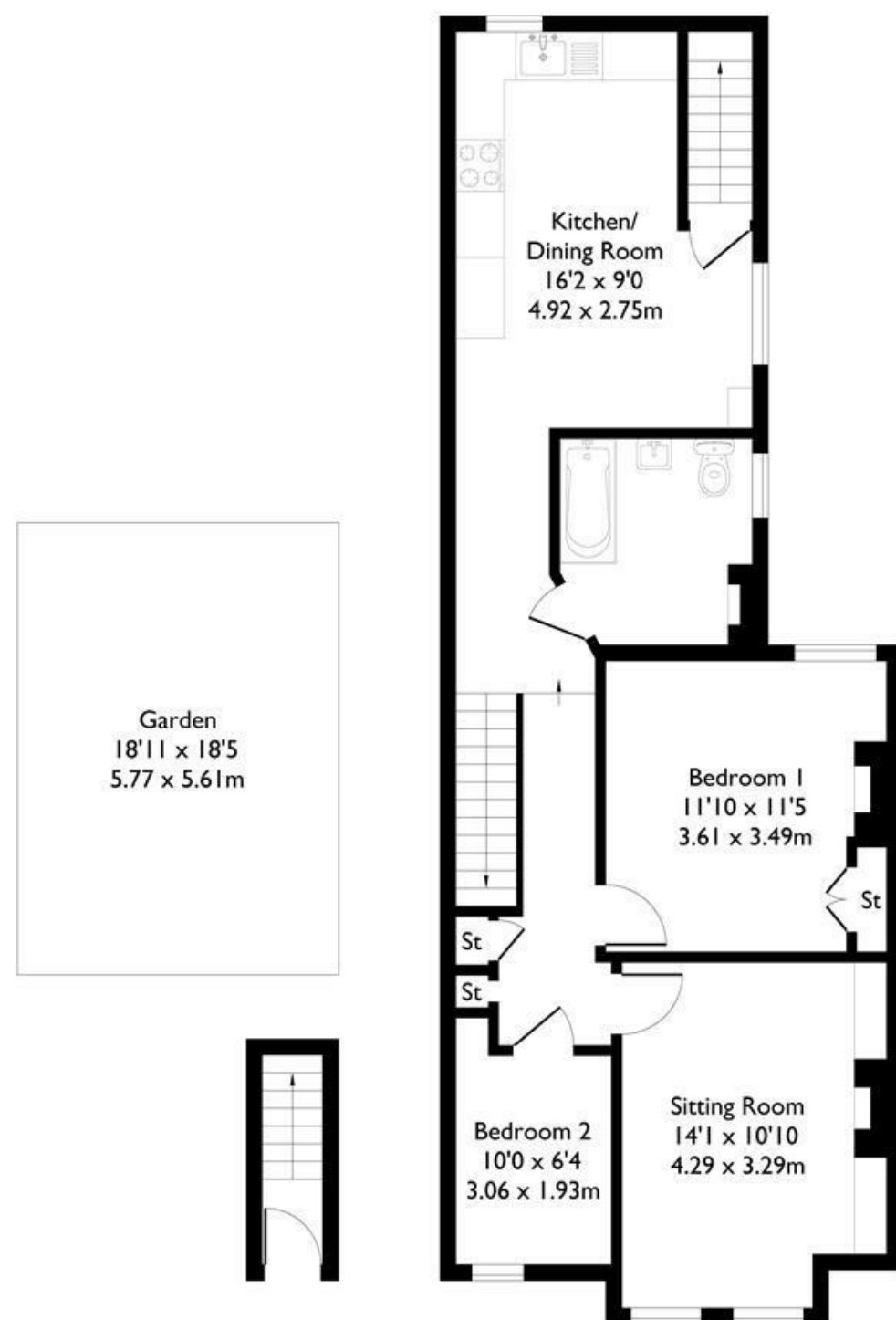


## Seaford Road, London, W13

Approximate Floor Area = 71.9 sq m / 774 sq ft



Ground Floor First Floor



### FLAT

**Seaford Road W13**  
**£2,250**

### FEATURES

- Two Bedroom Flat
- Shared Garden
- Close to Shops and Transport
- Modern and Tasteful Decor
- Large Kitchen Diner
- Newly Renovated Bathroom



FLAT

# Seaford Road W13

£2,250

Nestled on the charming Seaford Road in West Ealing, this delightful two-bedroom first-floor flat offers a perfect blend of modern comfort and period charm. The property has been tastefully updated by the current owner, ensuring a welcoming atmosphere throughout.

The bright and spacious living room, with a large bay window that floods the space with natural light, creating an inviting environment. The tasteful mix of period features and contemporary design adds character and warmth to the home.

