

The Laurels, 2 Dodnor Mews Dodnor Lane, Newport, PO30 5JN

Asking Price £820,000

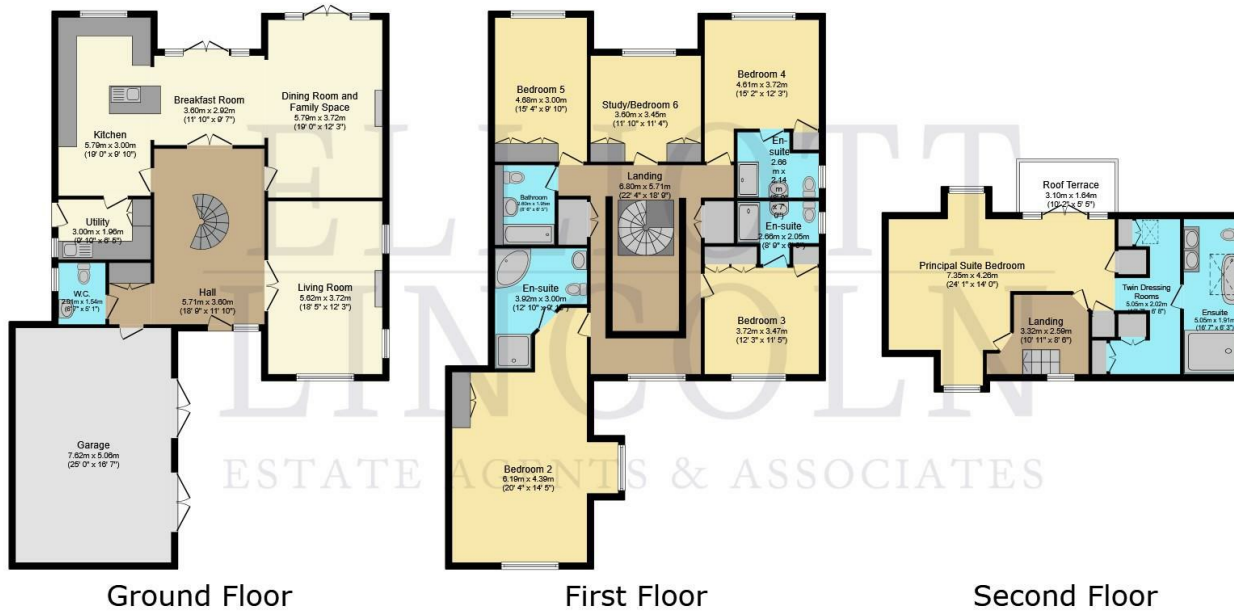
EPC Rating: C Council Tax Band: G



A striking and substantial executive-style family home, The Laurels is an impressive contemporary residence offering expansive, high-spec accommodation of approximately 360 sq. m / 3,600 sq. ft. Beautifully light throughout and designed with modern family living in mind, this outstanding home in a semi rural setting immediately impresses from the moment you step through the front door, where a large welcoming entrance hall and central contemporary staircase create a bold and stylish first impression. A good size garden and an integral double garage only adds to the boxes that this home ticks.

Call or WhatsApp: 01983 642622  
office@elliottlincoln.co.uk  
www.elliottlincoln.co.uk

2 Dodnor Mews, Dodnor Lane, Newport, PO30 5JN



This floor plan is for illustrative purposes only. It is not drawn to scale. Any measurements, floor areas (including any total floor area), openings and orientations are approximate. No details are guaranteed, they cannot be relied upon for any purpose and do not form any part of any agreement. No liability is taken for any error, omission or misstatement. A party must rely upon its own inspection(s). Powered by www.Propertybox.io

Energy Efficiency Rating		Current	Potential
Very energy efficient - lower running costs			
(92 plus)	A		
(81-91)	B		
(69-80)	C		
(55-68)	D		
(39-54)	E		
(21-38)	F		
(1-20)	G		
Not energy efficient - higher running costs			
		77	83
<b>England &amp; Wales</b>		EU Directive 2002/91/EC	