



The Bamburgh

3 bedroom home



orionhomes.co.uk

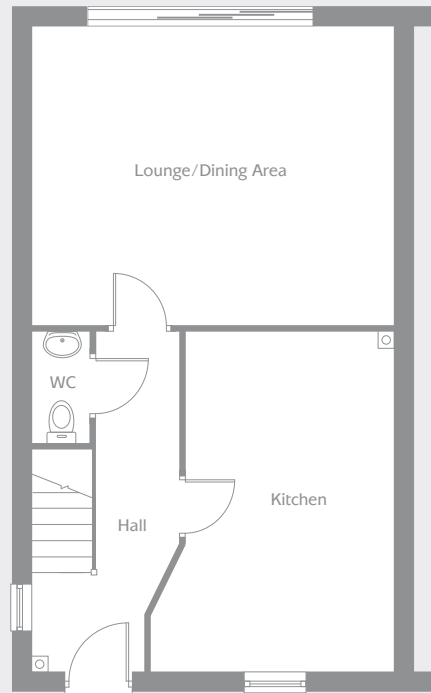
OrionHomes
SO GOOD TO COME HOME TO



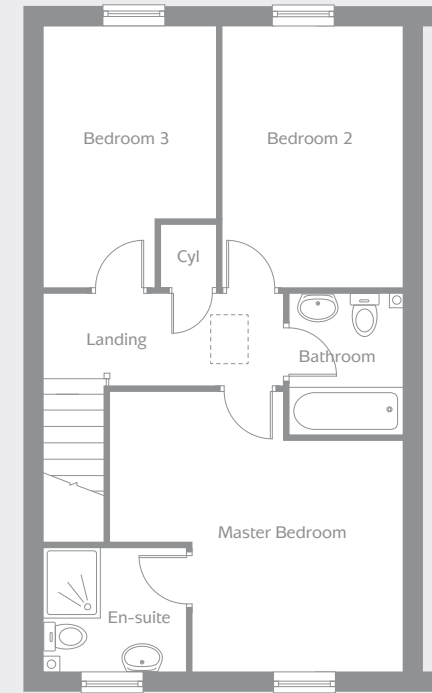


The Bamburgh is a spacious three bedroom home ideal for growing families

- Lounge with dining area and tri-sliding doors to the garden
- Generous kitchen overlooking the front of the home
- Master bedroom with en-suite shower room
- Two further bedrooms
- Stylish family bathroom



GROUND FLOOR



FIRST FLOOR

Lounge/Dining Area	5.24m x 4.35m	17'1" x 14'2"
Kitchen	3.02m x 4.95m	9'9" x 16'2"
WC	0.89m x 1.68m	2'9" x 5'5"

Master Bedroom	4.15m x 3.35m	13'6" x 10'9"
En-suite	2.10m x 1.81m	6'8" x 5'9"
Bedroom 2	2.67m x 3.83m	8'7" x 12'5"
Bedroom 3	2.52m x 3.83m	8'3" x 12'5"
Bathroom	1.73m x 2.12m	5'6" x 6'9"

orionhomes.co.uk

Computer generated image for this house type is for guidance only. Our Sales Advisor will provide external material details for each development. Please note: these dimensions are given as a guideline only and should not be relied upon to determine the size of carpets, appliances, furniture etc. Although every effort is made to ensure accuracy, exact details may vary during the course of construction and no responsibility can be accepted for any mis-statements in this display, which is not a contract. The Company also reserves the right to alter specifications without notice.



OrionHomes
50 GOOD TO COME HOME TO

