

Woodland Way, Failand BS8 3UD

Asking Price £550,000

- Four Bedroom Semi-Detached Home
- Light & Spacious Throughout
- Open Plan Kitchen / Dining Room
- Living Room
- Master Bedroom with En-Suite Shower Room
- Three Further Doubles
- Family Bathroom
- Landscaped Gardens
- Off Street Parking

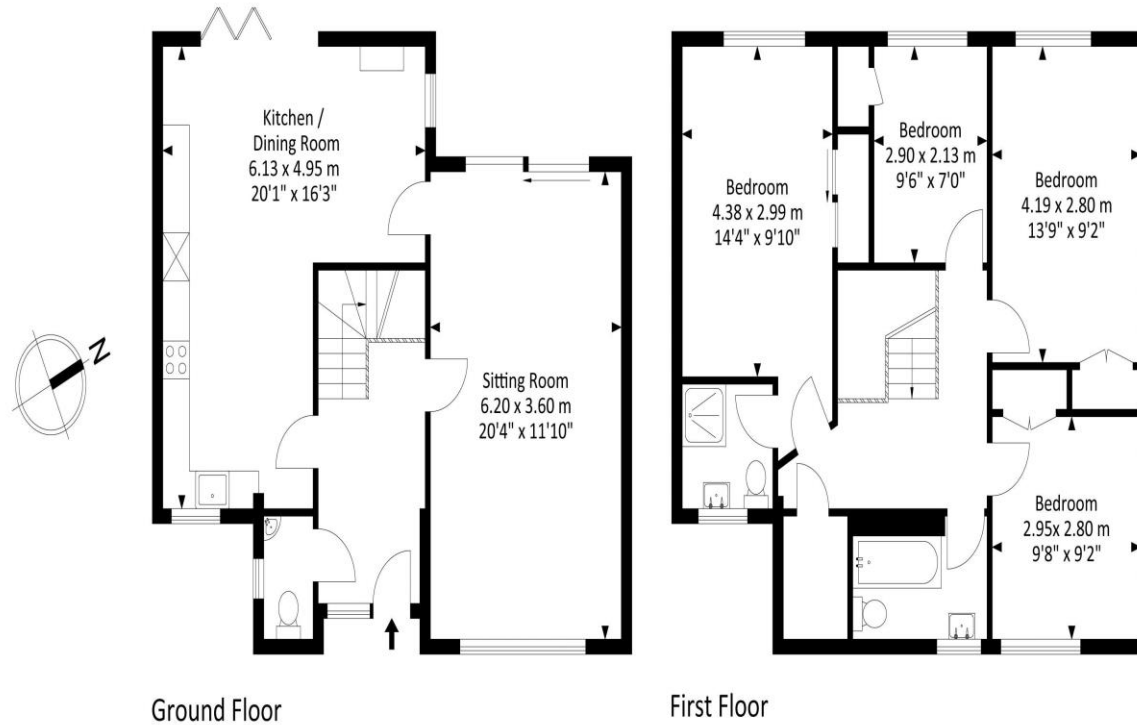
SUMMARY

Located in the popular village of Failand, this four bedroom semi detached home offers light and spacious accommodation throughout. The property has been modernized and updated by the current vendors and is well presented. The accommodation is laid over two floors with the ground floor consisting of an entrance hallway with limestone tiles, cloakroom, open plan kitchen / dining room with bi fold doors with access to the landscaped gardens. The modern fitted kitchen offers a range of base and wall units in a shaker style with timber worktop over, integrated appliances include five ring induction hob, double oven, microwave, and dishwasher with space for a fridge freezer. The generous living room is light and airy with oak flooring with access to the rear gardens. To the first floor there are four double bedrooms with the master benefitting from an ensuite shower room and all the others having built in wardrobes. The family bathroom has an electric shower over the bath, pedestal sink, WC and heated towel rail. Outside to the rear is a flagstone terrace and seating area, perfect for alfresco dining as well a lawned area. To the front is a private driveway, suitable for multiple vehicles.



Woodland Way Failand BS8 3UD

Approx. Gross Internal Area
1338.0 Sq.Ft - 124.30 Sq.M



Tenure
Freehold

EPC Rating
E

Council Tax Band
E

Services Oil, mains electric and water

For illustrative purposes only. Not to scale.
Whilst every attempt has been made to ensure accuracy of the floor plan all measurements are approximate and no responsibility is taken for any error, omission or measurement.

Clifton : 01179 744 766
Long Ashton : 01275 393 956
Southville : 01174 523 700

