



Hermitage Lane, NW2

£1,425,000

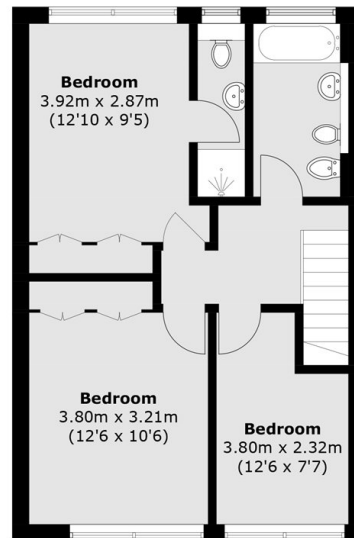
Freehold property of approximately 1,750 sq ft, arranged over three floors. Offering 4/5 double bedrooms, a 29ft reception room and versatile living space throughout. Further benefits include a private garden, off-street parking and a garage at the end of the garden. The property has the potential to be extended at the rear and into the loft, STPP.

Located close to Hampstead Village, and the green open spaces of Hampstead Heath and Golders Hill Park are just a short distance away.

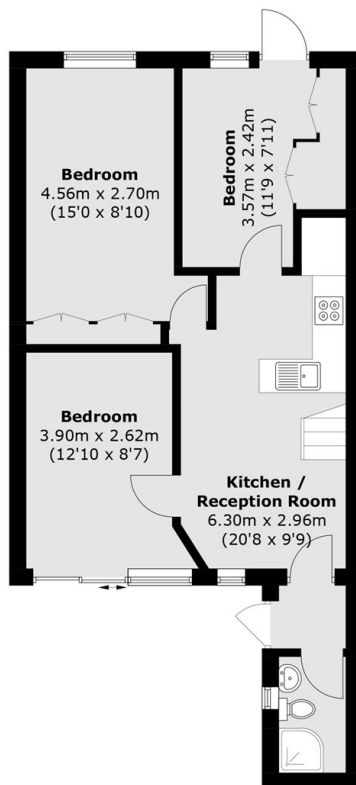
Features

- Freehold
- 4/5 Bedrooms
- Off Street Parking
- Private Garden
- Garage
- Chain Free

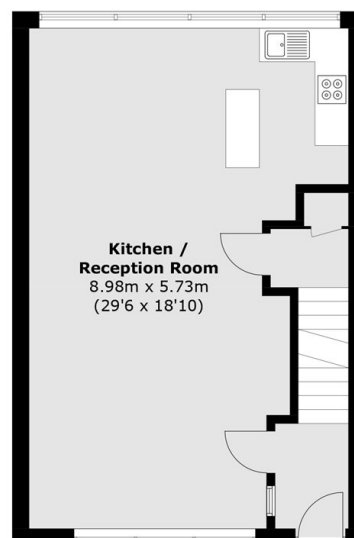
Hermitage Lane, London, NW2



First Floor



Lower Ground Floor



Ground Floor

Total area (approx.): 159.4 sq. m (1,715.7 sq. ft)