



Guide Price
£350,000

Freehold

3x  1x  1x 

**Stubs Hill, Dorking,
Surrey, RH4**

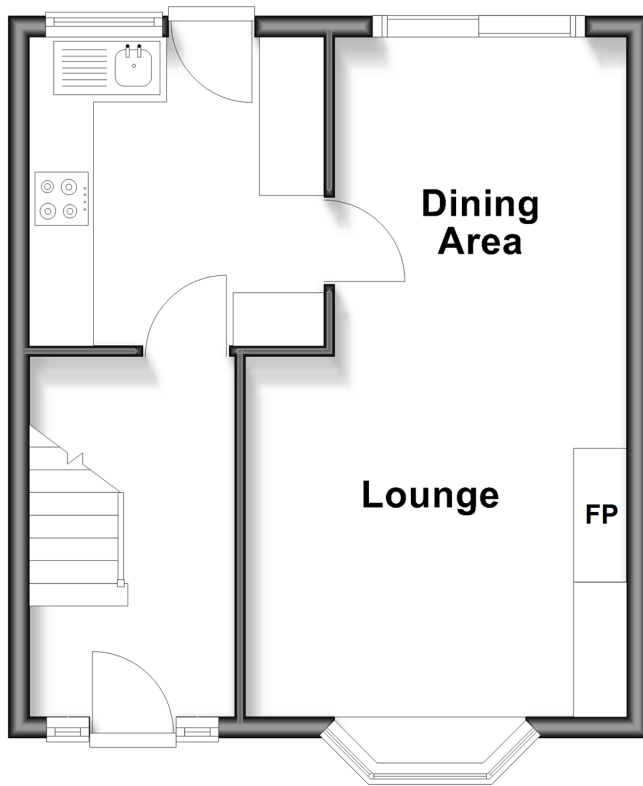
OVER 60?

Secure this property
for up to **59% less!**

cubitt & west
Helping you move forwards

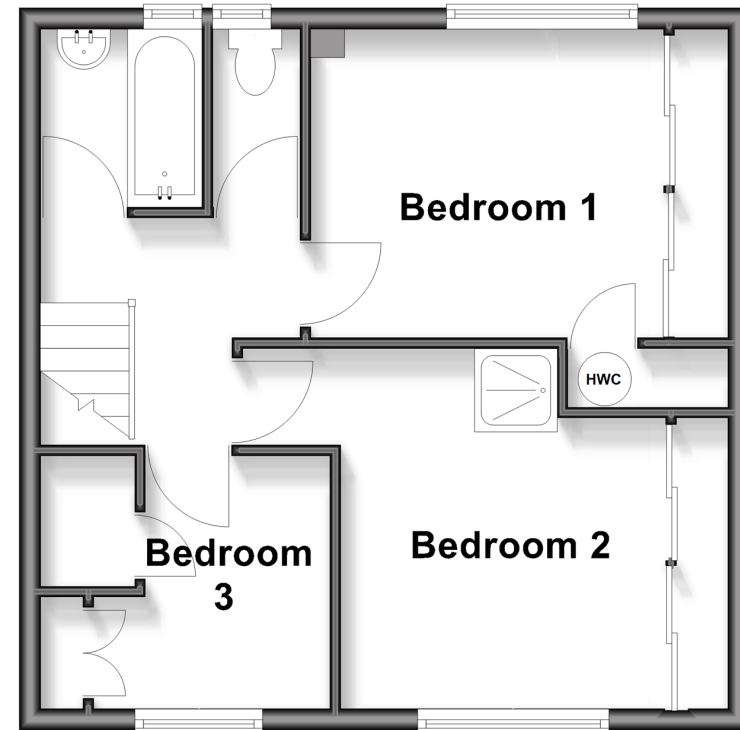
Ground Floor

Approx. 36.1 sq. metres (388.7 sq. feet)



First Floor

Approx. 41.1 sq. metres (442.3 sq. feet)



Accommodation

GROUND FLOOR

Entrance Hall

Lounge/Dining Area: 20'11 x 12'0 (6.38m x 3.66m)

Kitchen: 10'0 x 9'0 (3.05m x 2.75m)

FIRST FLOOR

Landing

Bedroom 1: 10'10 x 9'0 (3.30m x 2.75m)

Bedroom 2: 11'0 x 10'0 (3.36m x 3.05m)

Shower Cubical

Bedroom 3: 7'0 max x 7'0 max (2.14m x 2.14m)

Bathroom

Separate Toilet

OUTSIDE

Rear Garden

Driveway

Brick Built Sheds



Main features

- Side access to a low-maintenance garden with brick-built sheds
- Potential to extend (subject to planning permission)
- Move-in ready with scope to personalise and add your own style
- Driveway for two cars
- Convenient bus routes to both Dorking and Horsham

Nearest Schools

Primary Schools: St John's CE Community Primary 0.3 miles, St Paul's CofE (Aided) Primary 1.3 miles, St Joseph's Catholic Primary 1.4 miles
Secondary Schools: The Priory CofE Voluntary Aided School 1.5 miles, The Ashcombe School 2.8 miles

Transport Information

Train Stations: Dorking West 1.9 miles, Dorking Deepdene 2.4 miles, Dorking 2.6 miles

Address

Stubs Hill, Dorking, Surrey, RH4

Directions

For directions to this property please contact us.



cubitt&west
Helping you move forwards

Call Dorking Branch 01306 883399 ■ cubittandwest.co.uk



■ If buying to rent, please check if Local Authority licensing schemes apply before proceeding

■ Through a Homewise Home For Life Plan people aged 60+ can secure this property for up to 59% less, by purchasing a Lifetime Lease



20511786/20260608/LP/LP