



Geoffrey Road, SE4

£1,299,995

A unique opportunity to obtain a link-detached, four bedroom, two bathroom family home in central Brockley. This 'back to brick' full refurbishment of a Victorian family home. Includes a full re-wire, re-plumb, re-plaster and the installation of stunning wooden sash windows.

On the ground floor, you have a study space and a front reception room, to the rear you have a reception/dining space as well as the kitchen diner to the door with bi-folding patio doors to the garden.

For the busy commuter Brockley Overground is a couple of hundred metres away and for those thinking of schools, the choice nearby is both Good & Outstanding - Ofsted.

Features

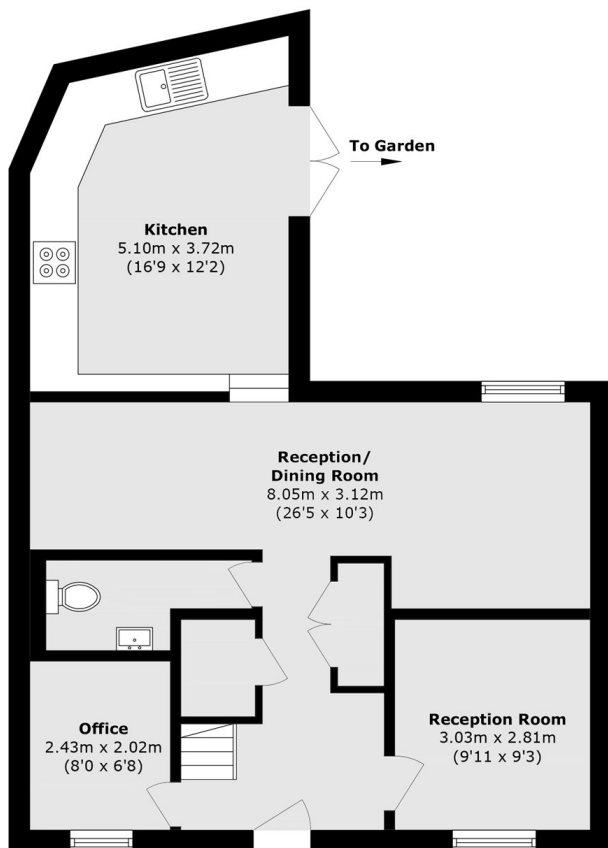
- Link-Detached Family Home
- Four Bedrooms
- Three Reception Rooms
- Two Bathrooms
- Wooden Sash Windows
- Back To Brick Refurbishment



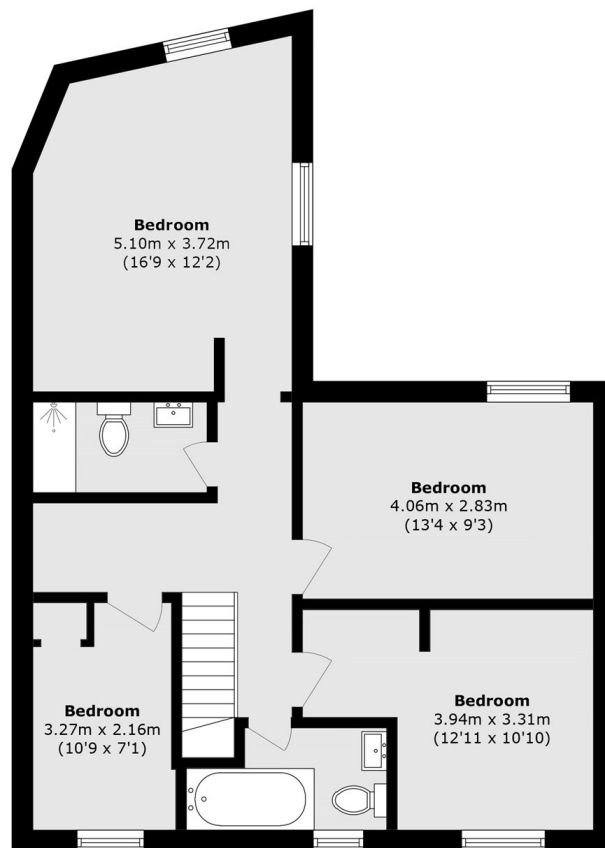
Geoffrey Road, SE4



Geoffrey Road, London, SE4



Ground Floor



First Floor

Total area (approx.): 134.6 sq. m (1448.8 sq. ft)