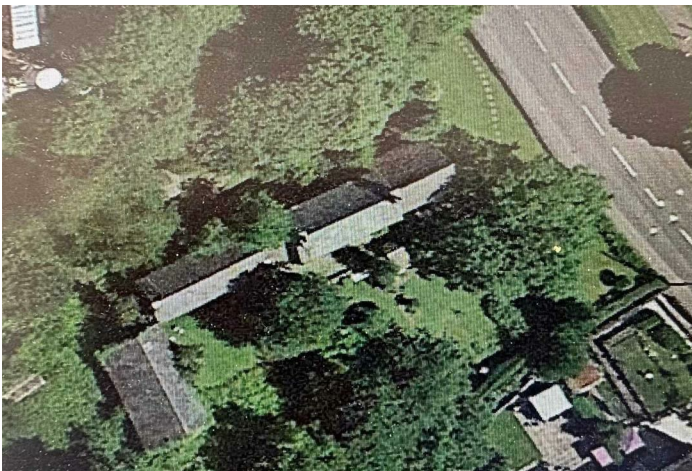


FREEHOLD



House - Detached (EPC Rating: G)

**I-2 TYN Y BRYN FARM, TONYREFAIL,
RHONDDA CYNON TAFF, CF39 8EB**
Offers Over

£380,000



4



0



3



G

4 Bedroom House - Detached located in Tonyrefail

Osborne Estates offer to the market this very rare opportunity to acquire this grade 2 listed substantial property set within its own grounds in Tonyrefail , (Text taken from Cadw at time of listing) A mid C17 one-unit hall, with new house added against the upper gable in the C19. The original entrance into the hall was next to the fireplace in the W wall (now inside), and a new external entrance cut into the S wall. The house was formerly known as Waun Rhydd.

Exterior

The C17 unit of one-and-a-half storeys is constructed of whitened rubble stone, with stone tiles to the N roof pitch and slates to the S pitch. Late C20 wooden door to L under a segmental stone head, immediately above which is a small 2-light casement window with stone sill. The E gable end is rendered. In the centre is a 2-light multi-pane casement window. Above and lighting the loft is a small window with shaped hoodmould containing uPVC glazing. To the rear is a 2-light multi-pane casement window offset to the R under a shaped hoodmould.

The C19 range is 2-window and 2-storey, symmetrical with central entrance. It is constructed of rubble stone under a slate roof with rendered end stacks. All the openings are under segmental heads of narrow stone voussiors. Late C20 planked door under gabled porch canopy with flanking multi-pane cross-windows. The upper storey cross-windows have plain glazing. To the rear is a single small window under a segmental head, to the R of the lower storey.

Google earth image taken 2018

Image taken from old aerial photograph date not kn

Image 3

Image 4

Image 5

Image 6

Image 7

Image 8

Image 9

Image 10

Image 11

Image 12

Image 13

Image 14

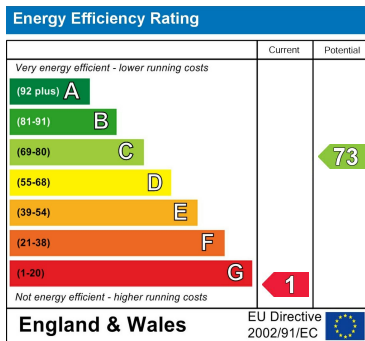


TONYPANDY | 97A DUNRAVEN STREET, TONYPANDY, CF40 1AR

Council Tax Band

B

Energy Performance Graph



Call us on

01443 435599

sales@osborneestates.co.uk

osborneestates.co.uk

Agents Note: Whilst every care has been taken to prepare these particulars, they are for guidance purposes only. All measurements are approximate and are for general guidance purposes only and whilst every care has been taken to ensure their accuracy, they should not be relied upon and potential buyers are advised to recheck the measurements.

