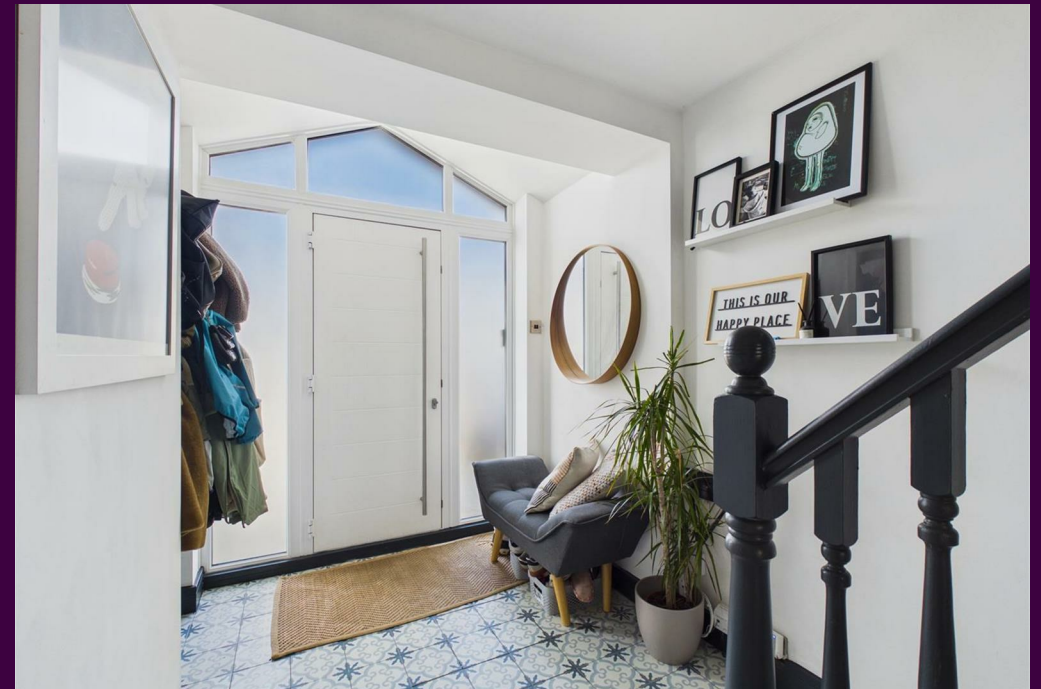
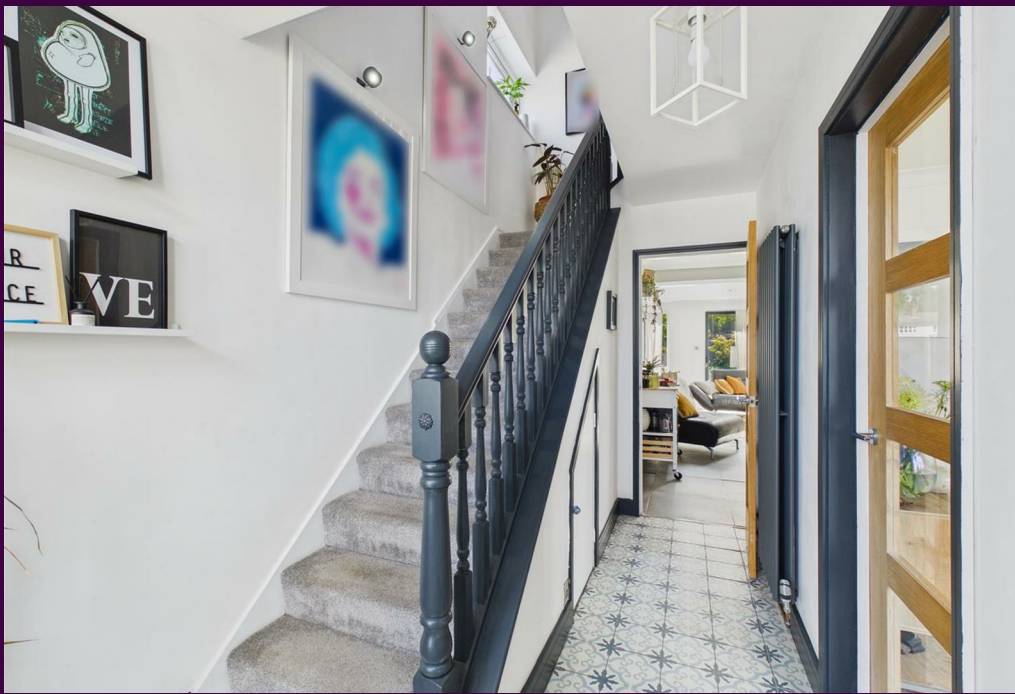


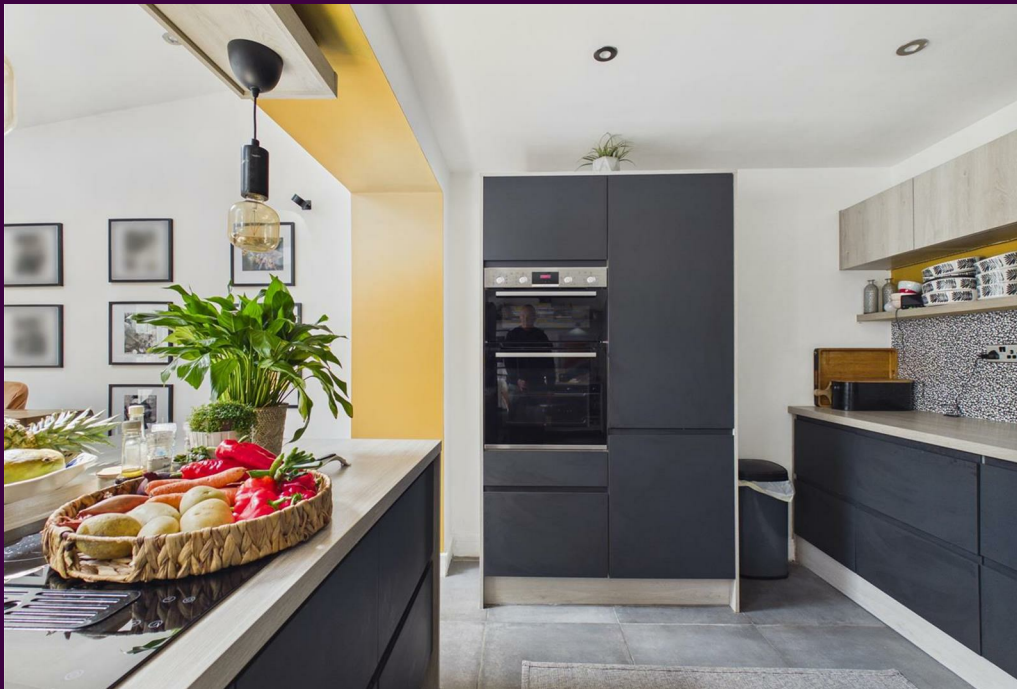
Kirklevington Grange,



£285,000

**IH** INGLEBY HOMES





## OPEN TO SENSIBLE OFFERS

Bursting with style and quality, there is so much more to this impressive home that you might first assume from the front.

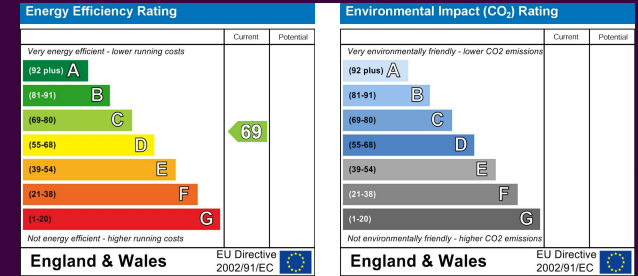
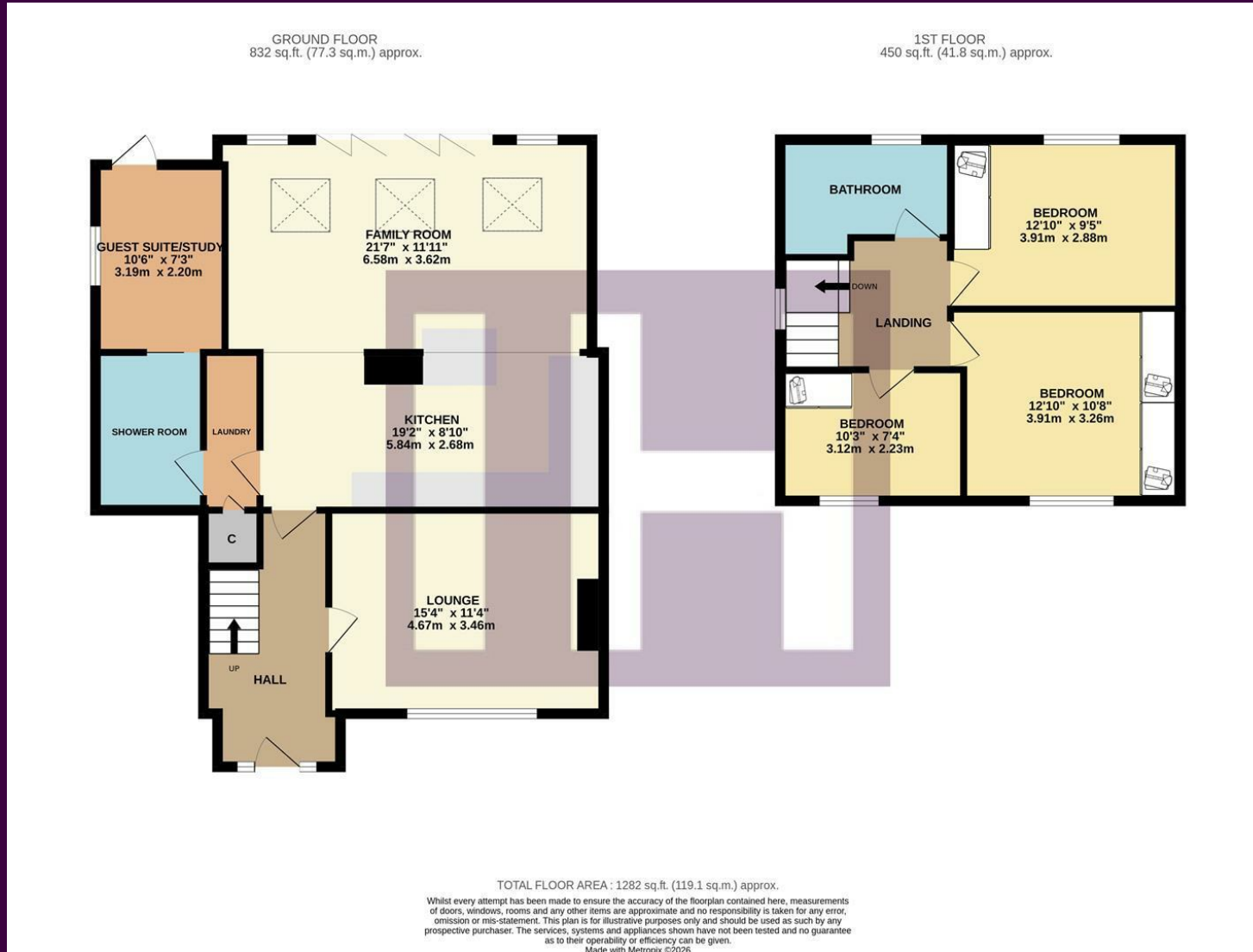
A large rear extension and side development has helped deliver a stunning, open-plan kitchen/dining/family space which boasts a stunning 'Vaulted' ceiling, bi-fold doors, and wood-burner, whilst the sleek refitted kitchen delivers a range of integrated appliances, boiling water tap and extensive range of quality cabinets, professionally designed and fitted. The side alterations bring a modern shower room, which you find passing the useful laundry space, and leading to flexible 'Guest Suite' - which could easily be the ideal office, or snug.

The generous ground floor also brings an extended feature entrance hall, and independent lounge with feature 'Media' wall and front facing bi-fold doors that enjoy the attractive outlook.

The first floor brings three good bedrooms, all of which incorporate robes storage, and the separate 'four-piece' suite family bathroom is brought to a modern standard.

The generous rear garden is fully enclosed, laid mainly to an established lawn, with paved seating area, and slate chip areas.

# The Layout



# The Location

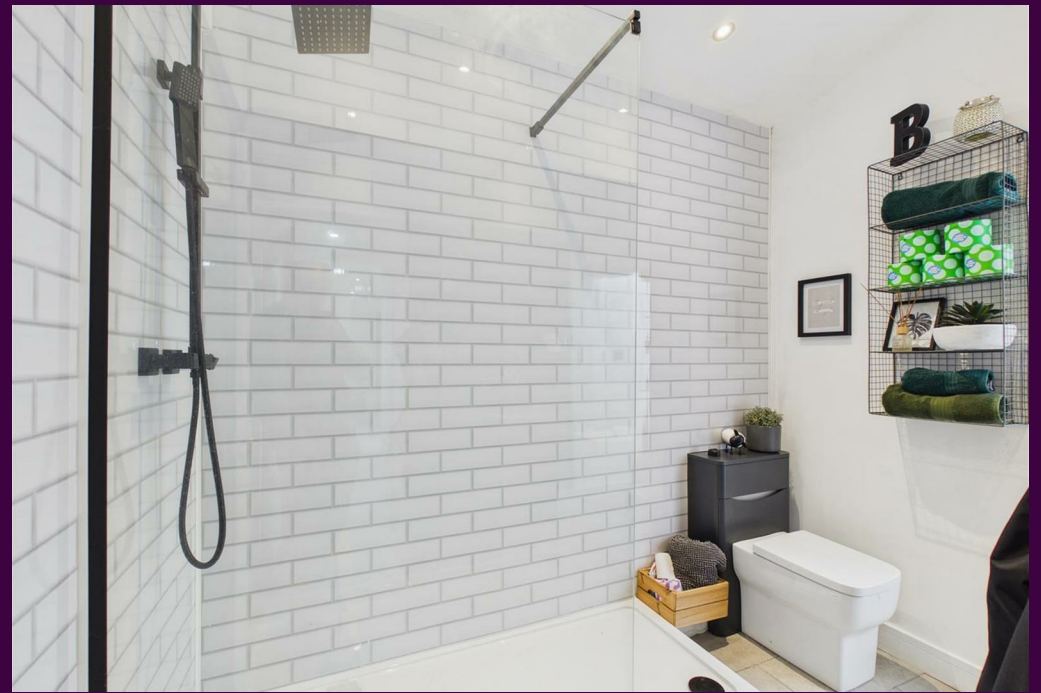


Council Tax Band:  
Tenure:

**C**  
Freehold



- Stylish throughout, and significantly extended
- Stunning open-plan kitchen/dining/family living space
- Additional ground floor 'Guest Suite' with shower room adjoining
- Generous rear gardens, off-road parking and pleasant open outlook
- Desirable Kirklevington location
- Ideal for easy Yarm access



[www.ingleby-homes.co.uk](http://www.ingleby-homes.co.uk)  
01642 671025