



Park Road, NW1

£3,300 Per calendar month

This well-presented two bedroom apartment is on the third floor of an attractive period building, with lift, just moments from Regent's Park. The property has an open-plan kitchen/reception, two bedrooms, bathroom and guest WC.

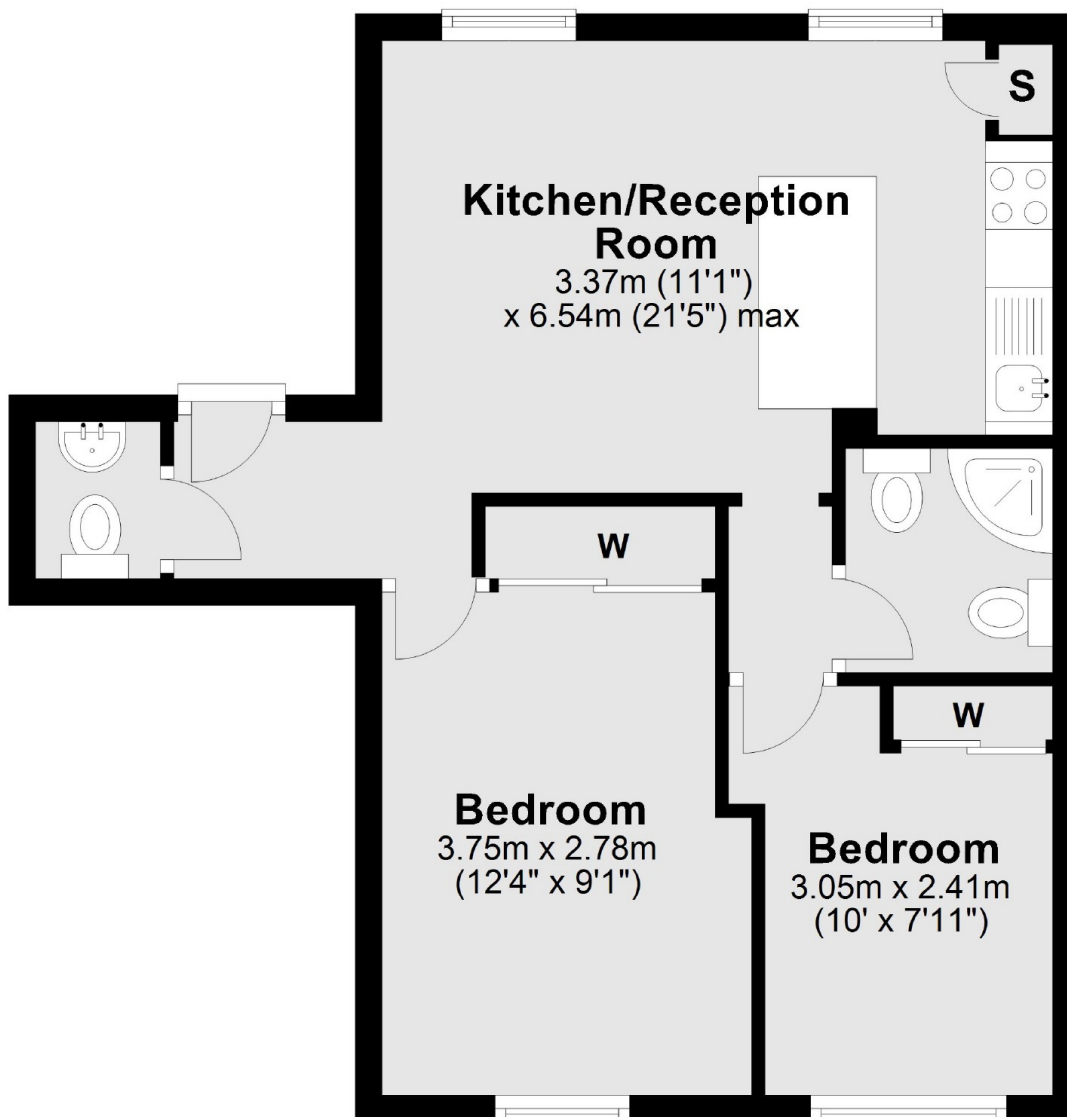
The property is moments from the open spaces of Regent's Park as well as Baker Street station. The shops, bars and restaurants of Marylebone are close by.

Features

- Third Floor With Lift
- Two Bedrooms
- One Bathroom
- Guest WC
- Wood Flooring
- Close To Regent's Park

**Park Road,
London, NW1**

Third Floor



Total area: approx. 42.3 sq. metres (455.8 sq. feet)