

Highgate Hill, N19

£300,000

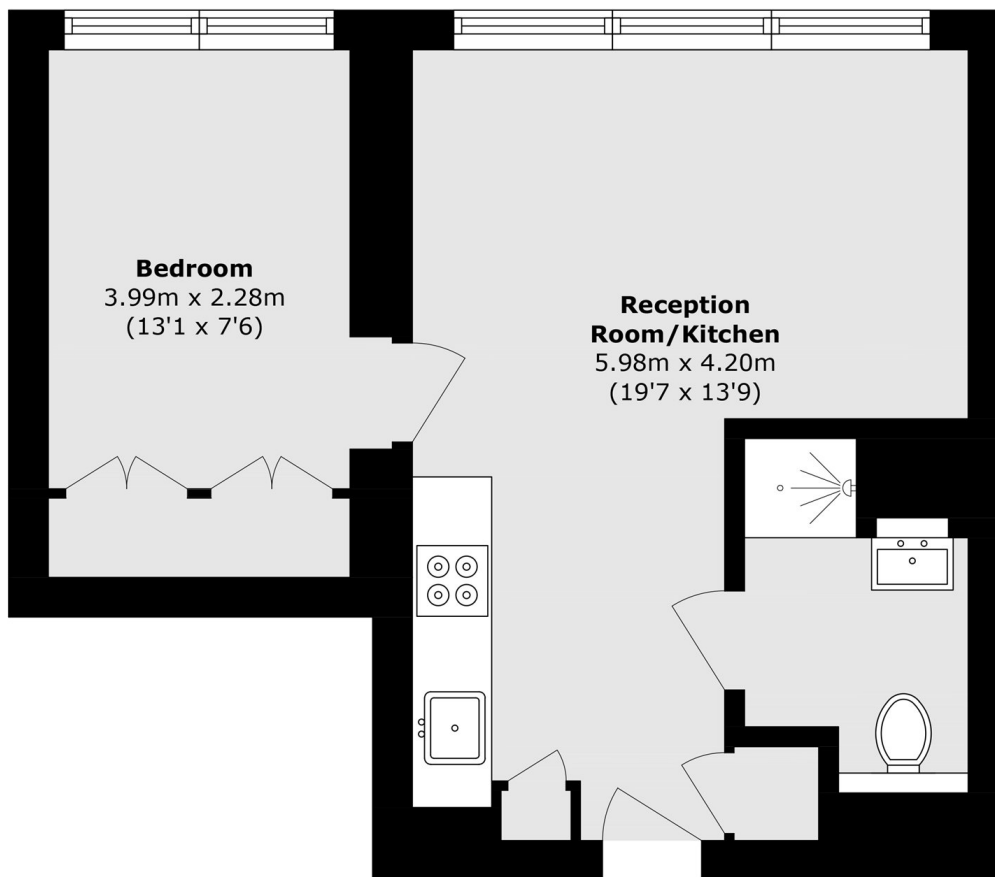
A well-presented one bedroom apartment in a development designed by award-winning architects at Hawkins Brown. Exclusive residents amenities include a communal roof terrace, working spaces and concierge.

The property is superbly located moments from Archway underground station (Northern line), Upper Holloway overground station and 24-hour bus routes. Hampstead Heath and Waterlow Park are also nearby.

Features

- One Double Bedroom
- Open Plan
- Chain Free
- Communal Work Space
- Communal Roof Terrace
- Bike Storage

Highgate Hill, London, N19



Total area (approx.): 36.0 sq. m (387.5 sq. ft)