



# Messina Avenue

West Hampstead, NW6

£2,000 per month  
(£461.54 per week)

1st floor apartment set in this terraced Victorian house with wood floors and communal roof terrace. The property is situated in West Hampstead, within walking distance West Hampstead (Jubilee Line), Thameslink and Silverlink Stations. Accommodation comprises bright and spacious reception, open plan fully fitted kitchen, double bedroom, shower room.



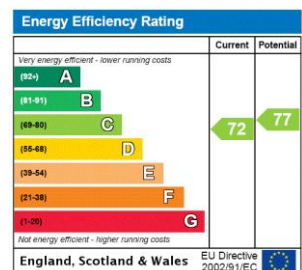
# Messina Avenue

## West Hampstead, NW6

- 1st Floor Apartment
- 1 Bedroom, 1 Bathroom, Reception, Fully Fitted Kitchen
- Communal Roof Terrace, Wood Floors
- Situated in West Hampstead, Within Walking Distance West Hampstead (Jubilee Line), Thameslink and Silverlink Stations



**Deposit Required:** £2,307.69  
**Local Authority:** London Borough Of Camden  
**Council Tax Band:** C  
**EPC Rating:** C  
**Furnished**



### *Chestertons Hampstead Lettings*

55-56 Hampstead High Street  
Hampstead  
London  
NW3 1QH  
hampsteadlettingsusers@chestertons.co.uk  
02077941125  
chestertons.co.uk

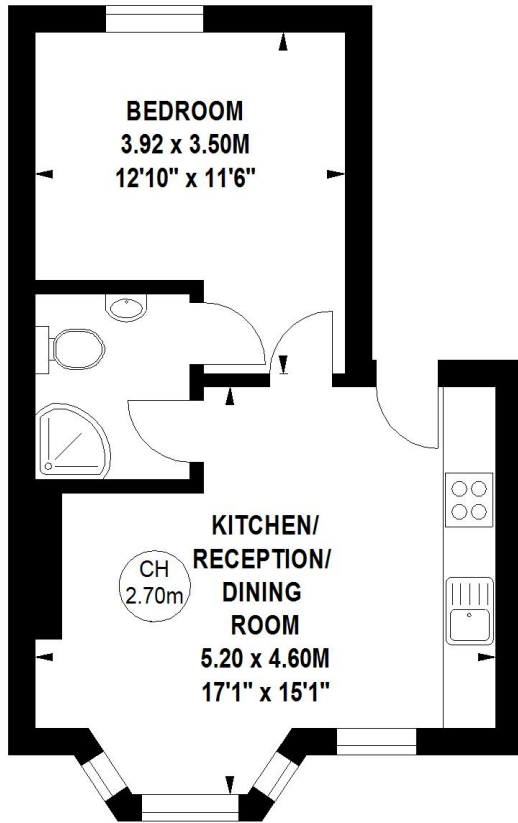
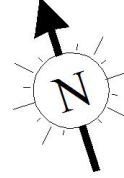
Additional tenant charges apply (fees apply to non-AST tenancies only)  
Tenancy Agreement Fee: £300  
References per Tenant/Guarantor: £60  
Inventory check (approx. £100 – £250 inc. VAT)  
chestertons.co.uk/property-to-rent/applicable-fees

# Messina Avenue, NW6

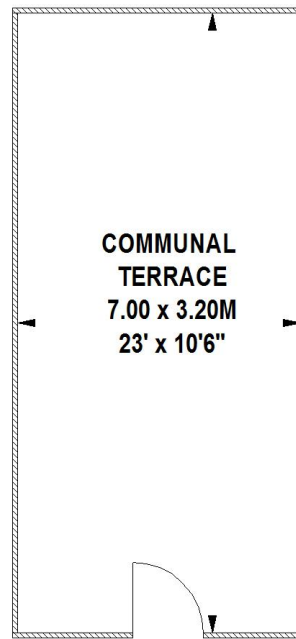
Approximate gross internal area

**35.40 sq m / 381 sq ft**

Key :  
CH - Ceiling Height



**Second Floor**



**Third Floor**

The floor plan is not to scale and measurements and areas shown are approximate and therefore should be used for illustrative purposes only. The plan has been prepared in accordance with the RICS code of Measuring Practice and whilst we have confidence in the information produced, it must not be relied on.

If there is any aspect of particular importance, you should carry out or commission your own inspection of the property.

Copyright of FeaturePRO.

