



SINTON  
ANDREWS

SINTON  
ANDREWS

£425,000 Leasehold

TRAFALGAR HOUSE, DICKENS YARD, LONGFIELD AVENUE, W5 2TJ





**AN ATTRACTIVE ONE-BEDROOM 2ND FLOOR APARTMENT WITH PRIVATE BALCONY ENJOYING VIEWS ACROSS LANDSCAPED GARDENS**

This stunning apartment forms part of the prestigious Dickens Yard development in the heart of Ealing Broadway. Conveniently placed for local shops, restaurants, bars and cafes. Just a short stroll to Ealing Broadway Station enjoying the benefits of Central, District and Elizabeth Line connections.

The accommodation offers modern living for modern lifestyles and comprises: Spacious open plan living room and kitchen zone with private balcony enjoying a southerly aspect and views across landscaped gardens. Double bedroom. Modern bathroom. In built storage and utility area. Benefiting from electric heating and double glazing throughout. Automatic lift and secure entrance. No forward chain.

**Service Charge:** £348.23 pcm

**Lease:** 125 Years from 7<sup>th</sup> August 2017

**COUNCIL TAX BAND: D**

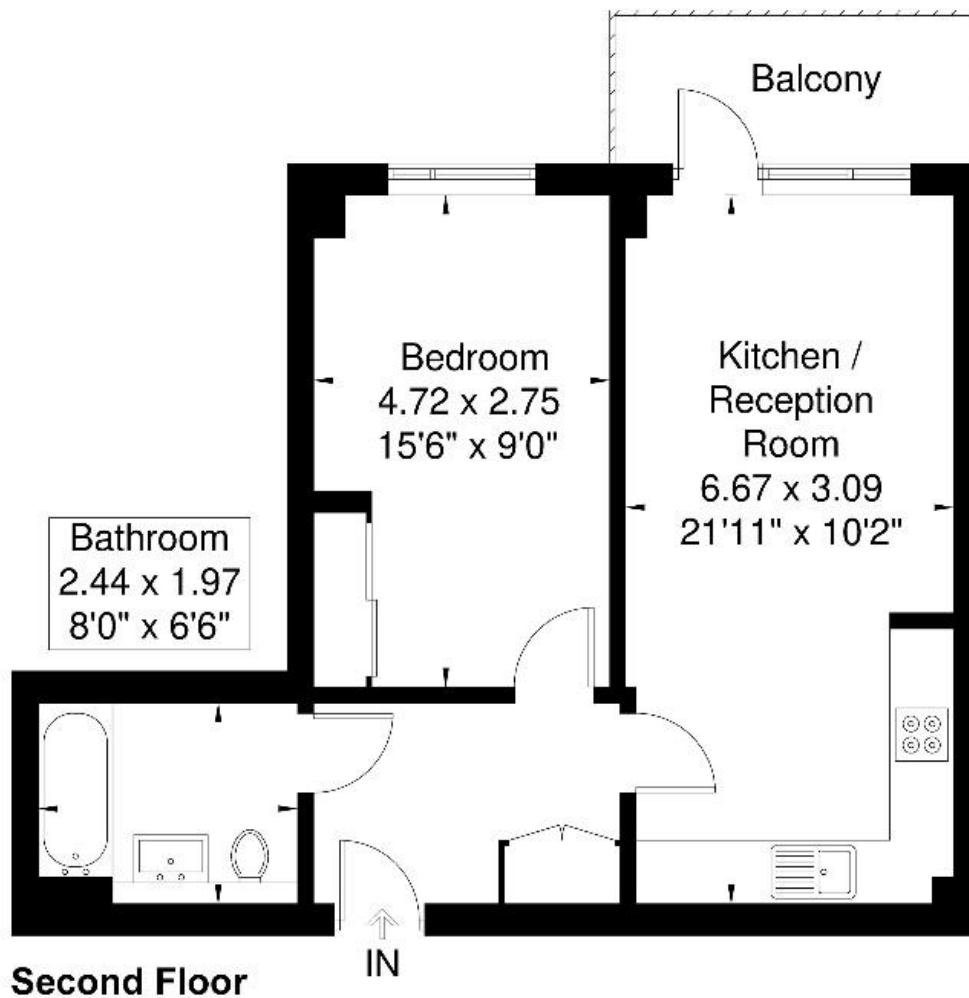
**EPC Rating: B**



[www.sintonandrews.com](http://www.sintonandrews.com)  
020 8566 1990

# Trafalgar House

Approximate Gross Internal Area = 46.1 sq m / 496 sq ft



Although every attempt has been made to ensure accuracy, all measurements are approximate. The floorplan is for illustrative purposes only and not to scale.

© www.perspective.co.uk

020 8566 1990

8 Spring Bridge Road, Ealing, London W5 2AA

SINTONANDREWS.COM

