



# BEAUFORT GREEN



# Philbeach Gardens, SW5

£4,250 Per month



This beautifully refurbished two-bedroom apartment offers stylish, turnkey living in one of West London's most desirable garden squares. Located on the third floor, it features a brand new kitchen, modern bathrooms, air conditioning, double glazing, and parquet flooring throughout.

The property benefits from excellent natural light and a generous 600 sq ft private terrace with far-reaching London views, ideal for entertaining. Both bedrooms are well-sized, with additional underfloor storage in the second, and a smart layout that maximises space.

Set within a charming red brick mansion block on Philbeach Gardens, the apartment is moments from Brompton Cemetery and close to the shops, cafés, and amenities of Fulham Road and Earl's Court. King's Road and Kensington are also within easy reach. Earl's Court Underground Station (Circle, District, and Piccadilly lines) is approximately 0.2 miles away.



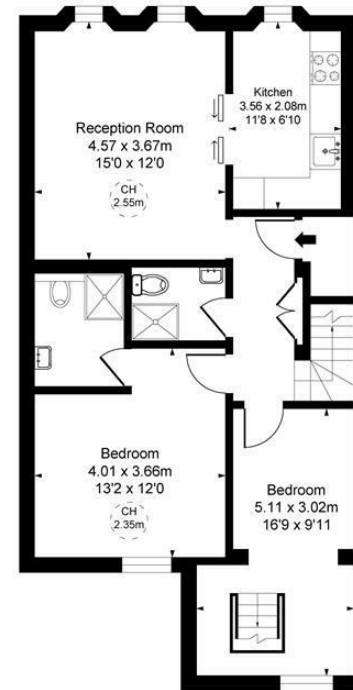


# BEAUFORT GREEN

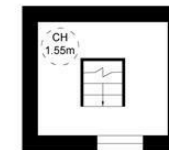


# BEAUFORT GREEN

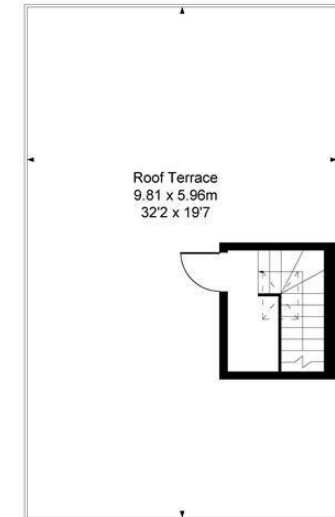
Philbeach Gardens, SW5  
Approximate Gross Internal Area  
78.35 sq m / 843 sq ft  
(CH = Ceiling Heights)



Third Floor



Third Floor  
Half Landing



Fourth Floor

## At a Glance.

- Newly Refurbished Apartment
- 600qft Terrace w/ 360 Degree Skyline Views
- Aircon
- Two Double Bedrooms
- Two Bathrooms

This floor plan is provided for illustrative purposes only and has been prepared in accordance with the RICS Code of Measuring Practice. It is not to scale, and all measurements and areas are approximate and should not be relied upon for accuracy. The plan should not be used for valuation or other decision-making purposes. Whilst every effort has been made to ensure accuracy, no responsibility is accepted for any errors or omissions.

# BEAUFORT GREEN

02074594100

[charlie@beaufortgreen.co.uk](mailto:charlie@beaufortgreen.co.uk)

---

263 New Kings Road  
London  
SW16 1DB