



## Temple Fortune Lane, NW11

### £1,350,000

A well presented four bedroom end-of-terrace family home with a south-facing rear garden.

Ideally situated only 0.7 miles from Golders Green Underground station and within close reach of the diverse shops, cafés, and restaurants in Temple Fortune and Golders Green.

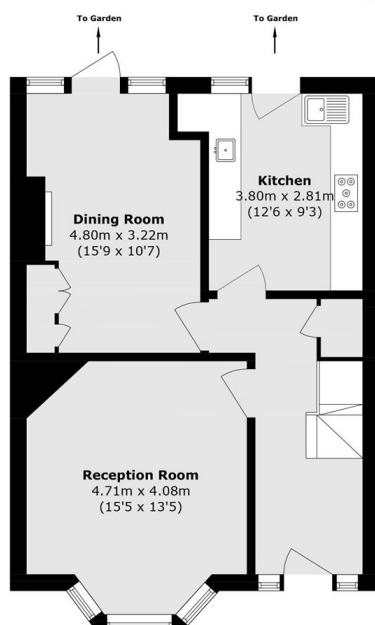
### Features

- South Facing Garden
- Sought After Road
- Excellent Condition
- 4 Bedrooms
- 2 Bathrooms
- Extended

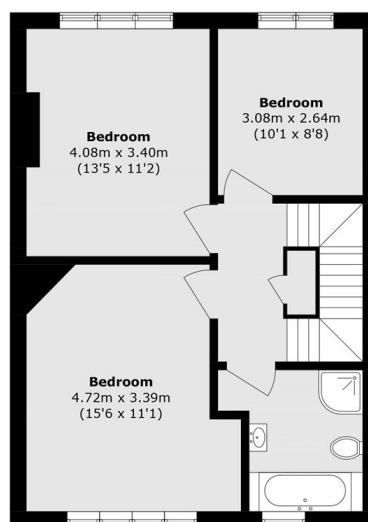
# Temple Fortune Lane, London, NW11



**Second Floor**



**Ground Floor**



**First Floor**

Total area (approx.): 154.4 sq. m (1661.9 sq. ft)