

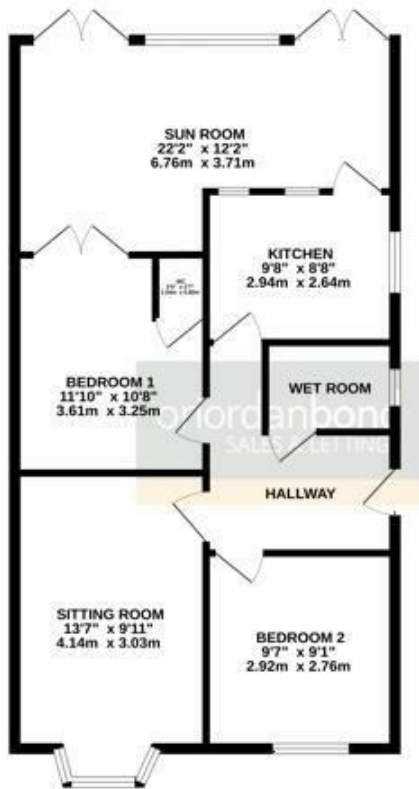


**Station Road**

**oriordanbond**  
SALES & LETTINGS



GROUND FLOOR  
703 sq.ft. (70.9 sq.m.) approx.



TOTAL FLOOR AREA : 703 sq.ft. (70.9 sq.m.) approx.

While every attempt has been made to ensure the accuracy of the floorplan contained here, measurements of these, windows, doors and any other details are approximate and no responsibility is taken for any error, omission or misstatement. This plan is for illustrative purposes only and should be used as such by any prospective purchaser. The services, systems and appliances shown here are not intended and no guarantee as to their operability or efficiency can be given.  
Made and adapted 1/2020

## Station Road

NN6 0NT

PRICE £290,000

### Additional information

- Council Tax Band: B
- Energy Efficiency Rating: D

### Viewing

Viewing strictly by appointment – details below

### Disclaimer

O'Riordan Bond Estate Agents Limited has not tested apparatus, equipment, fittings or services and so cannot verify they are in working order. The buyer is advised to obtain verification from their solicitor or surveyor.

O'Riordan Bond Earls Barton Sales  
01604 810088

earlsbarton@oriordanbond.co.uk

