



DRAGMORE STREET, SW4

£2,600 per month

A beautiful two bedroom, upper floor flat (with a lift) in this popular modern development.

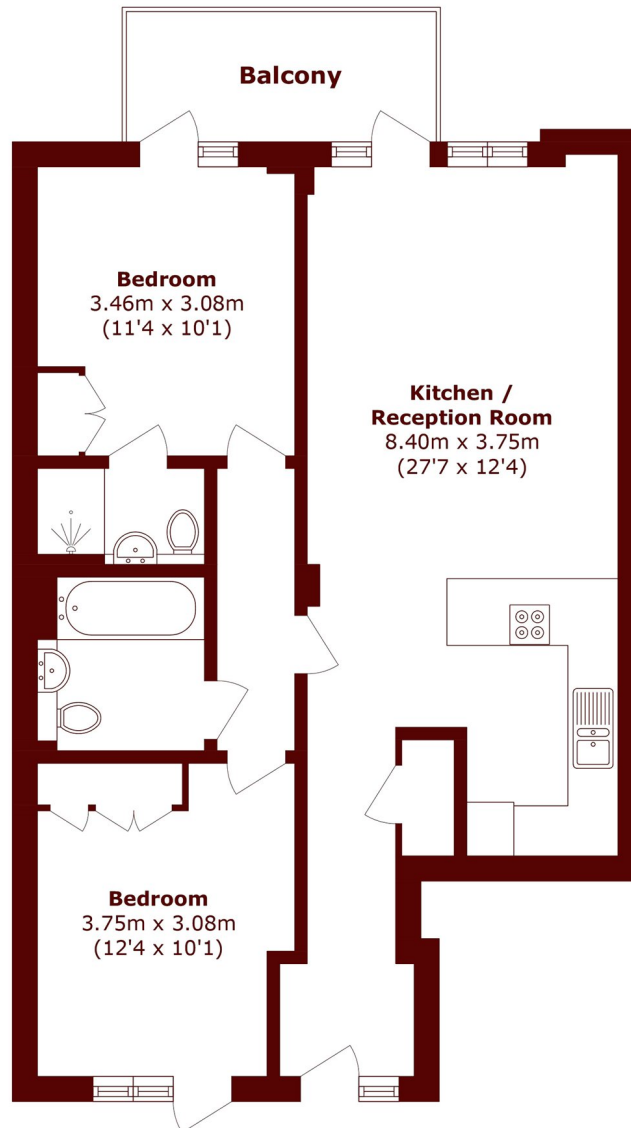
Two bedrooms
Two bathrooms
New build

Balcony
Spacious
Energy rating: c

@marshandparsons
marshandparsons.co.uk

MARSH &
PARSONS

STEP INSIDE DRAGMORE STREET



Total area (approx.): 69.0 sq. m (742.7 sq. ft)

Balcony area (approx.): 6.1 sq. m (65.6 sq. ft)

Balham & Clapham South
020 8772 9200

Energy Rating: We aim to make our particulars both accurate and reliable. However, they are not guaranteed; nor do they form part of an offer or contract. If you require clarification on any points then please contact us, especially if you're traveling some distance to view. Please note that appliances and heating systems have not been tested and therefore no warranties can be given as to their good working order

**MARSH &
PARSONS**