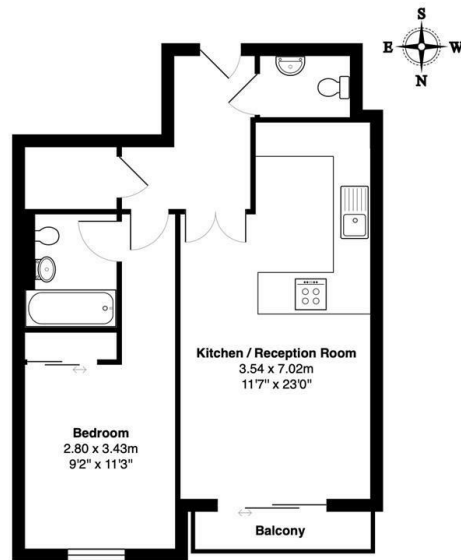




41 Millharbour, London, E14

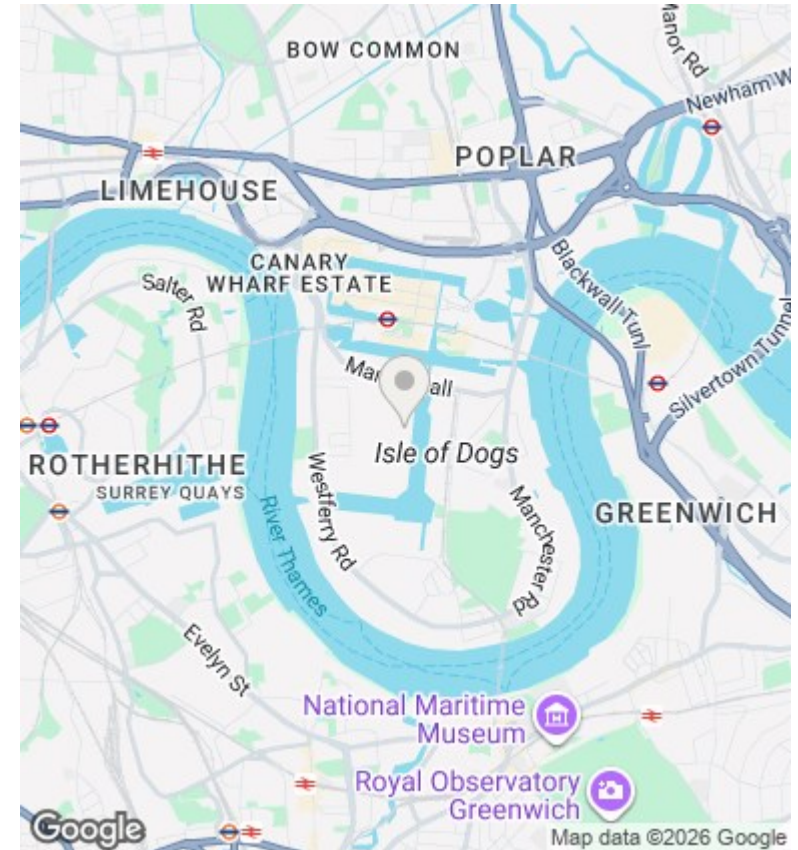
£2,200 Per month

- One Double Bedroom
- Furnished
- Heating and Hot water included
- Day Porter



7th Floor

Total Area: 50.6 m² ... 544 ft² (excluding balcony)
 All measurements are approximate and for display purposes only



Directions

Viewings

Viewings by arrangement only. Call 0208 075 4927 to make an appointment.

Council Tax Band

D

EPC Rating:

B

Energy Efficiency Rating		Current	Potential
<i>Very energy efficient - lower running costs</i>			
(92 plus) A			
(81-91) B		83	
(69-80) C			
(55-68) D			
(39-54) E			
(21-38) F			
(1-20) G			
<i>Not energy efficient - higher running costs</i>			
England & Wales		EU Directive 2002/91/EC	