



Peter  
Buswell  
Independent Family Estate Agents



# A Spacious Family Home in Burwash

Guide Price £1,000,000

🛏 5 🍳 2 🛋 3





## Description

*Guide Price £1,000,000 to £1,100,000* - Set within just over half an acre, this impressive five-bedroom detached family home sits in a highly sought-after lane in the village of Burwash. The property is beautifully presented throughout, offering bright, spacious and flexible accommodation with stunning countryside views.

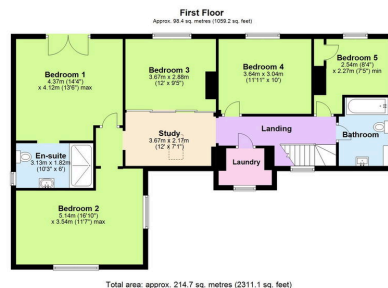
The ground floor features a welcoming entrance hall, a generous kitchen/breakfast room with adjoining utility space, and multiple reception rooms including a living room, dining room and study.

Upstairs, there are five well-proportioned bedrooms, including a principal bedroom with en-suite, along with a family bathroom and additional utility/storage space. Many of the bedrooms enjoy stunning views over the surrounding fields.

Outside, the property is approached via a five-bar gate leading to a driveway and garage with parking for several vehicles. The established gardens are a standout feature, offering multiple decked seating areas, expansive lawns, and far-reaching countryside views. A swimming pool with a pool house sits within the grounds, creating a perfect space for relaxation and social gatherings.

Located in the popular village of Burwash, the home enjoys easy access to local shops, pubs and schools, as well as excellent transport links via Etchingham mainline station and the A21. This is a rare opportunity to acquire a substantial family home in an exceptional rural setting.





- GUIDE PRICE £1,000,000 TO £1,100,000
- SET ON JUST OVER HALF AN ACRE
- GARAGE AND DRIVEWAY WITH PARKING FOR SEVERAL VEHICLES
- COUNTRYSIDE VIEWS TO THE REAR
- EPC RATING C
- FIVE BEDROOM DETACHED FAMILY HOME
- IMMACULATLY PRESENTED THROUGHOUT
- SWIMMING POOL & POOL HOUSE
- CLOSE PROXIMITY TO BURWASH VILLAGE
- COUNCIL TAX BAND F

