



Crescent Road | BILLERICAY | CM12 0JQ

£2,300 Per Calendar Month

ICON
RESIDENTIAL

Crescent Road |
BILLERICAY | CM12 0JQ
£2,300 Per Calendar Month

- 3 spacious bedrooms
- 2 modern bathrooms
- Detached bungalow
- Located on Crescent Road
- 1 cosy reception room
- Modern property design
- 592 sq ft living space
- Close to local amenities
- Easy access to transport
- Viewing highly recommended

Nestled on the charming Crescent Road, this modern detached bungalow offers a delightful living experience. With a well-designed layout, the property boasts one spacious reception room, perfect for relaxation or entertaining guests. The bungalow features three comfortable bedrooms, providing ample space for families or individuals



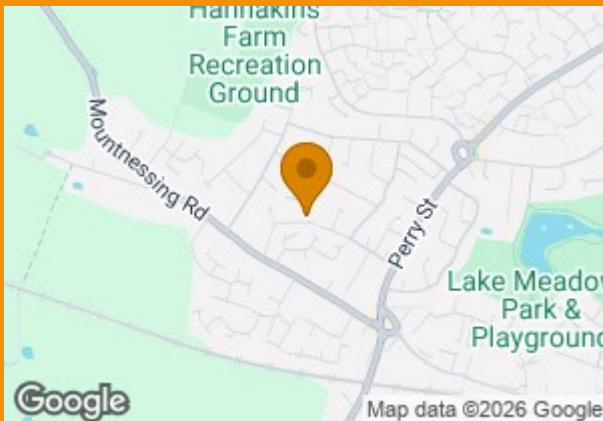


seeking extra room for guests or a home office.

The two bathrooms ensure convenience for all occupants, making morning routines a breeze. Spanning 592 square feet, this property is both cosy and functional, ideal for those who appreciate a low-maintenance lifestyle.

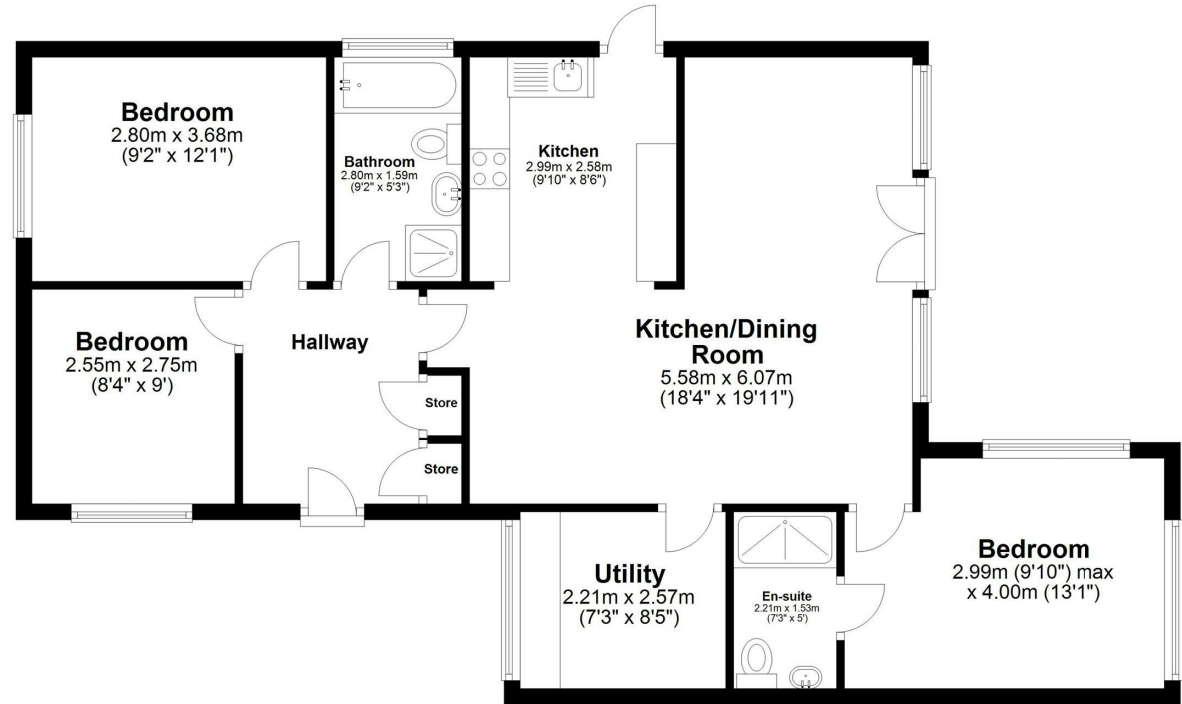
One of the standout features of this bungalow is the generous parking available at the front of the property.

This rental property is perfect for those looking for a modern home in a peaceful setting, while still being close to local amenities. Don't miss the opportunity to make this lovely bungalow your new home.



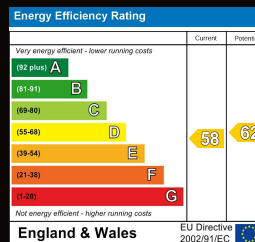
Ground Floor

Approx. 81.7 sq. metres (879.8 sq. feet)



Total area: approx. 81.7 sq. metres (879.8 sq. feet)

Crescent Road



Hallmark House
25 Downham Road
CM11 1PU
BILLERICAY
Essex
CM11 1PU
01268545809

steven.hartman@icon-residential.co.uk